

# **Environment Co-ordination Department Report**

## **Geoff Skene, Manager**

**June 2002**

### **1. Pauatahanui Inlet Community Trust (Tim Porteous)**

The Community Trust for the Pauatahanui Inlet was launched on May 1<sup>st</sup>. and held its first meeting on June 10<sup>th</sup>. The trust will enable the community around the inlet to play an on-going role in decision making about the area and set priorities for the work needing to be done there. We hope that the Trust will become the “engine” for those activities directed at the Inlet’s rejuvenation, setting the agenda and driving the work programme forward from this point.

It is an appropriate time to recognise the immense contribution to the process of improving the management of the Inlet and its catchment made by the Pauatahanui Inlet Action Group. The Action Group, which drew up the Action Plan and which has done so much to put it into practice, as well as creating the community trust, goes out of existence with the formation of the Trust. The members of the group will continue to play a role on the Trust.

Work continues on the Communications Strategy for the Inlet and on the development of a series of attractive and consistent signs highlighting the various values and regulations relating to the area. While these have been designed, they have not yet been printed and constructed, to take into account the Council’s brand review.

A contract has been let for a restoration plan for the public lands around the Inlet. The successful tenderers are Clive Anstey and Paul Blaschke. Nigel has been assisting them with the development of this plan.

### **2. Biodiversity (Tim Porteous)**

The “Need a Hand” brochure, offering assistance to landowners with the management of bush and wetlands, has been distributed to all rural addresses. We continue to receive a continuing flow of enquiries about this service, many relating to pest and weed management issues, and some to QE II National Trust covenants.

### **3. Waiwhetu (Tim Porteous)**

The report considering the options for dealing with the contaminated sediments has been completed by our consultants URS New Zealand Ltd. The main conclusion is that we need to do further work to identify the degree of risk posed by the sediments in their current location. We need to know more about whether it matters if the sediments are left in place. We have already begun to look at this in relation to the river

ecosystem but the URS report says we need also to look at the risk to people in more depth. It also asks for a more defined quantification of the volume of the contaminated sediments. The present estimates are based on the assumption that the contamination is evenly spread throughout the sediment. However, if it is not, there could be a significant cost reduction. The report is being discussed by the Waiwhetu Action Group and we await their views, however, it does seem that it will be necessary to identify the level of risk more completely before proceeding with a costly clean-up operation.

#### 4. **Take Action (Jo Campbell; Richard Morgan; Jo Fagan; Eleanor Phillips; Susan Hutchinson-Daniel )**

The second school term concludes at the end of June and with it the first six months of the *Take Action* programme. In the first term three schools did the guided version of *Take Action*: Pukerua Bay, Greytown, and Paparangi School. Action projects were completed with all three schools. Paparangi School ran a stream festival on 27<sup>th</sup> March at Seton Nossiter Park. Some of the action projects were demonstrated at the launch on 22<sup>nd</sup> March.

Seven schools completed the trails unguided in term one and went on to do action projects with varying levels of assistance from us.

Oxford Crescent, Naenae Intermediate and Northland schools have done the guided programme in the second term. Oxford Crescent has finished their action projects, the other two are ongoing. Three unguided schools, Gladstone, Paraparauma, and Mangaroa, are working on their action projects. Pauatahanui School staff have been trained to use the stream testing kit.

#### 5. **Environmental Education Pilot Schools Project (Jo Campbell)**

As part of our efforts to support environmental education beyond our own programmes, Jo is continuing to work on this national initiative to build environmental education into the work and management of schools. There are about 60 schools piloting this approach. Jo worked with Plimmerton School last term, helping the school to include environmental education in its teaching of the curriculum and to act environmentally in its day-to-day operation. New pilot schools are now being finalised and are likely to include Paparangi and Cornwall St schools.

## 5. **Take Care (Nigel Clarke et al.)**

With the planting season upon us, many of the groups supported by the Council are buying, growing, and planting plants. There has been increased activity over the last three months, particularly for those groups that are in their second year of funding (and receive up to \$10,000). Significant planting efforts are occurring at Manuka Street (in Masterton), Otari-Wilton's Bush, Glenside, and Waitohu. The Waimapehi Stream group is working steadily on its planned information structure and nursery, and the Greta Point group is seeking consents for the penguin enclosure. The Greendale group has recently constructed a walkway through the kahikitea stand and has spent considerable time mulching their plantings to prevent weed growth.

Staff contributed to the New Zealand Ecological Restoration Network Restoration Day at Battle Hill on 20<sup>th</sup> of April. The focus for the day was wetland restoration. Care groups were invited to attend the event to mix with and learn from the experience of others doing this kind of work.

## 6. **Global Impact Day (Kirsten Forsyth; Nigel Clarke)**

Deloittes Consulting and the Council combined to hold a successful Global Impact Day on the 10<sup>th</sup> of May. Nigel and Kirsten organised a planting, involving about 60 people, at the Smith property on the Kakariki Stream (a trial site of the riparian management programme). This is the second time we have done this for this company and it demonstrates the mutual benefits that can be found for the environment and for the corporate sector in such events.

## 7. **Staff**

Two new staff members have joined the Department. Eleanor Phillips has commenced work on a part time basis and Susan Hutchinson-Daniel in a full time capacity. Both Eleanor and Susan will be working on the school and community programmes.

# Resource Investigations Department Report John Sherriff, Manager

## June 2002

### 1. Resource Information

#### 1.1 Flood Warning

The Resource Investigations Department provides a flood warning and monitoring service for the western part of the Wellington Region. Rainfall and river level recorders around the Region automatically relay information to the Regional Council Centre. When specified rainfall intensities or river levels are reached, the system automatically alerts staff who implement response procedures.

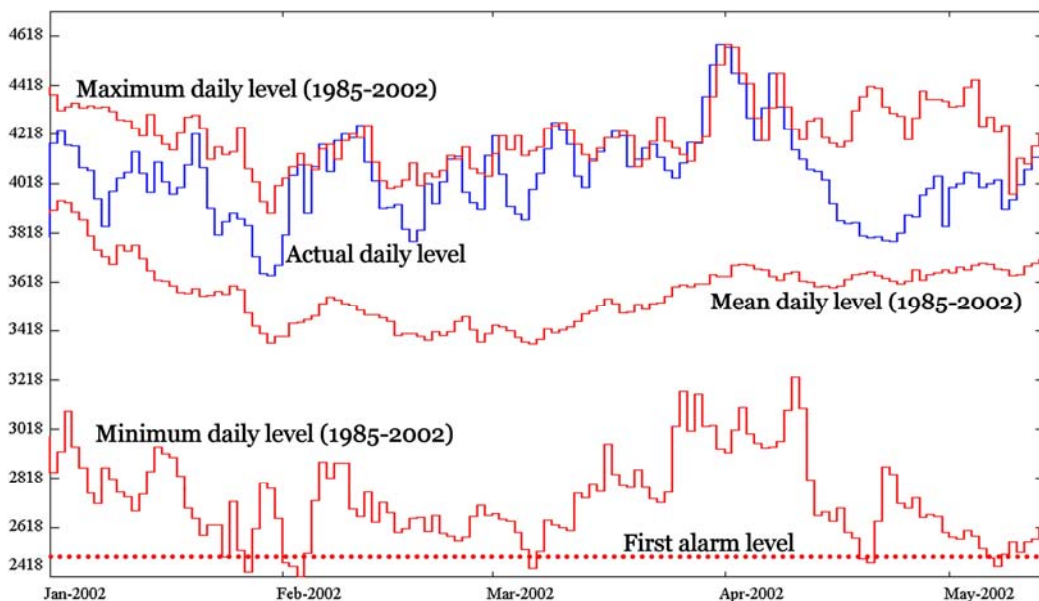
Since the last meeting of the Committee only one alarm was received and responded to. This was on 23 March 2002 and related to heavy rainfall at Taungata.

### 2. Resource Analysis

#### 2.1 Groundwater Levels

The Department monitors groundwater levels at 46 sites around the western Region. We use two of these bores, McEwan Park at Petone and Hautere Plain on the Kapiti Coast as general indicators of the state of groundwater resources in these areas.

##### *Lower Hutt Groundwater Zone – Upper Waiwhetu Artesian Aquifer*



Artesian pressure measured at the McEwan Park monitoring bore has been well above the long-term mean for the entire year so far.

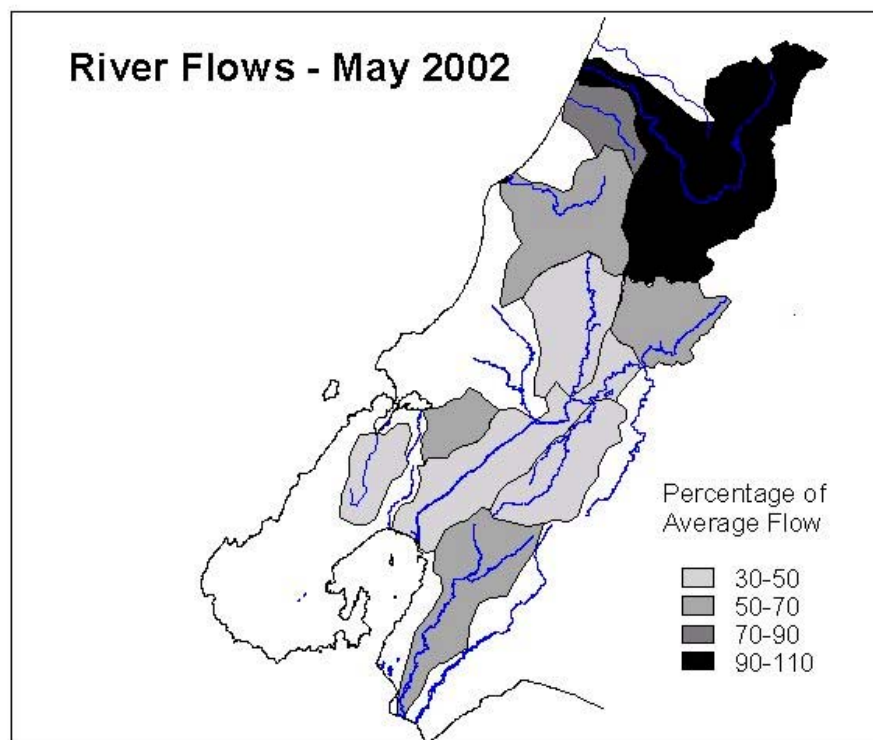
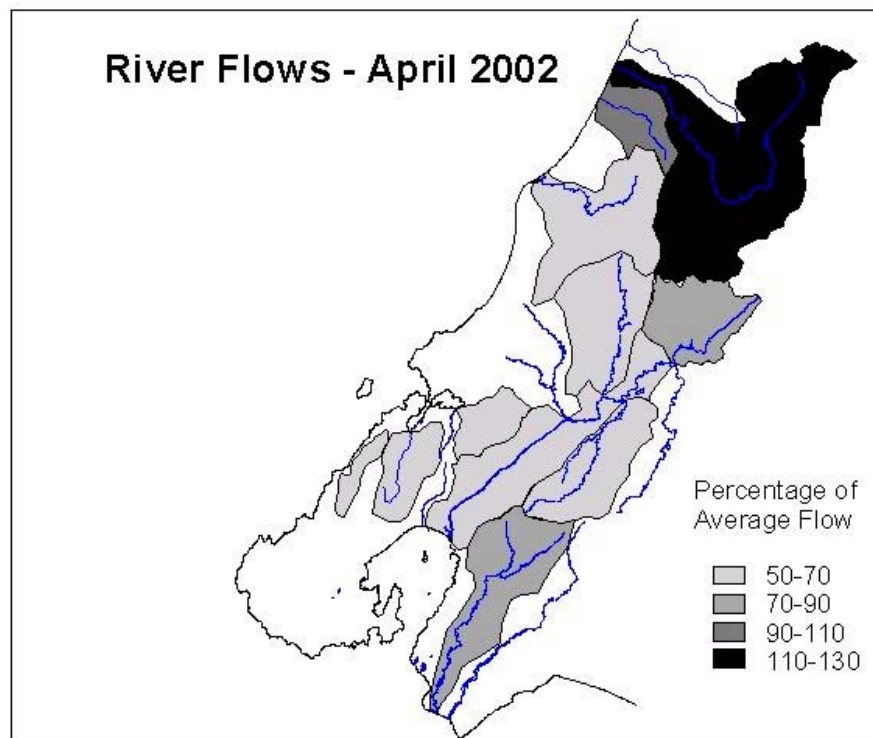
### ***Kapiti Coast***

Kapiti groundwater levels are at, or above, long-term mean values. The relatively wet summer period has allowed aquifers to fully recover from record low levels observed during 2001.

## **2.2 Rainfall and River Flows**

April rainfall was generally below average, with only the south-eastern rain gauges reading near average totals due to continuing southerly fronts. Most other areas had between 50% and 70% of their average rainfall. Wellington City had only 32 millimetres – 30% of its average.

May was dry over the entire western Wellington Region. Less than half the average rainfall fell over much of the area. River flows were also very low with only the Otaki River and Mangaone Stream getting above 60% of their normal average flows. The Hutt, Wainuiomata and Pauatahanui catchments produced only 40% of normal flow.



River flows as a percentage of normal for April & May 2002.

2.3 Air Quality Monitoring

2.3.1 Ambient Air Quality Monitoring

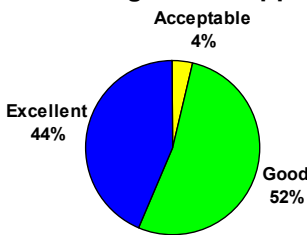
We currently monitor ambient air quality at two sites in Lower Hutt (Birch Street Reserve) and Upper Hutt (Trentham Fire Station).

The graphs below represent air quality at the location indicated when the monitoring results are compared to ambient air quality guidelines. The assessment categories are as follows:

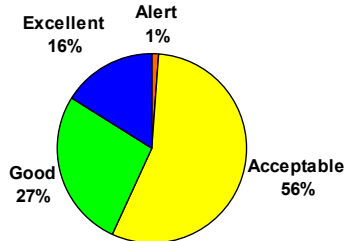
Category	Maximum Measured Value	Comment
Action	Exceeds Guideline	Completely unacceptable by national and international standards.
Alert	Between 66% and 100% of the guideline	A warning level which can lead to guidelines being exceeded if trends are not curbed.
Acceptable	Between 33% and 66% of the guideline	A broad category, where maximum values might be of concern in some sensitive locations, but are generally at a level that does not warrant dramatic action.
Good	Between 10% and 33% of the guideline	Peak measurements in this range are unlikely to affect air quality.
Excellent	Less than 10% of the guideline	Of little concern.

Results for the Past Six Weeks at Upper Hutt

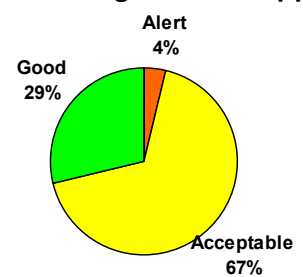
8-Hour Average CO at Upper Hutt



24-Hour Average NO<sub>2</sub> at Upper Hutt

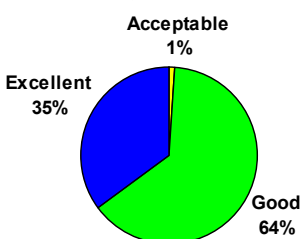


24-Hour Average PM<sub>10</sub> at Upper Hutt



Results for the Past Six Weeks at Lower Hutt

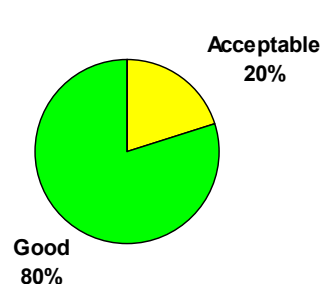
8-Hour Average CO at Lower Hutt



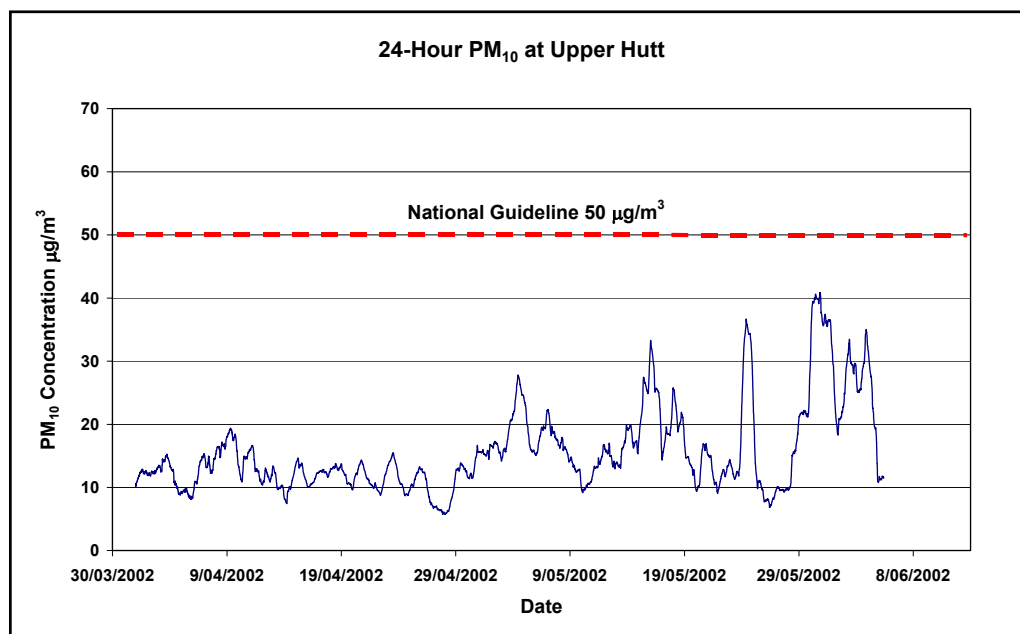
24-Hour Average NO<sub>2</sub> at Lower Hutt



24-Hour Average PM<sub>10</sub> at Lower Hutt



As we move into winter we experience cold, calm nights that prevent the dispersion of pollutants. This leads to a rise in pollution levels. The graph below illustrates the general rise in ambient particle concentrations at Upper Hutt. Note that towards the end of May 2002 PM<sub>10</sub> levels fall into the 'Alert' category of the air quality indicators.



### 3. Resource Quality

Our Resource Quality team provide a pollution response service to the western Region. They are also involved in monitoring compliance for non-consented activities, and waste management and contaminated sites issues. This year we are beginning to implement the Council's new pollution prevention programme *Take Charge*.

#### 3.1 Pollution and Non-compliance Complaints

A summary of pollution complaints, our performance in responding to them and enforcement action taken is reported separately.

#### 3.2 Unwanted Agrichemical Collection

Collection of unwanted agricultural chemicals commenced in the Wairarapa on the 15 March. The following Table summarises progress to 31 May 2002.

Registrations received	289	
Collections completed	195	
Total chemical collected	11 802 kg	60.5 kg per property
Quantity needing to be exported for disposal	7811 kg	66%
Quantity able to be disposed of locally	2452 kg	21%
Quantity able to be re-issued	1539 kg	13%

The overall response rate is low (6%) compared to other parts of New Zealand. Registrations picked up after we set and advertised a final date for registrations.



# Harbours Department Report

## Mike Pryce, Manager

**June 2002**

### 1. Harbour Navigation Aids

All navigation aids are operating satisfactorily. On 28 May, the NIWA Baring Head waverider buoy broke loose and was later recovered from the beach. It is due to be replaced by NIWA by late June, but obviously wave data is not available during that period.

### 2. Oil Pollution Response

Six reports of oil on the water were investigated but no further action was required.

### 3. Departmental Activities

In early May, a two-person team of Jennifer Sutton, a barrister and Mike Pryce, Manager Harbours were appointed by the Director of Maritime Safety Authority (MSA) to undertake a review into the MSA oil pollution response on the *Jody F Millennium*. This is under section 325 of the Maritime Transport Act.

(As a matter of best operating practice, the Director has determined that he will always review the MSA response following a Tier 3 marine oil spill response. The purpose of the review is to learn from past responses to improve future responses.)

Manager Harbours attended the meeting of the Oil Pollution Advisory Committee in Wellington on 7 May.

Patrick Atwood attended a 3-day revalidation course in Marine Oil Response Management at Te Atatu in Auckland between 8 – 10 May

Patrick Atwood attended the Dangerous Goods Working Group meeting on the 16 May where the training requirements in the draft of Marine Rule Part 24A was discussed and modified before being put out for submissions. Managers Harbours attended the meeting of the National Boating Safety Forum in Wellington on 17 May.

On 15 May, the Local Government (Infringement Fees for Offences: Wellington Regional Navigation and Safety Bylaws) Regulations 2002 became law.

#### 4. **Beacon Hill Signal Station**

A webcam has been installed at Beacon Hill, initially for the “Our Harbour” exhibition held in the Wellington City and Sea Museum. After the exhibition closes, its use will be further developed.

#### 5. **General**

On 5 & 6 June, the 241-metre roll-on/roll-off cargo ship *Tamerlane* visited Wellington for the first time, an example of the larger ships that call at New Zealand ports.

# Resource Policy Department Report Wayne Hastie Manager

June 2002

## 1. **Maintaining Regional Policies and Plans (Murray McLea and Nicola Shorten)**

Proposed Regional Plan Changes were publicly notified on 9 February 2002. The Proposed Changes include withdrawal of the Transitional Regional Plan, changes to bore rules on the Kapiti Coast, and other small changes to all the other Regional Plans except the Regional Coastal Plan.

The summary of submissions was notified on 2 May. Further submissions close on 7 June. Legal advice was received that one of the 18 submissions and parts of another submission are outside the scope of the plan changes. Following a careful examination of our options, the submissions outside the scope of the plan changes were omitted from the Summary.

One of the omitted submissions is about prohibiting the use of 1080. Further submissions are being received on this submission even though it was not included in the Summary. There is no doubt that issues relating to the legal validity of submissions will continue.

In respect of the aquaculture reforms, we have had a number of inquiries asking what the regional council are planning to do about the new aquaculture provisions, and have also been discussing with the Department of Conservation what their role is in the tendering process. One enquiry has come from Mr Riddiford, who then forwarded our response to the Primary Production Select Committee. The Committee has asked for information about what progress the Council is making and staff are preparing a reply.

In terms of coastal occupation charges, we are trying to put a value on the coastal marine area using methodology developed by the Auckland Regional Council. This will form part of the advice we will provide to the Council in the next few months when a decision will need to be made on whether or not the Council adopts a charging regime.

We continue to meet with Wellington City Council staff, their consultants and CentrePort's consultants about changes to the Coastal Plan relating to noise in the port area. Some further technical matters are being advanced by the City Council.

## 2. **Regional Plan Implementation**

### **Silt Guidelines (Paul Denton)**

Technical problems with the preparation of the diagrams have delayed this project. However, we now have the new Silt Guidelines completed to a final draft stage. Copies have been sent to all territorial authorities, Transit New Zealand, and relevant Council departments for review and comment. In addition, we will advise other external parties that the draft is available on the Internet and that we will receive comments up until 30 June. We will then make any necessary revisions and bring the guidelines to the Committee for approval.

### **Marine protection (Paul Denton)**

Good progress is being made on the three key aspects of this project – community engagement, integrated decision making and information management.

The project is to be launched by Hon Marion Hobbs and Hon Margaret Shields on 28 June at the Museum of the City and Sea. We hope that all Committee members will be able to attend.

A consultant has been engaged to progress a legislative review of decision making affecting marine biodiversity. Following completion of the review, we will either undertake some analysis or proceed with a series of interviews to look at how decisions are made in practice. The aim is to help us identify linkages and opportunities for public participation, and, perhaps more importantly, where these are missing.

We have acquired a copy of the Ministry for the Environment's metadata entry tool "MetaCreature 1" and will soon be entering information on the study area. Our aim is to document existing information which can be used, in conjunction with a user needs analysis, to identify information gaps.

### **Wetland Recovery Programme (Melanie Dixon)**

The draft Wetlands Action Plan is the subject of a separate report to the Committee.

### **Freshwater Ecosystems (Murray)**

The Department is providing advice and assistance to the Water Group on native fish enhancement above weirs in water supply catchments. Fisheries in these catchments could be improved by providing suitable fish passes. A meeting with the Water Group on 24 May has resulted in a report being commissioned for the Orongorongo River on fish passage implications of the water supply weir, particularly from a native fish perspective.

We expect to receive our contracted report on recent surveys of Inanga spawning sites in the Wairarapa in the next few days.

A draft brochure for members of the public on fish passage through culverts has been prepared. Printing of the brochure may be delayed pending the outcome of the

branding process. Draft conditions for resource consents relating to culverts have been circulated to consents staff and guidelines are being prepared for staff involved with processing consents.

### 3. **Iwi matters (Keriana Wilcox)**

A technical workshop was held on 15 May on GIS (Geographical Information Systems). The workshop was well received and participants shared experiences that they have had in collecting information and using GIS. The workshop would not have been possible without the support and involvement of our GIS technical experts, Richard Jongens and Tim Watson.

The rohe walkover planned for the Councillor Iwi training session on 29 May was cancelled as we were unable to make arrangements with any of the Iwi. However, the session was used for a presentation by the Wellington Tenth Trust on the history of their organisation and on the possible implications of the WAI 145 claim on the Wellington Region.

We have agreed with Kapiti Coast District Council to jointly fund the printing of the Ngati Raukawa Otaki River and Catchment Iwi Management Plan 2000. Both of our councils supported the preparation of the Plan, although the substantive funding was provided from the Ministry for the Environment's Sustainable Management Fund.

The Council has signed a contract with Rangitaane o Wairarapa to prepare an inventory of sites of significance. The project will be completed in February 2003. All other current projects are progressing. We will be asking Iwi to prepare end of year reports in accordance with their administration funding contracts. The reports are due by 15 July 2002.

### 4. **Reporting on the State of the Environment (Nicola Shorten)**

Work has continued with the implementation of the Regional Monitoring Strategy. Summary information on the state of the environment has been completed and will be published on the Council's Internet site.

### 5. **Hazards**

The options paper being prepared by Tonkin and Taylor on management options for the tsunami hazard continues to progress well. A workshop was held on 10 May to discuss the findings with local authority staff, and we are awaiting a revised version of the report incorporating the feedback from the workshop.

A draft report on meteorological hazards and climate change was received from our consultants, NIWA and the Council's own Mike Harkness. Comments have been provided and we expect to receive the final report in the next few weeks.

The findings from both the tsunami and meteorological studies will be reported to the next meeting of the Committee.

I have participated in a Ministry for the Environment supported project to develop guidelines and land use controls relating to faultlines.

**6. Urban Growth Issues (Wayne Hastie)**

Good progress continues to be made on this project. A presentation was made to territorial authority chief executives from the western Region on work completed to date. The chief executives agreed to set up a joint steering group to progress matters. In the interim, our informal interim steering group has begun making presentations to the western corridor local authorities. A presentation will be made to the Policy, Finance and Strategy Committee on 4 July.

A short presentation on Wellington City Council's Northern Growth Management Plan will be made at the start of this meeting.

**7. CentrePort Environmental Consultative Committee (Wayne Hastie, John Holmes)**

I attended the meeting of this Committee on 6 June. John Holmes was also present for part of the meeting to present an update on progress with the enhancement of the Kaiwharawhara Stream. CentrePort is providing assistance with this project. The Committee discussed a number of environmental issues related to the Port. A key project is the dredging of some berths and the harbour entrance. CentrePort is soon to commence public consultation on this project.

**8. Staff**

Rosalind Groves resigned from her position of Hazard Analyst to travel overseas. I'm pleased to advise that we have appointed Rylee Pettersson to the position. Rylee has been working on contract at the Institute of Geological and Nuclear Sciences.

# Emergency Management Department Report

## Rian van Schalkwyk, Manager

June 2002

### 1. Social

#### 1.1 Community Relationships

- United Nations Deployment

From 21 April to 12 May the Manager, Emergency Management was involved with the United Nations Relief Mission to Palestine to assist the United Nations Relief Works Agency (UNRWA) at the Jenin Refugee Camp. The role involved:

- Assisting the United Nations Resident Humanitarian Co-ordinator
- Co-ordination of response and emergency information
- Assessment of the emergency situation and the international relief requirements
- Establishing an On-Site Operations Co-ordination Centre (OSOCC)
- Co-ordinating reports to disaster relief organisations

A short presentation on the Jenin Mission will be made at the next meeting of the Committee.

- Project Phoenix

Planning work is continuing in anticipation of the Exercise Phoenix in July. Emergency Management Department staff have facilitated tabletop exercises in Kapiti and the Wairarapa.

Questionnaires have been circulated to many organisations with roles in civil defence emergencies asking them to assess their ability to respond in a major earthquake.

Debbie Cunningham gave a briefing about the Exercise at a recovery workshop run by the Earthquake Commission.

The Department of Prime Minister and Cabinet have met with WRC Emergency Management staff to determine how they could be involved in Exercise Phoenix.

- The Emergency Management Department hosted a delegation from the Chinese Seismological Bureau.

- The Manager, Emergency Management gave a lecture at Massey University on the role WRC plays in managing risks from Natural Disasters.

## 1.2 Territorial Authority Relationships

- The Emergency Management Officer has facilitated three workshops with THCC and UHCC to determine how the emergency management requirements of the Hutt River Floodplain Management Plan will be implemented.
- The Manager, Emergency Management participated in the Hawke's Bay Regional Council annual exercise as an exercise umpire. The scenario was a flood event.

## 1.3 Central Government Relationships

- The Manager, Emergency Management continues to be involved in the National Public Education Strategy Work Group. A radio campaign designed by the group will start on 4 June.
- The Emergency Management Officer attended the national planning conference facilitated by the Ministry of CDEM.

## 2. Environment

### 2.1 Earthquake reports

Since the last Environment Committee meeting 39 reports for earthquakes bigger than 3 on the Richter Scale were received from IGNS. Of these the following were felt in the Wellington Region:

<b>2002 May 18 mag.</b> 4.2 (82 km deep)	<i>50 km north of Picton</i>
<b>2002 May 11 mag.</b> 4.8 (14 km deep)	<i>40 km east of Castlepoint</i>
<b>2002 May 11 mag.</b> 3.8 (12 km deep)	<i>40 km east of Castlepoint</i>
<b>2002 May 10 mag.</b> 4.1 (14 km deep)	<i>50 km east of Castlepoint</i>
<b>2002 May 6 mag.</b> 4.0 (11 km deep)	<i>40 km east of Castlepoint</i>
<b>2002 May 6 mag.</b> 4.7 (12 km deep)	<i>50 km east of Castlepoint</i>
<b>2002 May 2 mag.</b> 4.5 (40 km deep)	<i>10 km west of Porirua</i>
<b>2002 Apr 21 mag.</b> 3.7 (34 km deep)	<i>10 km north-west of Porirua</i>

### 2.2 Special Weather Bulletins

Three Special Weather Bulletins (all for strong wind) were received during the month of May. All parties involved were notified and no problems were experienced.

### 2.3 Communications

Weekly tests of the communications network are still being carried out. The system is functioning well and no problems have been experienced.



## Richard Waddy, Divisional Accountant Financial

**Position: 30 April 2002**

### 1. Operating Results

We are pleased to report the operating results for the ten month period ended 30 April 2002.

<b><u>Environment Division</u></b>				
<b><u>Summary Income Statement</u></b>				
<b><u>For the Eight Month Period Ended 30 April 2002</u></b>				
	<b><u>Actual</u></b> <b><u>\$000s</u></b>	<b><u>Year to Date</u></b> <b><u>Budget</u></b> <b><u>\$000s</u></b>	<b><u>Variance</u></b> <b><u>\$000s</u></b>	<b><u>Full Year</u></b> <b><u>Budget</u></b> <b><u>\$000s</u></b>
Rates	5,702.1	5,702.1	--	6,842.5
Other Revenue	1,749.7	1,576.0	173.7 F	1,894.2
<b>Total Revenue</b>	<b>7,451.8</b>	<b>7,278.1</b>	<b>173.7 F</b>	<b>8,736.7</b>
<b>Less:</b>				
Direct Expenditure	6,195.2	6,623.0	427.8F	8,068.9
Indirect Expenditure	716.7	789.6	72.9 F	949.6
<b>Total Operating Expenditure</b>	<b>6,911.9</b>	<b>7,412.6</b>	<b>500.7 F</b>	<b>9,018.5</b>
<b>Operating Surplus (Deficit)</b>	<b>539.9</b>	<b>(134.5)</b>	<b>674.4</b> <b>F</b>	<b>(281.8)</b>

### 2. Operating Surplus

For the period an operating surplus of \$540,000 was posted which is a significantly above our budgets for the corresponding period. The budgets provide for a small deficit of \$135,000.

The result translates to a net favourable variance \$674,000 and comprises increased revenue of \$173,000, and reduced expenditure \$501,000.

### 3. Revenue

Total Revenue at \$7,452,000 was \$174,000 above our budget target of \$7,278,000. The increased revenue is the result of some large notified resource consent applications - the Otaki Pipeline Project (\$67,000), the upgrade of SH58 and SH2/58 (charges recovered this year - \$90,000), Exide's air discharge for their lead battery recycling business (\$16,000) and the Western Wastewater Treatment Plant overflows (\$14,000).

Furthermore, this year the annual resource management charges raised revenues - in total, of \$225,000 (budget - \$198,000). The increase is mainly a result of the new charging policy which incorporates a higher staff chargeout rate.

### 4. Total Expenditure

The Division's total expenditure, at \$6,912,000, remains significantly below the level budgeted - some \$501,000 (or 7.2 %) under budget.

#### The main reasons for this variance are:

- Personnel costs are presently under budget by \$65,000. Staff movements in the period caused the under-spend.
- External Contractors and Consultants were \$323,000 under budget for the period. While expenditure has been committed, the letting of some contracts has been slightly delayed. These include the collection of unwanted Agricultural chemical, remedial work at some of our contaminated sites and the stormwater investigation work. Although these projects were late starting, work is well advanced and expenditure is anticipated to catch-up with our budgets. However, some of the stormwater budget will be carried over because of weather conditions preventing our ability to collect samples. Additionally, the spend on Iwi projects trails by some \$108,000 behind our expected expenditure level.
- The Bad Debts and Provision for Bad Debts has been adjusted for the "Sarfaq" debt (\$32,000). As a result the previous situation has been reversed to show a favourable contribution of \$17,000.

### 5. Capital Expenditure

The capital expenditure programme is now on track with net expenditure some \$37,000 short of our budget expectations at the close of the period. The shortfall is mainly with the Ecobus, the vehicle to be used as part of the *Take Action* programme. That vehicle has been purchased and work is progressing on its contents. To some extent that shortfall was offset by the purchase of a further three vehicles (total cost - \$18,500). These vehicles were surplus to the Water Group's needs and used by the Environment Division over the summer months. Our budgets provided for a short-term lease for two of these vehicles, whilst the other was unbudgeted. These vehicles have since been sold.

# Consents Management Department Report

## Paula Bullock, Manager

### June 2002

#### 1. Consent Statistics

In the period to 31 May 2002 we have received 358 consents. This compares with 365 consents received for the same period last year.

#### 2. Appeals

The last remaining appeal on the boatshed applications was withdrawn the day before the Environment Court was due to hear the appeal. At a pre hearing conference the judge indicated to Marilyn Goddard that she did have not any evidence to back up her case.

Mediation for the Western Wastewater Treatment Plant has been set for 19 June 2002. It is likely that most of the negotiations will occur between WCC and the appellant.

Callover in the Environment Court was held last month for the State Highway 58 (Haywards) and State Highway 2 (Melling to Petone) appeals. In the State Highway 58 case, Transit are negotiating directly with the appellant and there is no need for us to be involved at this stage. For State Highway 2, we indicated to the Court that there did not seem to be any issues regarding WRC consents. The court has asked the appellants to reconsider whether they need to proceed with appeals against WRC.

#### 3. Compliance

##### 3.1 General

Complaints regarding odour have decreased over the last month. June is traditionally a busy compliance month finishing off the annual compliance inspections before the end of the financial year.

##### 3.2 Abatement Notices

The abatement notice we issued to Mr and Mrs Bates last month requiring them to remove blocks from the Waimeha Stream has been complied with.

##### 3.3 Infringement Notices

We have issued two infringement notices since the last meeting of the Environment Committee. Both notices were issued to United Environmental Limited for odours beyond their boundary that were objectionable and offensive.

### 3.4 **Prosecution and Enforcement Orders**

#### ***Burrell Demolition***

In my last report to the Environment Committee, I reported that the Court of Appeal made no formal order for dismissal of Burrell's appeal, but invited a joint memorandum from counsel to dispose of any variation that may be necessary to the High Court's declaration. Our legal counsel has drafted a memo to the Court regarding clarification of condition 12 and the meaning of disposition. However, it is unlikely Burrell will concur with our clarification and meanings and, therefore, the court will have to make the decision.

#### ***Hayes Earthmoving Services Ltd***

In March we laid charges against Hayes for the release of sediment from a silt pond into Taupo Swamp. We have since had call over at the Environment Court and Hayes asked for a deferral of the hearing date. We are currently working through the disclosure process.

## 4. **Other**

### 4.1 **Customer Satisfaction Survey**

In conjunction with the Consents and Compliance Section in the Wairarapa and the Resource Quality section of the Resource Investigations Department, we are carrying out our biennial customer satisfaction survey. The survey is divided in to four groups of customers:

- Recent Applicants – customers who have applied for a resource consent within the last two years;
- Existing Consent Holders – customers who have an existing resource consent;
- Submitters – customers who have submitted on a resource consent in the last two years;
- Complainants – customers who have made a complaint about a consented or unconsented activity (a new group added to the survey this year).

AC Nielsen has undertaken the survey for us and we should have the results before 30 June 2002.

Applicant	Proposal	Date Consent Lodged	Date Submissions Closed	Number of Submissions Received	Pre-hearing Held	Hearing Held	Hearing Committee Members	Date Decision Released	Granted or Declined
M Goddard	Overnight stays in boatshed.	11/05/00	19/07/00	133	N/A	21/08/00 – 23/08/00	Councillors Buchanan, Gibson and McDavitt	20/09/00	<b>Appeal withdrawn (no more outstanding appeals)</b>
New Zealand Galvanising	Discharge to air for contaminants from a hot dip galvanising process and associated activities.	24/07/00	29/08/00	4	08/09/00	Application on hold to allow for monitoring results to be discussed with applicant and submitters			
Transit <sup>1</sup>	Consents associated with the construction of an interchange at the intersection of State Highway 2 and 58.	07/11/00	19/01/01	99	N/A	27/06/01 – 16/07/01 Reconvened on 01/08/01-02/08/01 and 27/08/01	Commissioners Helen Tobin, Russell Howie and Richard Fowler	12/10/01	Granted – 1 appeal received
Transit <sup>1</sup>	Consents associated with the realignment of State Highway 58.	07/11/00	19/01/01	99		27/06/01 – 16/07/01 Reconvened on 01/08/01-02/08/01 and 27/08/01	Commissioners Helen Tobin, Russell Howie and Richard Fowler	12/10/01	Granted – 1 appeal received
Wellington City Council	Change of consent monitoring conditions for the Moa Point Pump Station.	02/11/00	08/12/00	2		On hold for further information in relation to monitoring requirements.			
Wellington City Council	Renewal of discharge of milliscreened effluent to the coast during wet weather events, Western Wastewater Treatment Plant.	20/12/00	05/03/01	9	17/05/01	8/10/01 9/10/01	Ian Buchanan Ian Stewart	26/10/01	Granted, one appeal – <b>mediation scheduled for 19 June</b>

Applicant	Proposal	Date Consent Lodged	Date Submissions Closed	Number of Submissions Received	Pre-hearing Held	Hearing Held	Hearing Committee Members	Date Decision Released	Granted or Declined
Transit <sup>2</sup>	Upgrade of State Highway 2 from Dowse Drive to Petone.	30/03/01	29/05/01	100+		1/10/01 – 9/10/01	Helen Tobin, Richard Fowler, Barry Butcher		Granted – three appeals received
BP Oil NZ Ltd	To change the use of an existing pipeline by resting it on petroleum product instead of seawater between shipments.	20/7/01	16/10/01	17		Application on hold at request of applicant to assess further development options			
John Gabites	Discharge to air from Piggery and other land use consents.	25/09/01	01/11/01	7	12/11/01	Application on hold at applicants' request			<b>Consent no longer required</b>
Sink F69 Charitable Trust	To create an artificial reef by sinking the former HMNZS Wellington.	3/10/01	3/12/01	72		25/02/2002 and reconvened 6/3/02	Ian Buchanan, Miria Pomare, Irvine Yardley	27/3/02	<b>Granted, 2 appeals received</b>
Wellington Regional Council – Flood Protection	To extract gravel from the Waikanae River for flood protection purposes.	04/12/01	08/02/01	11		Scheduled to be held early July 2002			
Wellington Regional Council – Flood Protection	Hutt River Ava-Ewen realignment river works.	18/03/02	29/04/02	4		4 June 2002	Christine Foster and Aka Arthur		
Nuplex Environmental	Discharge to air from operation of a liquid and hazardous waste processing plant.	15/4/02	28/5/02	18		Application on hold for further information			

1 These applications will be heard jointly with Hutt City Council, Porirua City Council and Upper Hutt City Council

2 These applications will be heard jointly with Hutt City Council