

Water supply and weather summary
for period 1 December to 28 February

Total supply

	Avg day ML		Peak day ML		Avg day peak wk ML		No. of days 200+ ML		No. of days 190-199 ML		No. of days 190+ ML	
	Rank		Rank		Rank		Rank		Rank	Rank		
2004/05	161.9	5	203.2	4	192.0	2	1	4	5	3=	6	4
2003/04	156.6	6	187.4	7	171.7	7	0	5=	0	7	0	7
2002/03	166.3	3	207.6	2	190.9	3	2	2=	5	3=	7	3
2001/02	156.5	7	198.4	5	180.6	6	0	5=	2	5	2	5=
2000/01	172.7	2	204.2	3	190.4	4	2	2=	16	1=	18	2
1999/2000	162.5	4	197.3	6	186.7	5	0	5=	2	5	2	5=
1998/99	179.4	1	215.6	1	199.9	1	17	1	16	1=	33	1

ML = millions of litres. The peak week is the maximum seven-day supply period

Per-capita supply

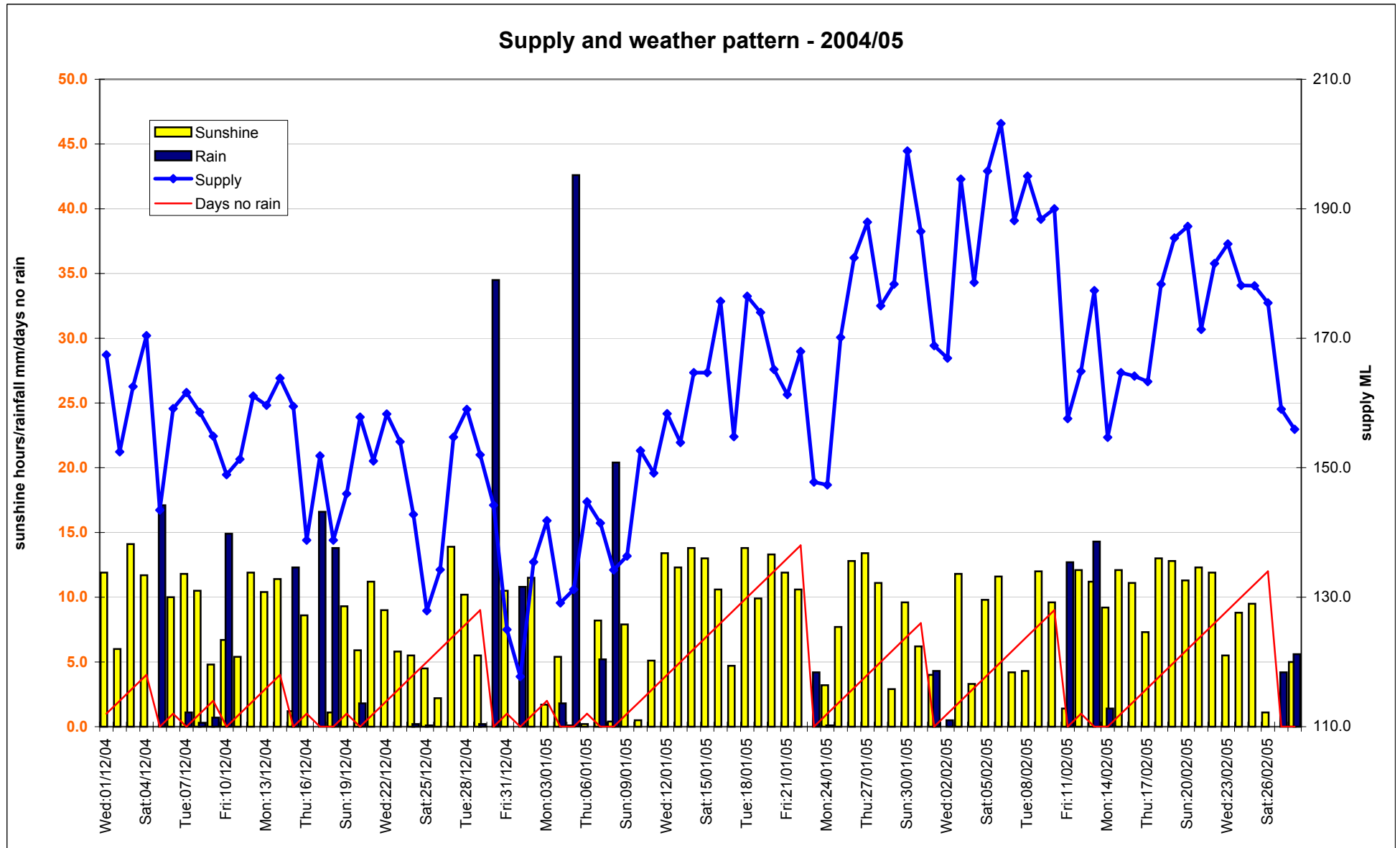
	Population	Avg day litres/head		Peak day litres/head		Avg day peak wk litres/head	
		Rank		Rank		Rank	
2004/05	367,600	440	6	553	6	522	5
2003/04	363,400	431	7	516	7	473	7
2002/03	358,200	464	3	580	2	533	3
2001/02	354,000	442	5	560	4=	510	6
2000/01	352,800	489	2	579	3	540	2
1999/2000	352,100	461	4	560	4=	530	4
1998/99	351,000	511	1	614	1	569	1

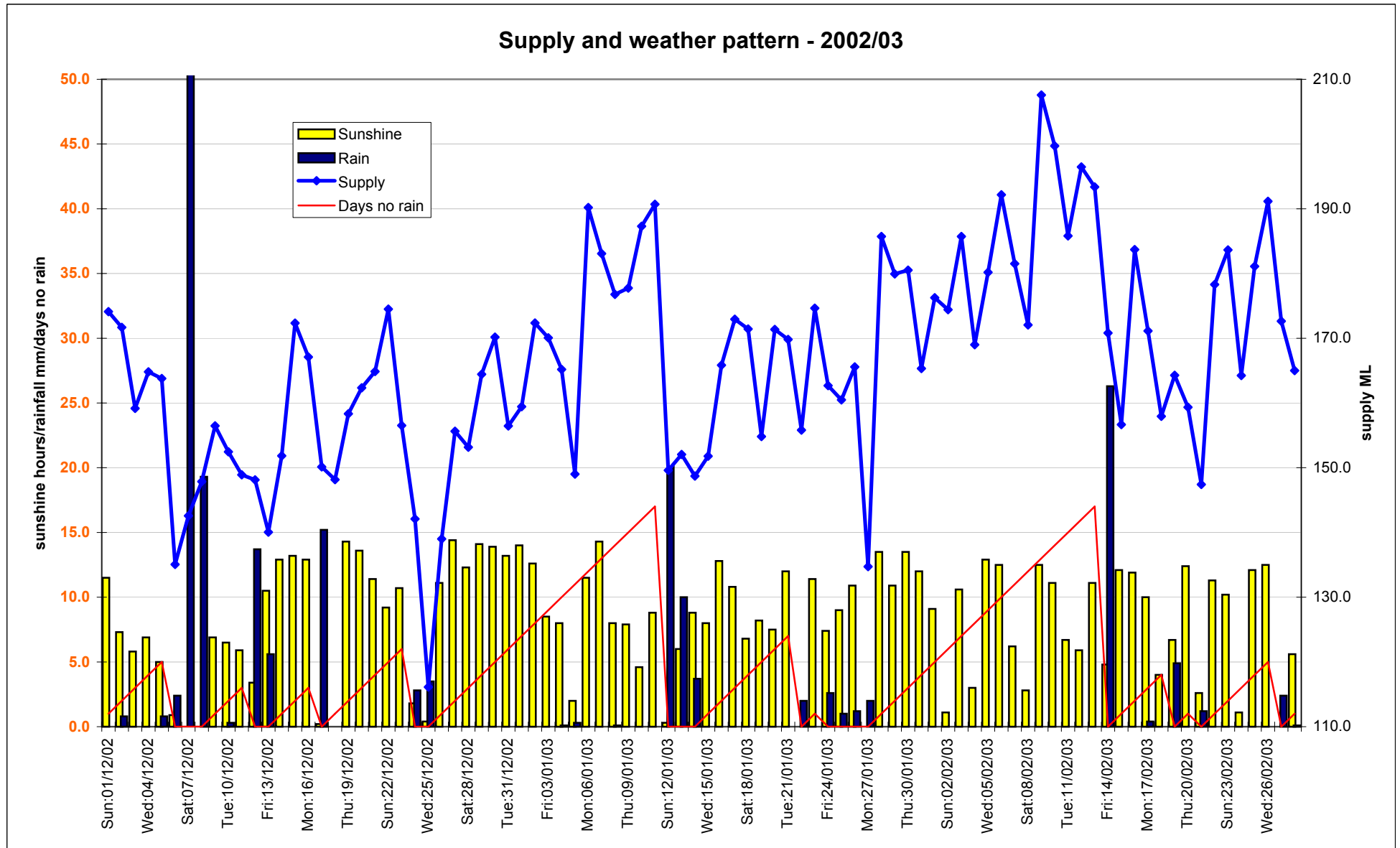
Population is estimated usually-resident at 30 June of prior year end (Statistics NZ)

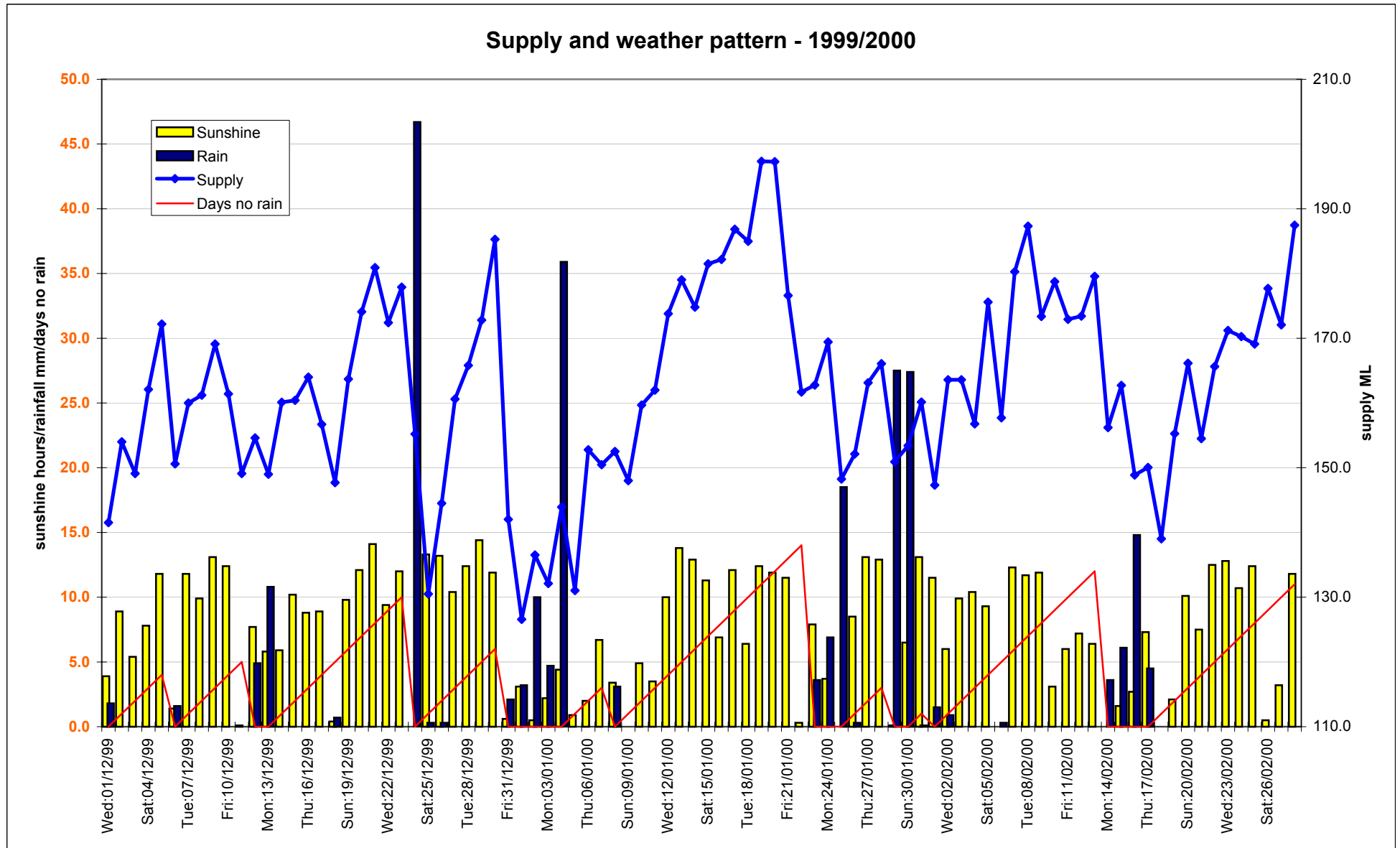
Weather

	Rain total mm		Avg day hrs sun		Max pd days no rain		Periods no rain 14+ days	
	Rank		Rank		Rank		Rank	
2004/05	241.7	4	7.7	4	14	3=	1	3=
2003/04	529.8	7	6.3	6	8	7	0	5=
2002/03	198.7	3	8.3	2	17	2	2	1=
2001/02	490.2	6	6.1	7	10	6	0	5=
2000/01	81.5	1	8.2	3	13	5	0	5=
1999/2000	242.1	5	6.9	5	14	3=	1	3=
1998/99	162.6	2	8.4	1	25	1	2	1=

Rainfall and sunshine data from Metservice - recorded at Kelburn







Per capita summer water supply 1 Dec to 28 Feb

