

Geoff Skene
Manager, Environmental Education

Environmental Education Department Report – September 2007

1. *Take Action*

Staff are busy with schools in all phases of both the water and air programmes. At the moment there are 23 schools at one stage or another of these programmes. More schools than ever have undertaken planting this year either in the school grounds, or more often, with a local care group. In the last six weeks Chanel college students in Masterton planted 160 trees and carex alongside the school stream. At the Waikanae Estuary Kenakena students planted 860 plants at two planting events. On 10 August 170 flax were planted by the stream running through Lakeview School (Masterton). St Michael's pupils put in approximately 600 plants at Hulls Creek (Upper Hutt) on 23 August and Waikanae School students were busy at the Waikanae Estuary in August, planting over 500 plants. We alerted the media to these planting events with the result that most were covered in relevant newspapers.

It is pleasing to report that staff and students of the Kura kaupapa Maori O Wairarapa are having real success with *Take Action* for Water, using the te reo version of the programme. These translated resources were produced at the request of Ara Tahī about three years ago and have been used by a number of local kura and by other schools around New Zealand. As far as we know, there are very few similar educational resources in te reo available.

2. *Take Care*

There is an annual report on *Take Care* elsewhere in this Committee's papers, so I won't elaborate on this here, except to say that this is a busy time for most groups, being well into the planting season.

3. *Corporate volunteers*

The planting season has also seen a number of planting days involving corporate volunteers at care group sites around the region. These include:

- Some Greater Wellington transport division staff – 230 plants at Hull's Creek (5 July);
- Corporate division staff – 750 plants at Moehau Stream (18 July);

- ANZ Corporate Banking – 450 plants at Horokiri Stream (20 July);
- OMV – 350 plants at Island Bay (9 August);
- Accor Hotels – 800 plants at Kaitoke Regional Park (16 August);
- Pharmac – 1000 plants at Paraparaumu Beach (23 August);

4. Business sustainability

There is also an annual report on this work stream in these papers.

A recent highlight has been the presentation of the annual Sustainable Business Awards on September 5th, which are run in conjunction with the Sustainable Business Network's Get Sustainable Challenge. This event was attended by around 220 people and was held in the Embassy Theatre. The Council Chairperson, Cr. Buchanan, presented the Sustainable Business of the Year Award to Dulux Paints for the company's extensive efforts to carry out its business in an environmentally friendly way. The full list of winners is:

- Trailblazer Category (Large business), and Sustainable Business of the Year: Dulux Paints
- Trailblazer Category (Small to medium enterprise): Squiz
- Trailblazer Category (Not for Profit): YHA Wellington City
- Emerging Business Category (Large): Contact Energy Ltd
- Emerging Business Category (SME): Starfish Fashion
- Sustainable Innovation Category: 3R (Responsible Resource Recovery)

The Challenge and the Awards event, for which Greater Wellington is the principal Sponsor, have gone from strength to strength over the last year with the awards night growing in prestige. The event has doubled in the number of people who attend. More important, from a Greater Wellington perspective, has been the growth in membership of the Sustainable Business Network in the region, with membership doubling to around 125 businesses since last year. Our aim in supporting the Challenge is to get businesses engaged in the process of becoming more sustainable and involvement in the activities and services provided by the SBN ensures this happens.

5. Staff matters

Two members of staff, Jo Fagan and Michelle Hayward, will go on maternity leave before the committee meets again. Jo has made a significant contribution to *Take Care* over the years and Michelle has spearheaded the Council's business sustainability services since 2005. We wish them all the very best for

the year to come. Also, Kate Mackenzie, who runs the Corporate Volunteer programme and has very ably looked after a number of care groups and restoration sites around Pauatahanui Inlet, will soon be leaving for the Bay of Plenty. Kate has been a tireless worker and has made a really important contribution to the restoration of degraded habitats in the region. We also wish her all the best for the future.

Nicola Shorten
Manager, Environmental Policy

Environmental Policy Department Report – September 2007

1. Maintaining regional policies and plans

1.1 Regional Policy Statement review

Greater Wellington officers are currently working through comments received during the June/July consultation period, revising and clarifying draft provisions, and improving integration across provisions.

Workshops with the Council on the first integrated draft will occur in November and December this year. Approval to release the full integrated draft will then be sought from Council at the Policy, Finance and Strategy meeting in February 2008.

1.2 Plan Change 1 to the Regional Coastal Plan

Proposed Plan Change 1 to the Regional Coastal Plan sets up a regime for managing noise related to port activities. This plan change is being done jointly with Wellington City. Their District Plan manages noise above mean high water springs and our Regional Coastal Plan manages noise below mean high water springs. The end result will provide for port noise management that is integrated across jurisdictional boundaries.

The plan change was notified on 19 December 2006. There were 8 submitters. A joint hearing on both plan changes was held on 2 July 2007. The hearing committee has completed its deliberations and make recommendations to the Policy Finance and Strategy Committee on 27 September.

1.3 Plan Change 3 to the Regional Freshwater Plan

Plan change 3 to the Regional Freshwater Plan was publicly notified on 26 May 2007. This plan change limits the taking of additional water from three groundwater zones and eight streams in the Wairarapa. Submissions on the plan change closed on 29 June 2007 and four were received. These submissions have been summarised, the availability of the summary publicly notified, and further submissions called for. Further submissions close on 15 October.

2. Regional Policy Statement and regional plan implementation

2.1 Biodiversity voluntary change research programme (Ohariu study)

An update on this project is the subject of a separate report to the Committee.

2.2 Freshwater ecosystems programme

A fish pass at Hulls Creek was constructed in August. Like other fish passes that we have built, this one is a joint exercise with a care group. The Silverstream Care Group obtained funding from central government's Sustainable Management Fund, which contributed significantly to the project. Greater Wellington applied for, and holds, the resource consent for the fish pass. We also managed the construction at the site.

3. Natural hazards research programme

3.1 It's Our Fault Project

Greater Wellington is contributing to the recently started "It's our fault" project (IOF). The IOF project is an ongoing 5 year research programme, and Greater Wellington has contributed money to conduct a related investigation on the Ohariu Fault. Recently, trenching work was carried out to look at past rupture events on the fault. The data collected from this work is currently being analysed and will contribute to the IOF project.

3.2 Tararua Segment and Wairarapa Study

In conjunction with the Civil Defence and Emergency Management Group, Greater Wellington is looking to provide more funds for the IOF project. This work will provide better information about rupture histories in the Wairarapa and a plan is in place to collaborate with the Wairarapa Engineering Lifelines Association and GNS to produce a report on the effects to communities of a large earthquake in the Wairarapa. This will involve a specific study on the Taurua section of the Wellington fault that runs through the Wairarapa.

3.3 Wellington Harbour Survey

In conjunction with the Department of Conservation and NIWA, Greater Wellington is a partner in a survey of the Wellington Harbour seafloor. The project will involve a complete side scan sonar survey of the harbour to a resolution of less than one meter. This will provide detailed information on the bathymetry and sediments of the harbour seafloor. The survey will provide important data for examining coastal issues, such as sediment transport and erosion, storm surge and tsunamis.

3.4 Storm-surge modelling project

The information collected in the Wellington Harbour survey will feed into a storm-surge and tsunami modelling project that will be operated over two years. Phase I of the project is set to commence this year and will involve modelling the effects of a 1:100 year storm-surge event on the Wellington coast. A GIS digital bathymetry and terrestrial elevation model will be developed and onto this extreme water levels and storm surge elevations will be modelled. Phase II of the project will look to extend this analysis to the entire Greater Wellington coastline - taking in Kapiti Coast, Porirua and populated areas of the Wairarapa coast. Depending on progress, phase II may commence in early 2008.

4. Urban Design Protocol

Councillor Sally Baber recently signed the Urban Design Protocol certificate. A press release is being prepared about this.

Greater Wellington has started work on an audit of our facilities. The project involves visiting a sample of buildings and structures, and critiquing how well they adhere to good urban design principles. The audit is intended to reveal where we are performing well and where improvement is needed. It will inform Council policies and future construction projects.

Ted Taylor
Manager, Environmental Monitoring and Investigations

Environmental Monitoring and Investigations Department Report – September 2007

1. Rainfall and River Flows

1.1 Rainfall

August 2007 was a month that was windier than normal with frequent southwesterlies, and sunnier than normal in Wellington¹. The result was below-average rainfall for the time of the year throughout much of the Wellington region. (Figure 1.) Eastern areas were particularly dry, with about half the average August rainfall in Wainuiomata, Wairarapa plains and eastern hills. In contrast, the Tararua Ranges received frequent rainfall throughout August and rainfall totals for the month that were about average.

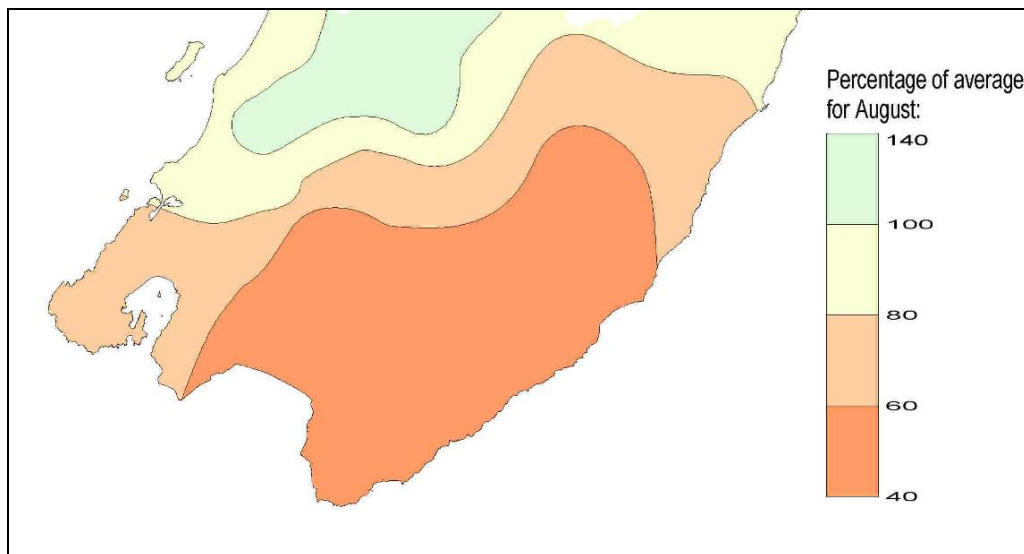


Figure 1: Rainfall during August 2007 as a percentage of the long-term average for August

The Wellington region has had below-average rainfall during 2007 to date with some areas (e.g. Wairarapa plains and Wainuiomata catchment) having only about half the rainfall usually expected by this time of the year (Table 1). There has now been seven consecutive months of below-average rainfall at Wainuiomata Reservoir. (Figure 2.) As indicated by Figure 3, although soil moisture in the eastern hills recovered significantly due to rainfall in June and

¹ NIWA climate summary for August 2007

July, soil moisture is still slightly below average for the time of the year (at early September 2007).

Table 1: Rainfall at representative monitoring stations for August 2007 and 2007 to date, compared to average

| | August 2007 rainfall (mm) | Long-term average for August (mm) | 2007 to end-August (mm) | Average year to end August (mm) | Percentage of long-term average for year to date |
|-------------------------------|---------------------------|-----------------------------------|-------------------------|---------------------------------|--|
| Otaki Depot (Kapiti Coast) | 63.0 | 81.1 | 416 | 651 | 64% |
| Karori Reservoir (Wellington) | 88.2 | 122.3 | 656 | 851 | 77% |
| Wainuiomata Reservoir | 130.5 | 209.5 | 716 | 1350 | 53% |
| Angle Knob (Tararua Range) | 670.5 | 667.9 | 3923 | 4346 | 90% |
| Alloa (Featherston) | 64.2 | 104.2 | 328 | 726 | 45% |
| Tanawa Hut (East Wairarapa) | 113.0 | 138.6 | 704 | 931 | 76% |

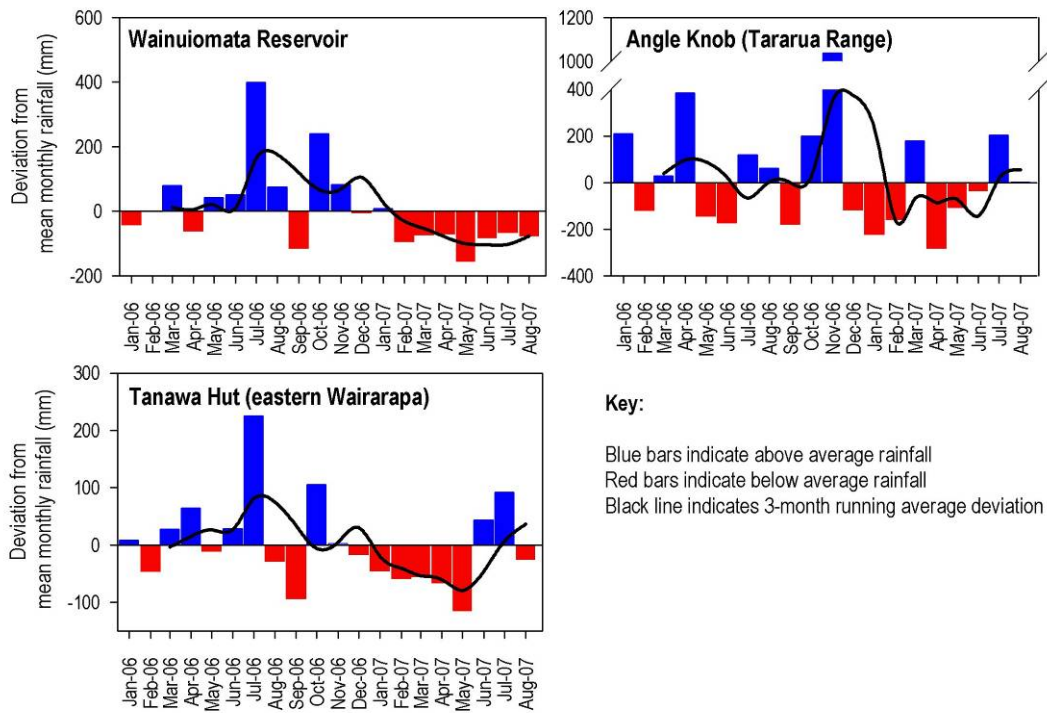


Figure 2: Monthly rainfall deviation from average at key monitoring locations

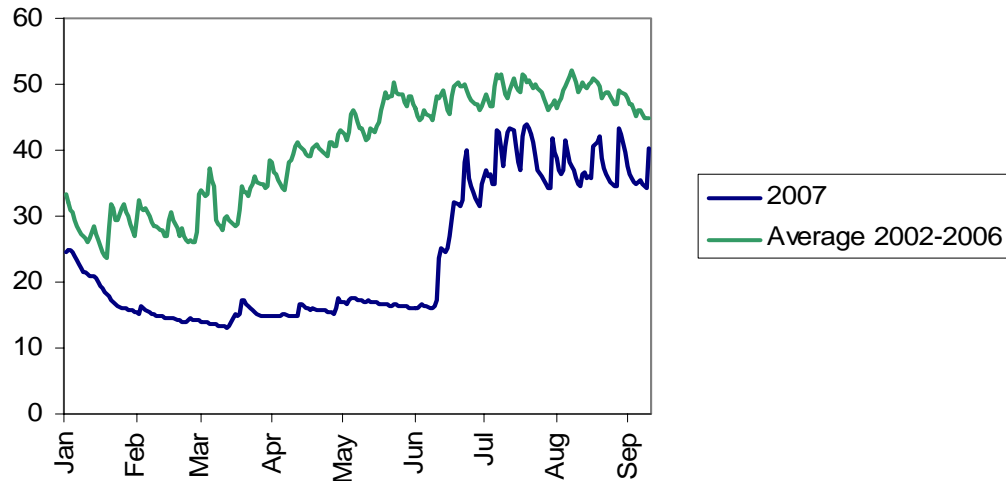


Figure 3: Soil moisture at Tanawa Hut (north east Wairarapa) during 2007 compared to average

1.2 Rivers

Although river flows in parts of the region remained below the long-term average for the August, river with headwaters in the Tararua Range tended to have about average flow for the month (Table 2). This was due to frequent ‘freshes’ during late July and throughout August. However, river flows in the Wainuiomata and eastern Wairarapa rivers remained more stable than usual and below average for the time of the year.

Table 2: August 2007 river flows at selected monitoring stations

| | Average flow August 2007 | Long-term average for August | Percentage of long-term average |
|-----------------------------------|--------------------------|------------------------------|---------------------------------|
| Waikanae River at Water Treatment | 6.1 m ³ /s | 5.7 m ³ /s | 107% |
| Hutt River at Taita Gorge | 25.9 m ³ /s | 31.8 m ³ /s | 82% |
| Wainuiomata River at Manuka Track | 0.95 m ³ /s | 1.21 m ³ /s | 79% |
| Waiohine River at Gorge | 27.8 m ³ /s | 27.9 m ³ /s | 100% |
| Ruamahanga River at Waihenga | 98.1 m ³ /s | 127.0 m ³ /s | 77% |

1.3 Hydrological Monitoring Network review

Implementation of the recommendations of the Hydrological Monitoring Network review is well under way. We have installed or upgraded flow monitoring sites in the Parkvale Stream, the Waipoua River, the Mangatarere Stream and the Mawaihakona Stream. Rain gauges have been installed at Makara, Paekakariki and in the Longbush valley. Lake level monitoring has been installed at the Pencarrow lakes.

2. Floodwarning

The Environmental Monitoring and Investigations Department provides a flood warning and monitoring service for the Wellington region. Rainfall and river level recorders around the region automatically relay information to the Regional Council Centre and the Masterton office. When specified rainfall intensities or river levels are reached the system automatically alerts staff who implement response procedures.

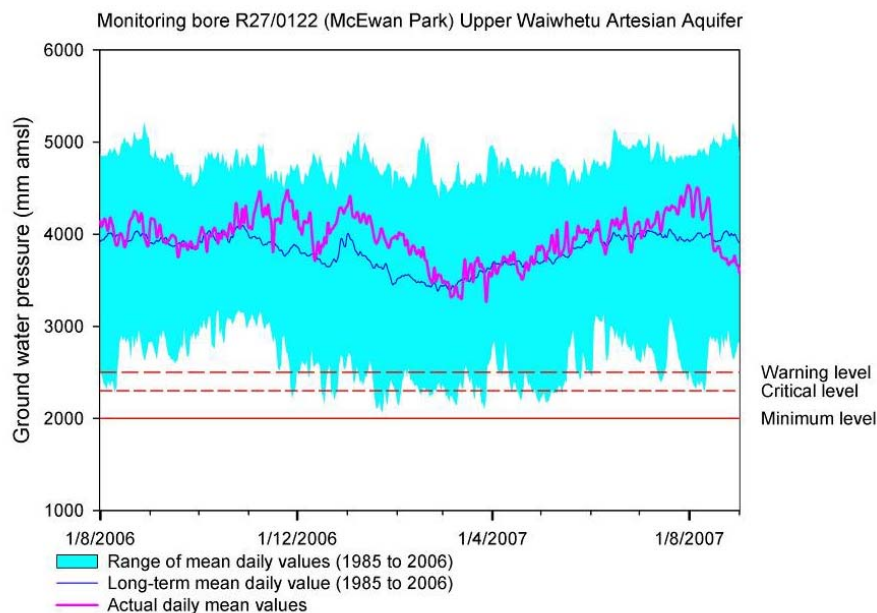
Since the last meeting of the Committee one event triggered five alarms in the Wairarapa. There were no flood events in the Western part of the region.

The outlet from Lake Onoke was blocked between the 23rd and 29th of August. Water levels in Lake Wairarapa were above the winter target level of 9.95 metres for all of the month.

3. Groundwater levels

3.1 Lower Hutt groundwater zone

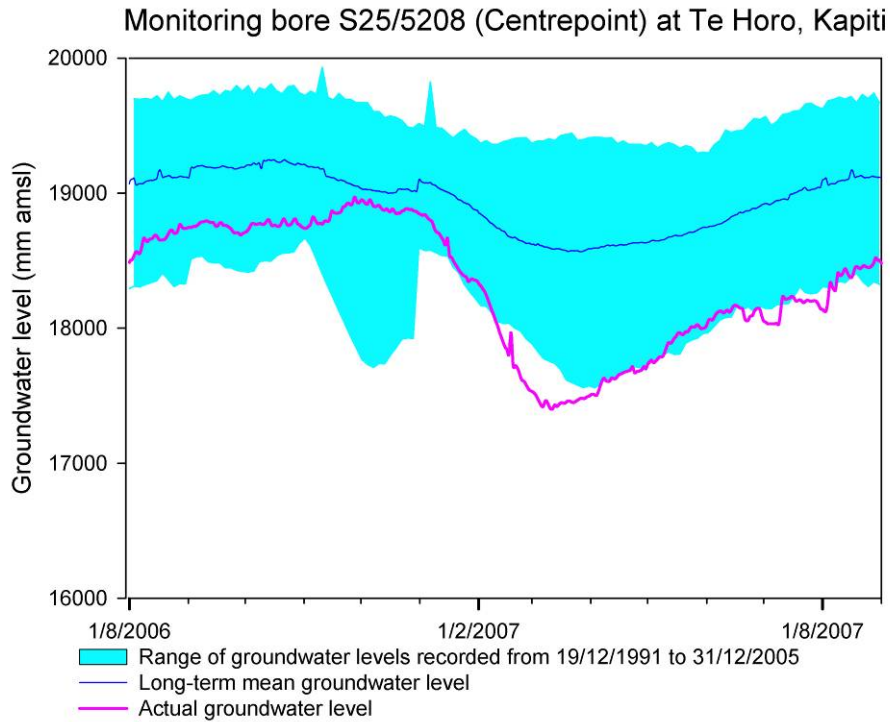
Groundwater levels in the Upper Waiwhetu Artesian aquifer were above long term average for the start of August and slightly below long term average for the end of August. The levels are well above the trigger levels for saline intrusion. New saline intrusion monitoring wells have been installed in the Petone foreshore, telemetry is currently being installed in these. These new wells will be in operation for monitoring the aquifer during the 2007/2008 summer period.



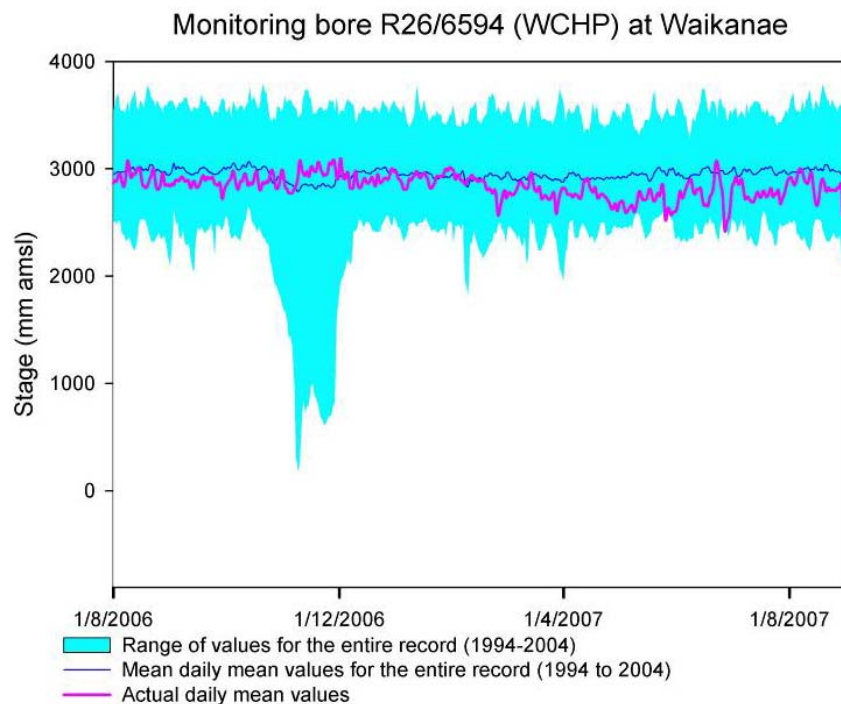
3.2 Kapiti Coast groundwater zones

Groundwater levels at our monitoring bore S25/5208 in Te Horo on the Kapiti Coast were just above the long-term minimum for August. Levels in Te Horo

have been below the long-term average for almost two years. Further desk top investigations will be continuing in the Te Horo area throughout this year.



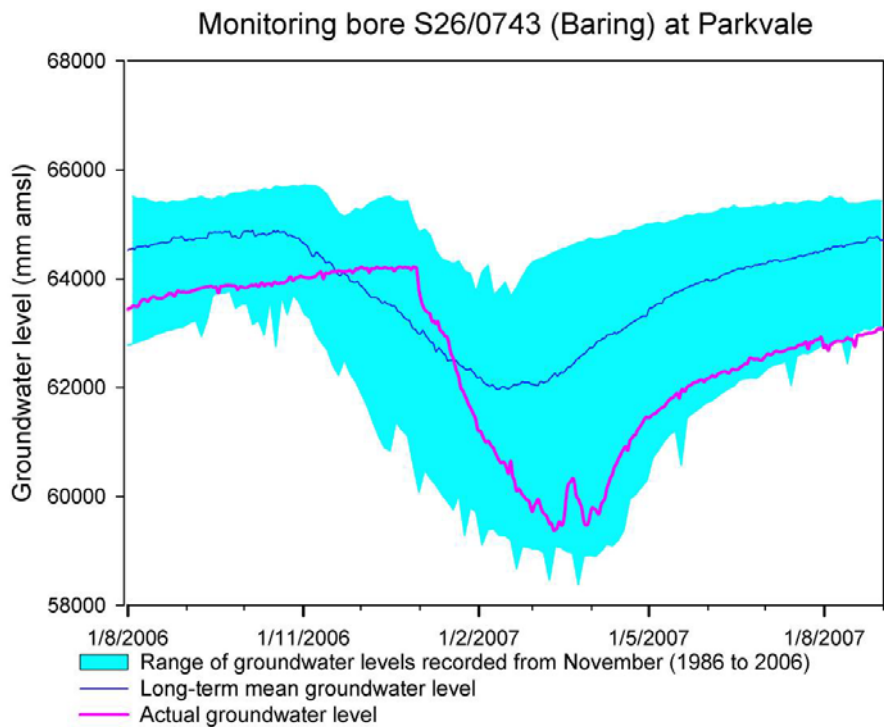
Groundwater levels in our deep confined monitoring bore R26/6594 in Waikanae were below average for August, but are above long term minimums. Lower levels in August are reflective of slightly lower than average rainfall and river flows, reducing recharge to aquifers.



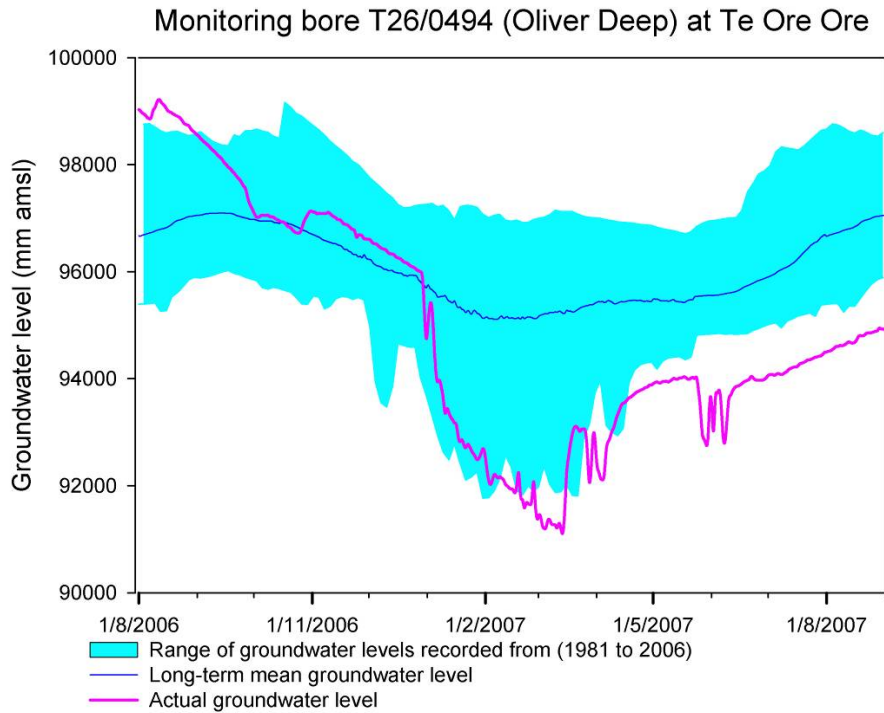
3.3 Wairarapa groundwater zones

Groundwater levels in the Wairarapa through August were generally low reflecting lower than average rain and river recharge through this period. If lower than average recharge continues through the coming months, it would be expected to see low groundwater levels through the next irrigation season.

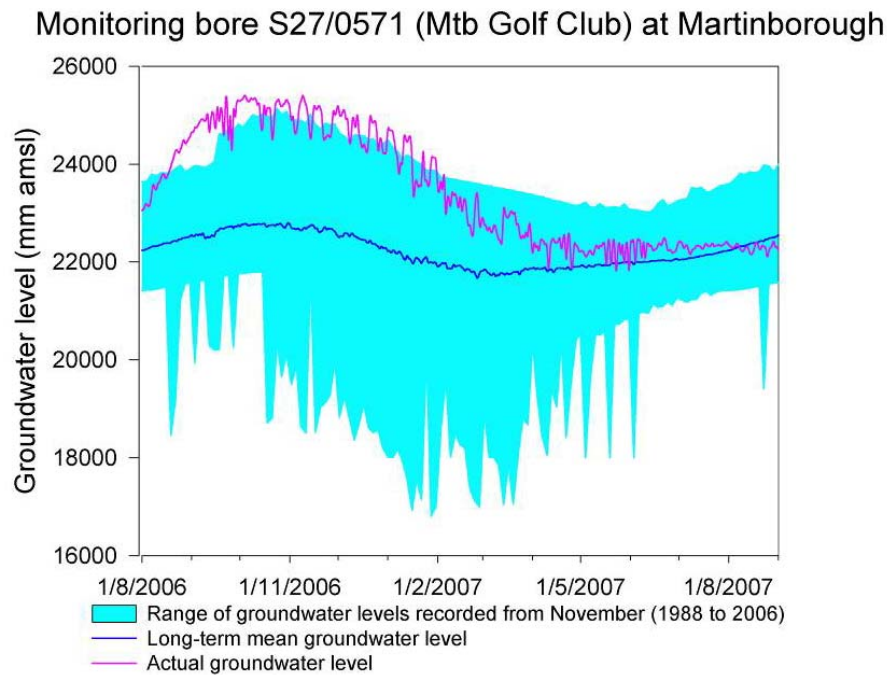
At our monitoring bore S26/0743 in the deep, confined Parkvale aquifer levels were still below long-term median for August, still tracking around the long-term minimum. This is reflective of below average rainfall recharge though winter and on going groundwater abstraction pressures.



In the mixed rainfall/river recharged Te Ore Ore aquifer, the levels at our monitoring bore T26/0494 have been at long-term minimum levels since May, this trend has continued in August. This is a reflection of high irrigation demand, low rainfall recharge and a lack of major river flows for the period.



Water levels in our monitoring bore S27/0571 in the rainfall recharged, semi confined Martinborough aquifer are just below average for this time of year. This is still a reflection of good recharge during the 2006 winter months, plus some rainfall recharge through the year. If significant spring rainfall recharge does not occur, levels would be expected to drop further over the coming months.



4. Air quality monitoring

4.1 National environmental standard for air quality

The limits for concentrations of contaminants in air were not exceeded in the period August in any of the region's monitored airsheds.

5. Contaminated sites

5.1 Selected Land Use Register

The Department maintains the Selected Land Use Register (SLUR) which records sites that because of their land use, past or present, may be contaminated. There are currently 1799 sites on the register. This register is able to be accessed by authorised council and territorial authority staff and this has occurred 2217 times in August. In this period there have also been 48 requests for information from the public.

6. Soil quality monitoring

A draft report has been received from Landcare Research setting out the results of the testing of soil samples collected from throughout the region earlier this year. The report will be presented to the Committee when finalised.

This study is a follow up to the '500 Soils Project' which looked at soils at 500 locations in New Zealand. A number of regional councils have continued this programme so that any trends are identified.

Preliminary conclusions suggest that for the most part, general land-use patterns in soil quality followed those of previous samplings. Two areas of possible concern are noted; the high nutrient status of market garden soils and the compaction and high nitrogen status of dairy farm soils.

7. Water quality

7.1 General

A number of technical reports are currently being finalised for publication. These include:

- A review of water quality and biological monitoring data collected from our 56 state of the environment river and stream sites
- The results of a water quality investigation in Hulls Creek
- Annual monitoring reports and summary report cards for air quality, hydrology, groundwater quantity and quality, coastal monitoring, freshwater quality and soil quality

These reports will be presented to the Committee when completed.

7.2 Didymo

We are working with the Biosecurity Department and others on plans for the surveillance and monitoring for didymo. This responsibility is being passed from Biosecurity New Zealand (BNZ) to regional councils, with BNZ inviting applications for 'seed funding' to aid this transition. We will be making an application for funding to initiate the programme and then will need to address funding for future years through the annual plan process.

8. Staff

Following interviews in August we are in the final stages of making appointments to the Environmental Scientist, Groundwater and Environmental Scientist, Land and Water Contamination positions.

Al Cross
Manager, Environmental Regulation

Environmental Regulation Department Report – September 2007

1. Consent statistics

The following consents processing data now reflects the entire region. In the period from 21 July to 31 August 2007 we have received 101 consent applications. This compares with 77 received for the same period last year.

Over the same period, we have processed 73 consents. This compares with 64 over the same period last year.

Our median processing time for non-notified consents (excluding s37 time extensions) rises to 19 working days for the last period. Our median processing time for the year stands at 17. We have continued to process a substantial number of notified or limited notified consent applications. Bore permit numbers have also continued to remain at a low to moderate level. Nevertheless, the median timeframe is quite high at the current time and I expect it to drop over the year.

One non-notified consent was processed out of time in 21 working days.

A summary of the notified consents we are currently processing is also attached for information.

2. Appeals and objections

2.1 Appeals

Meridian Energy Limited – Project West Wind

This relates to the joint decision to grant consents to Meridian Energy to establish a wind farm south of Makara.

Following the Environment Court's release of final revised consent conditions in July neither the decision nor final consent conditions (for landscape-visual, noise and earthworks) have been appealed to the High Court. Consent certificates were issued in mid August. We are continuing to work with Meridian to consider and approve supplementary environmental management plans. At this stage earthworks are programmed to commence in November.

Plans detailing the management of specific effects mainly associated with earthworks are being assessed on a site-by-site basis.

Waterfront Investments Limited (WWI) – Hilton Hotel

As reported at the last meeting the Court hearing was adjourned on 10 August without the case being fully heard. Considerable time was spent in the first session traversing traffic related matters both in terms of the delivery of evidence from the applicant and associated witnesses and questioning from the bench. The case is now scheduled to reconvene on 15 October for a further three days to conclude evidence from the remaining appellants.

The decision to grant applications for a five-star Hilton Hotel on the Queens Wharf Outer-T, subject to conditions, was appealed by five parties including the applicant; Miro Property Holdings and Prime Commercial Investments; Wellington Civic Trust and Waterfront Watch; Wellington Indoor Sports (subsequently withdrawn) and Intercontinental Hotel; and including two section 274 parties (other submitters who haven't directly appealed).

Wellington Marine Conservation Centre Trust – Aquarium of New Zealand (MEC)

The Court hearing for the MEC appeals concluded on 12 July after nearly two weeks and I reported the course of hearing at the last committee meeting, with GW issues largely centring on a challenge to GW's right to administer proposed activities in the coastal marine area at Te Raekaihau Point. A decision from the Court is expected before the end of the year.

The decision to grant the new joint applications for the MEC was appealed by Save the Point Trust, Chris Webster and Lili Prince, with two additional parties joining the appeal. Greater Wellington matters relate to less substantive aspects of the application, including jurisdictional issues, structures in the coastal marine area and discharges associated with construction and operations. WCC-decision related matters include natural character, landscape values, amenity, traffic management and sustainability.

Capacity/Wellington City Council: Western Wastewater Treatment Plant

Mediation between parties on these appeals commenced on 20 August. The first day enabled the parties to address expectations and scope out relevant matters to be covered in the mediation process. Mediation will be reconvened in February 2008 to enable WCC to audit the condition of the effluent pipeline.

Capacity/Wellington City Council (WCC), New Zealand Forestry Group and Action for Environment Incorporated have appealed Greater Wellington's decision to enable the applicant to continue to discharge effluent to the Wellington South Coast and Karori Stream (including discharges of odour). The decision enabled 20-yr durations for the main outfall discharge and air permit, and 10-yr durations for each of the three discharges of milliscreened or untreated effluent to both Karori Stream and the South Coast. Issues covered

by the appeals include the term of consent, effects on the receiving environment, and the state and ongoing integrity of the effluent pipeline.

A E & S W Benton Partnership

All parties have now signed the consent order, and we now awaiting confirmation of the decision from the Court. As discussed at the last meeting, the order will enable the consent holder to undertake an extensive pump test over a four year term. While water taken may be used for irrigation, the primary rationale behind the shorter term and reduced take is to enable groundwater data to be gathered which should to some extent help us understand the longer-term sustainability of the Kahutara aquifer.

These appeals related to a declined application to take groundwater from the Kahutara groundwater zone, which is affected by a non-statutory moratorium not to 'accept' further applications.

Greater Wellington: Land and River Operations Department (LARO) – Scadden's stopbank

We are still in discussions with Mr Barton regarding our respective positions on key matters at the heart of Mr Barton's appeal. We hope we are able to reach a satisfactory resolution soon thus avoiding the case being heard in the High Court.

This relates to A J Barton's appeal to the High Court on the Environment Court's decision to uphold GW's decision on LARO's proposal to upgrade an existing stopbank adjacent to the Ruamahanga River. The appeal relates to the status and use of a paper road and implications of the stopbank upgrade.

2.2 Objections

Currently there are no objections before us.

3. Compliance and enforcement

3.1 General

There are no general matters to report to this meeting.

3.2 Specific compliance

Whitby Coastal Estates - discharges from James Cook Drive subdivision development

Investigations of two incidents from April this year are now drawing to a close relating to implementing stream works and erosion and sediment control measures on site at James Cook Drive. The incidents concern the implementing of a stream mitigation plan required by consent conditions, and are critical to the appropriate management of the development activity. We will be making a decision within the next few weeks on what action, if any, we will take.

Transit NZ: Dowse to Petone Upgrade

Works have commenced at Maungaraki intersection on improvements to State Highway 2 between Dowse Drive and Cornish Street in Petone.

3.3 Abatement notices

We served 18 abatement notices in the last period to:

- An abatement notice was issued to Lesley Bradshaw for burning treated timber.
- Ratan Parbhu received two abatement notices, one to avoid unauthorised sediment discharges entering an unnamed tributary of the Owhiro Stream, and another to authorise, or remove the illegal fill material and reinstate the stream to its prior condition, at two sections of an unnamed tributary of the Owhiro Stream.
- Christopher Mason and Alexander Road Developments Limited were issued two abatement notices to cease works in and around the bed of a tributary of Hulls Creek, Upper Hutt. The works were in preparation for an unauthorised piping of the stream.
- Anthony De Vries and F I Investments Ltd received two abatement notices for sediment discharges from earthworks into adjacent watercourses, from a subdivision at the end of Mohaka Street.
- Gary Wakelin received an abatement to authorise, remove or mitigate an illegal diversion structure (stopbank), or its effects, in a floodplain, as it impedes flood flows, adjacent Masterton-Martinborough Road, Carterton.
- Clive Thompson and Parkvale Mushrooms Ltd received two abatement notices for illegal discharges of liquid waste to an unnamed tributary of the Parkvale Stream.
- Smart Dogs Capital City and Teleports NZ Limited (landowner) received an abatement notice for unauthorised discharges of contaminants to land from vehicle grooming and onsite processes. Both recipients were asked to provide Greater Wellington with a copy of the drainage plan for the site, including any modifications to ensure compliance.
- Scot and Judy Preston received an abatement notice for an illegal stopbank at Grays Road, Pauatahanui. They were required to authorise, remove or mitigate the effects of the structure.
- Oriol and Kerrie Martin received an abatement notice requiring them to cease using boatsheds for accommodation purposes, and to remove an unauthorised fence erected between two boatsheds.

- David Fogarty was issued a notice to authorise or remove a structure and deposited materials in an unnamed tributary of Mitchell Stream, Colonial Knob, Porirua.
- Two notices were issued to four parties connected with Wellington Egg Company, to cease discharges of egg waste and poultry effluent to land, and discharges to air from burning chicken carcasses, at Judgeford, Pauatahanui.
- Partsworld Holdings (NZ) Ltd and Maurice McNabb were issued a notice for illegal discharges of oily wastewater at Mortex Parts World, Wingate, Lower Hutt.

The abatement notice served on Oriel Martin to cease using his boatshed as a dwelling and for removing unauthorised extensions of decking have been appealed, and a stay on the notice has been granted by the Environment Court.

3.4 Infringement notices

Eight infringement notices were issued in the period to:

- An infringement notice was issued to M&M Construction for breaching a consent condition by diverting an unnamed stream in the Hutt River catchment prior to the completion of the construction of a stilling basin and rip-rap.
- Oriel and Kerrie Martin received two infringement notices for an unauthorised extension of boat shed decking between two boatsheds at Paremata Road, Pauatahanui, and use of a boatshed for accommodation purposes. The infringement notice for the unauthorised extension of structures was subsequently withdrawn.
- Kilmory Farms Ltd of Moreton Road, Carterton, received an infringement notice for unauthorised discharges of dairy effluent to surface water from a dairy shed and storage pond.
- David Fogarty was issued two notices for unauthorised tracking activities and for depositing material in an unnamed tributary of Mitchell Stream, Colonial Knob, Porirua.
- Anthony De Vries FI Investments Ltd received two notices for discharging sediment to a watercourse, and failure to comply with a previous abatement notice, at Mohaka Street, Wainuiomata.

3.5 Prosecution and enforcement orders

Two prosecutions and only one enforcement order application are currently before the Court. A number of orders are currently being implemented.

Capital Egg, Peter Van Dyk, Alan Hobbs and Te Kamaru Station

Following call-over on 12 September for two of the defendants we now have some progress in the case. Initially we were not confident of some forward movement particularly as pleas were still yet to be entered and to begin with were not being provided. On further insistence of the Court, the defendants indicated not guilty pleas, and we expect a Court hearing date to be set following a further call-over on 26 September.

This prosecution concerns charges against four parties for illegally dumping chicken manure, chicken carcasses and eggs in a gully head on Te Kamaru (Terawhiti) Station resulting in a direct discharge of manure into a tributary of Oteranga Stream. Eight charges have been laid in total for discharging from a trade premise to land and discharging to water.

Goodman Contractors Limited, Stanley Goodman and Colin Landy

This case was also called-over on 12 September, and is adjourned to 26 September to enable pleas to be entered. It will also enable sufficient time for outstanding issues to be resolved from earlier discussions between some of the defendants and GW.

This is a prosecution against three parties for an unconsented discharge of a substantial quantity of sediment to a tributary of Pauatahanui Stream in late November. The incident was significant in our view given the sensitive receiving environment of the Pauatahanui stream and inlet, thereby warranting prosecution.

J Gabites

This case relates to enforcement orders against J Gabites farm in Mangaroa Valley for ongoing discharges from pig effluent deposited around the property and earthworks to tributaries of Mangaroa River.

As reported previously, mediation to date has not proved particularly fruitful, and we are currently, with the aid of an independent expert, reviewing the erosion and sediment control plan and nutrient/contaminant management plan. The next step is then to determine whether we are able to once and for all resolve our concerns out of Court.

We still retain the right to proceed to a Court hearing should we not be satisfied with progress or the quality of the plans submitted.

Burrell Demolition Ltd

I am pleased to report that Mr Burrell has now completed remediation works in line with the enforcement orders. This included removal of the section of culvert concerned and removal of non-cleanfill material, and laying replacement fill. This is good news and reflects the considerable time and hard work put in by the officers concerned.

This enforcement order (and former prosecution proceedings) regards the unauthorised laying of a culvert in a tributary of Owhiro Stream at C&D Landfill, Happy Valley, Wellington.

3.6 Take Charge

There are no specific matters to report to this meeting.

The *Take Charge* programme for the period is discussed in the Pollution Control Report (report 07.643).

3.7 Significant incidents

Exide – excessive discharges of lead across southern boundary

Following the confirmation of a breach of Exide's consent for the discharge of lead in excess on consented limits at the plant's southern boundary, we have now received all final information and are finalising our enforcement decision. I hope to be in the position to verbally report this decision to you at this meeting.

We are still waiting for further information from Exide in relation to monitoring and maintenance practices before we are able to make an enforcement decision.

4. Major resource consents and other matters

4.1 Key notified consents update

Fully Notified

Stronvar Properties Ltd

These are applications for a 56-lot subdivision at Stronvar, Masterton involving applications for discharges of wastewater (from a community waste water scheme) and sediment from earthworks, taking water (for communal water supply), and erecting a dam to establish an amenity and stormwater treatment lake.

There have been delays in receiving further information on a range of substantial matters including community wastewater treatment, and the operation and integrity of the proposed lake. The delay is reasonable given the complexity of the matters being considered; however, the information is now pending and it is possible that applications may be heard before the end of the year.

Webstar

The applicant is continuing to investigate further issues raised by the single submitter regarding the significance of odours discharged beyond Webstar's boundary. A short-term trial of new discharges from new printing equipment assessed will also be extended to tie in with revised timeframes.

This is a replacement application from Webstar (Blue Print Group Limited), Masterton, to discharge fine particle matter (PM₁₀) and other contaminants to air from printing and gas-fired boilers. The processing of this application will consider air quality within the Masterton air shed, which sometimes exceeds NES for Air thresholds for PM₁₀ of 50 ug/m³.

O'More Partnership

Following completing an assessment of submissions and effects of the activity, the applicant is considering options including revising their proposal, in order to allay our concerns regarding stream piping. The stream piping works itself is a non-complying activity under the Regional Freshwater Plan, which means that all associated applications must also be rated similarly.

This is a proposal to construct and operate a cleanfill near Judgeford. The activities include associated discharges from the construction and operation as well as stream piping.

MDC - Masterton Wastewater Treatment Plant

Following the close of submissions on replacement applications for Masterton Wastewater Plant we have held ongoing discussions with the applicant and issued a request for further information (in line with what we originally requested prior to the application being lodged). We understand the information may be provided by the end of September. Preliminary assessment will continue and I hope that we will soon be in a position to also determine which external experts will support our assessment process. At this stage we are likely to require a wastewater and soil discharges expertise to assist us.

These applications are to discharge treated effluent to Ruamahanga River at Homebush, and to land in the general vicinity of Masterton wastewater treatment plant.

WCC/Capacity: United Water International sludge dewatering plant

At the June meeting I verbally reported that on 16 June we notified around 3500 property addresses in the Brooklyn, Morningson, Owhiro, Kingston area and 95 submissions were received.

We are assessing the application and have engaged Ron Pilgrim from SKM to assess our preliminary assessment of odour effects and that provided by the applicant. Currently we are appointing a peer reviewer to assist us with the technical assessment work.

At this stage a pre-hearing is set down for mid October and a hearing for mid November providing there are no unforeseen delays in the process.

These are WCC/Capacity's replacement applications for the sludge dewatering plant at the Carey's Gully Complex. They are the first set of consents due for replacement this decade.

Winstone Aggregates Limited

A pre-hearing meeting was held on 30 August attended by 30 neighbouring submitters. The pre-hearing enabled the applicant to clarify aspects of the application including explaining key effects of the quarry overburden development. The process has now been delayed as Winstones prepare further information connected to matters raised by submitters.

These are joint applications to GW and Hutt City Council (HCC) associated primarily with the development of a quarry overburden area at their Belmont Quarry site. Applications include the reclamation of watercourses on site, and the discharge to Hutt River of sediment from exposed fill material.

WCC/Capacity: Moa Point Wastewater Treatment Plant

These are replacement applications from WCC/Capacity for ongoing operations at Moa Point Wastewater Treatment Plant, including discharges of treated and semi-treated effluent (mixed disinfected, secondary treated and milli-screened) to Cook Strait via the long outfall, and discharges of odours associated with the effluent treatment process.

Submissions closed on 15 August with 15 submissions received.

Limited Notified

GW Flood Protection Department – Waitohu Stream Operations Work

These are replacement consents for flood protection operations along much of its flood plain length from upstream of State Highway One to the coast. Notice was served on 56 parties, with two submissions received. The applicant is currently working through issues with submitters in order to resolve concerns, thus avoiding the need for a hearing.

K R & S M Shaw

After determining the need not to hold a pre-hearing, a hearing was held on 29 August and a decision is expected by the last week of September.

This application is for diverting water from a small tributary of the Mangatarere Stream for the hydro-electricity generation purposes. One submission was received from a neighbouring landowner.

Kintyre Trust

This application is for setting up a medium-sized rendering plant at an existing abattoir at Gladstone. Notice of the application has been served on eight parties and two submissions were received from Rangitaane o Wairarapa and the neighbouring Hurunui-o-rangi marae. A pre-hearing was held on 9 August raising concerns possible odours produced by the operation, and we have requested further information from the applicant to clarify some of these matters such as mitigation of odour effects and operational matters.

4.2 Upcoming consent applications

South Waitohu Stopbank: A proposed 780 m stopbank adjacent Mangapouri Stream in Otaki.

Lincolnshire Cleanfill: A large cleanfill proposed for the Lincolnshire Farm area north of Newlands.

T & T Landfill: An extension (by lifting) to the current landfill in Ohiro Road, Brooklyn.

Westchester Drive Extension: A roading project connecting to the current Mark Avenue extension, north of Newlands.

Overseas Passenger Terminal (OPT): Applications are expected around mid September for a proposed new apartment and public space development at the site of the former OPT in Lambton Harbour.

Puketiro Windfarm: We anticipate applications for a 40-plus turbine windfarm in the Puketiro forest area will be lodged later in the year.

4.3 Other applications

Neptune Power - Tidal Energy Turbine

A proposal for a trial tidal energy turbine to be placed off the South Wellington coast has now been received, and likely to be processed by the time of this committee meeting.

This is the pre-cursor to a supposed 7,000 turbine, multi-billion dollar proposal for the Cook Straight area, as reported recently in the media.

4.4 Department projects

Ministry for the Environment (MfE) investigation of costs of compliance

GW along with three other Councils (Marlborough District, Manawatu District and Wellington City) have participated in MfE's trial investigation of the costs of consent processing for business. The investigation has sought to identify the costs associated with processing consents including application processing costs, consultants and staff costs for applicants and costs imposed by unforeseen conditions. We will be providing feedback on the scope and investigation design to MfE once we have reviewed the final results and outcomes. The trial is expected to lead into a full nationwide study.

4.5 Staff issues

Ange Lenz and Tyro-Baker Underhill, formerly in fixed-term positions in the Wellington Consents and Compliance team, have now gained permanent Resource Advisor roles in the Department following other recent staff movements. This is just reward for their collective hard work and sound performance to date.

Helen Dempster also joins the Wellington Consents and Compliance team. Helen comes to us after stints processing consents at Otago Regional Council and Swindon Borough in England.

| Applicant | Proposal | Date Consent Lodged | Date Submissions Closed | Number of Submissions Received | Pre-hearing Held | Hearing Held | Hearing Committee Members | Date Decision Released | Granted or Declined |
|---|--|---------------------|-------------------------|--------------------------------|------------------|--|--|------------------------|---|
| Masterton District Council | To construct a sea wall at Castlepoint. | 02/06/04 | 09/07/04 | 10 | - | 14-15 March 2005 | Cr Chris Turver Aka Arthur (Iwi) Dr Michael Hilton (Minister's appointee) | 11/04/05 | Granted – under appeal |
| LARO / Flood Protection | To relocate a stopbank and extend the bed of the Ruamahanga River, South Wairarapa. | 16/08/04 | 29/09/04 | 3 | 09/12/04 | 23/03/05 | Christine Foster | 02/05/05 | Granted – under appeal to the High Court |
| A E & S W Benton Partnership | To take groundwater from two bores for irrigation purposes, Battersea, South Wairarapa. | 09/12/04 | 09/02/05 | 9 | 17/03/05 | 11/10/05 | Christine Foster Tony Cussins | 09/03/06 | Declined – under appeal |
| Wellington Marine Conservation Centre 2 | Establish an aquarium at Te Raekaihau Point, Wellington. | 02/05/06 | 07/06/05 | Approx 9000 | - | Commenced on 8 August, completed 7 September 2006. (approx. 13 days) | Helen Tobin Ray O'Callaghan Euan McQueen | 19/10/06 | Granted – Under appeal – awaiting decision |
| Waterfront Investments Ltd | 'Hilton Hotel' building and public space proposal, Queens Wharf, Wellington. | 23/12/05 | 27/02/06 | Approx 1000 | - | Hearing commenced on 3 July, adjourned on 31 July, and closed 8 Aug. | Cr Chris Turver Cr Chris Laidlaw David McMahon Stuart Kinnear Miria Pomare (Iwi) | 19/09/06 | Granted - under appeal |
| WCC Capacity | To discharge treated and disinfected wastewater from the Western WWTP, South Karori, Wellington. | 29/03/06 | 08/05/06 | 14 | - | Hearing held - commenced on 19, 20 and 27 October. | Cr Glen Evans Miria Pomare (Iwi) Byrdie Eyres (Minister's appointee) | 21/12/06 | Granted – under appeal. Mediation commenced on 20 August 2007 – to be re-convened Feb 08. |
| South Wairarapa District Council | To discharge treated wastewater to land and to Donalds Creek, Featherston. | 13/05/97 | | 9 | 12/12/03 | Hearing delayed as applications on hold | | | |

| Applicant | Proposal | Date Consent Lodged | Date Submissions Closed | Number of Submissions Received | Pre-hearing Held | Hearing Held | Hearing Committee Members | Date Decision Released | Granted or Declined |
|---|--|---------------------|-------------------------|--------------------------------|------------------|--|---|------------------------|-----------------------------|
| Stronvar Properties Ltd | Various activities associated with subdivision including discharges of communal waste water, soil disturbance, taking water, and constructing an amenity and treatment dam, Stronvar, Masterton. | 24/07/06 | 15/12/06 | 24 | - | Hearing delayed as applications on hold. | | - | - |
| Palliser Bay Station | To discharge wastewater to land via a communal wastewater treatment system. | 24/07/06 | 28/11/06 | 1 | - | Application on hold – further info required. Likely to be negotiated outcome with no need for hearing. | | - | - |
| Capital and Coast District Health Board | To discharge particulates associated with the use of gas and diesel fired boilers. | 08/06/06 | 31/07/06 | 3 | 18/08/06 | No hearing required. | | - | - |
| Webstar (Blue Star Print Group Limited) | To discharge particulates and other contaminants to air from three heatset lines, driers and thermal oxidisers associated with printing operations, Ngamutawa Rd, Masterton. | 08/02/07 | 22/02/06 | 2 | 8/5/07 | Further investigations into odour concerns currently being undertaken. | | | |
| Staites Drive Developments Ltd, Staites Drive North, Whitby | Various activities associated with subdivision including discharges of sediment-laden stormwater, piping of intermittent streams and damming stormwater in detention dam. | 21/11/06 | 12/01/07 | 6 | - | Scheduled for 3 & 4 May | Cr Chris Laidlaw Cr Margaret Shields | 25/05/07 | Granted – no appeals lodged |

| Applicant | Proposal | Date Consent Lodged | Date Submissions Closed | Number of Submissions Received | Pre-hearing Held | Hearing Held | Hearing Committee Members | Date Decision Released | Granted or Declined |
|---|--|---------------------|-------------------------|--------------------------------|----------------------|---|---------------------------|------------------------|-----------------------------|
| G & W Bugden (O'More Partnership) | To undertake works to construct and operate a cleanfill (including assoc discharges), Judgeford, Porirua. | 12/12/06 | 2/5/07 | 13 | 31/5/07 | To be set once further info received. | | | |
| Hutt City Council (Limited Notified) | To undertake erosion mitigation works in Wainuiomata River, including disturbance and diversion work. | 07/08/06 | 20/10/06 | 1 | 20/12/06 15/02/07 | Parties to consider mitigation options & draft conditions. | - | - | - |
| M B & H F Herrick (Limited Notified) | Replacement consent applications to take groundwater from two bores for irrigation, Taumata Island, Carterton. | 16/05/06 | 8/09/06 | 4 | 24/10/06 | Hearing delayed as applications on hold – applicant undertaking monitoring to further assess effects. | - | - | - |
| Hutt City Council, Marine Parade, Eastbourne (Limited Notified) | Land use consent, water permit and coastal permit associated with works to modify the channel of an unnamed stream, for flood mitigation purposes. | 1/3/06 | 23/1/07 | 3 | 9/3/07 | Expect to be resolved without hearing. | - | 26/07/07 | Granted – no appeals lodged |
| Wellington City Council | To discharge contaminants to land and air from a sludge dewatering plant, Wellington. | 27/4/07 | 13/7/07 | 95 | | On hold pending supply of further information and peer review. Peer review to be submitted end Sept 07. | | | |
| Winstone Aggregates Ltd | To pipe and reclaim four intermittent streams and to discharge contaminants to water from a quarry overburden area, Belmont. | 7/5/07 | 10/7/07 | 24 | 30/8/07 | On hold pending supply of further information. | | | |

| Applicant | Proposal | Date Consent Lodged | Date Submissions Closed | Number of Submissions Received | Pre-hearing Held | Hearing Held | Hearing Committee Members | Date Decision Released | Granted or Declined |
|--|--|---------------------|-------------------------|--------------------------------|------------------|---|------------------------------------|------------------------|-----------------------|
| K R & S M Shaw (Limited Notified) | To divert a tributary of the Mangatarere Stream, including associated disturbance of the bed, to generate hydro-electricity in the Managatarere Valley, west of Carterton. | 23/2/07 | 6/7/07 | 1 | - | 29/8/07 | Cr Sally Baber Cr Chris Laidlaw | | |
| Kintyre Trust (Limited Notified) | To discharge contaminants to air from a rendering plant at Gladstone, east of Carterton. | 28/5/07 | 27/7/07 | 2 | 9/8/07 | Hearing delayed as application on hold – applicant responding to issues raised at pre-hearing meeting and in submissions. | | | |
| Masterton District Council | To undertake various activities associated with the proposed long term upgrade and operation of the Masterton wastewater treatment plant at Homebush, east of Masterton. | 16/5/07 | 1/8/07 | 69 | - | Hearing delayed as applications on hold – further information on a number of matters requested. | | | |
| Skip-E Bins (Limited Notified) | Discharge of contaminants to air associated with the operation of a re-distribution/recycling centre. | 4/4/07 | 7/06/07 | None | No | Not required | | 5/07/07 | Granted No appeals |
| Greater Wellington Flood Protection Dept | To construct structures and undertake works including gravel extraction in the Waitohu Stream and associated stream bed disturbance. | 10/05/07 | 22/06/07 | 2 | | Applicant currently negotiating with submitters. | | | |

| Applicant | Proposal | Date Consent Lodged | Date Submissions Closed | Number of Submissions Received | Pre-hearing Held | Hearing Held | Hearing Committee Members | Date Decision Released | Granted or Declined |
|-------------------------|--|---------------------|-------------------------|--------------------------------|------------------|--|---------------------------|------------------------|---------------------|
| Wellington City Council | Discharge of treated wastewater and intermittent discharge of non treated wastewater to the CMA at Moa Point Wastewater Treatment Plant; and occupation of the seabed by a pipe, discharge to air from Moa Point ventilation system. | 2/07/07 | 15/08/07 | 15 | | Application currently on hold pending supply of further information. | | | |

Mike Pryce
Manager, Harbours

Harbours Department Report – September 2007

1. Harbour navigation aids

The change-over of Barrett Reef buoy was completed as scheduled on Friday 3 August.

All other navigation aids operated satisfactorily.

2. Oil pollution

Five reports of “oil pollution” were reported during the period. One resulted in GWRC co-ordinating and funding the removal of three submerged cars off the Lowry Bay Launching Ramp. Another required an investigation into an extensive oil sheen which drifted in from the sea into Lyall Bay and the third required several members of the Harbours team mitigating oil being spilt into the harbour from a storm water drain at Seaview along Port Road by using dispersant and a sorbent boom.

Three GW staff attended a Field Operators Course in August.

The annual servicing of oil spill response equipment was held on Monday 3 September.

3. Harbour hulks

Just after mid-day on Saturday 11th August, during 75-knot northerlies, the hulks of *James Cook* and *Szap8* broke free from their moorings at Miramar Wharf and went aground on the shoreline nearby. They were both re-floated with CentrePort tug assistance and re-moored by late afternoon. Harbours and CentrePort staff needed to board the vessels in order to make-fast towlines. The removal of considerable quantities of “floatable material” from *Atlantic Elizabeth* was completed. *James Cook* and *Szap8* had all hydraulic and other oils drained from their engine rooms, after which their engine rooms were steam cleaned to remove all oil residues. Similar draining of oils from *Atlantic Elizabeth* has commenced. *Seafire*’s interior was also stripped of “floatable material”, with removal of nets and bulk fuel planned for the near future.

4. Other activities

The Beacon Hill upgrade planning is pending resolution of issues regarding a neighbouring property, which is between the signal station and the channel into the harbour.

An Inner Harbour automatic weather recording system, provided by Centreport, was initially installed in early September. This included some components being installed on GWRC's Front Leading Light structure. The system records wind information from various different berths in the harbour and wind and sea-state information at the Front Lead into a website. Adjustments and modifications are being made from experience gained.

The first Maritime New Zealand Southern North Island Regional Pleasure Boat Safety Forum was hosted in the Council Chambers on 6 February 2007.

Rian van Schalkwyk
Manager, Emergency Management

Emergency Management Department Report – September 2007

1. Civil Defence Emergency Management Group

1.1 CDEM Group Emergency Operations Centre (GEOC)

The Group EOC (GEOC) operating systems and procedures have been redesigned and compiled into individual desk operating manuals that will be used as the basis for modular training in the future. This modular based training was implemented with communications training in August and additional modules are now being developed.

GEOC volunteers continue to attend monthly training sessions on various roles and function of the GEOC. Group Emergency Management Officers (EMOs) often attend training courses facilitated by external training providers or TAs.

GEOC trainer (Chris Killeen) has attended the Weltec training institute and is in the process of obtaining assessors capability which will enable GEOC staff (including volunteers) gain unit standards from the Rapid training package developed by the MCDEM. RAPID stands for Response and Preparedness in Disasters. It is a comprehensive training programme developed specifically to enhance the emergency response capabilities. It is flexible and as it is modular based it can be customised to suit differing needs.

To enhance the training capability of the region a more collaborative approach is required. This has been initiated with Hutt Valley EMO logistics and Planning and Intelligence courses where all EMOs are invited to attend. It is essential that this continues and there may be potential for this to be further developed and utilised. Where there continues to be gaps external training providers may be required such as Canterbury CDEM Group (EOC training) where the Group trainer has attended this course recently and will be applying this knowledge and implementing this in the Wellington region.

All TAs and the Group office realise that training of CDEM staff and volunteers is an ongoing process, and feel that it is improving with the implementation of short courses, and other professional development. EMOs are becoming increasingly aware of the training needs and reacting accordingly, by working together and sharing resources.

1.2 CDEM Group Work Programme

The progress on our work programmes is as follows:

1.2.1 CDEM Group Recovery Plan

To ensure that the Group has robust methods and relationships in place for providing coordinated efforts and processes to effect the immediate, medium and long-term holistic rehabilitation of a community following a disaster.

Progress is continuing on the draft CDEM Group Recovery Plan with the assistance of local Territorial Authority CDEM Officer.

The scope of the plan has been determined with a staged approach being adopted to take into account the complexities of a large scale earthquake event which requires a whole of government approach to address recovery planning.

1.2.2 Hazard information review

To ensure that updated and relevant information about all hazards are available, current, accessible and communicated to all audiences in a way that enables informed decision making.

Several meetings and workshops have taken place over the last few months to address the hazard information review project.

The project is now completed and a very comprehensive report to this regard has been compiled by our hazard analyst, Dr Iain Dawe.

1.2.3 CDEM group reconnaissance plan review and testing

Our draft plan makes provision for the initial reconnaissance needed to be carried out at a regional level to ensure efficient use of resources and that essential information is gathered and conveyed to the parties who need to use it.

During Exercise Capital Quake (14 & 15 November 2006) it became apparent that several other organisations (for example Transit New Zealand) were also doing reconnaissance work for the same areas that our Group Reconnaissance Plan covered.

We have met with these organisations to work out exactly who will play what role to avoid duplication. The draft Plan is now in the process of being amended accordingly.

We are also planning to take part in an exercise that will be run by Transit on 22 November to test these new arrangements and amendments to the Group Reconnaissance Plan.

1.2.4 Debris disposal arrangements

To ensure that adequate arrangements are in place for the effective disposal of debris during emergencies.

Chris Killeen from our office is working with the Institute of Geological and Nuclear Sciences (GNS) on this project. A full report will be ready early in 2008.

1.2.5 Rural fire management alignment

To ensure that there is synergy between the CDEM Group and rural fire management structures.

This project has not been started yet but will be led by the New Zealand Fire Service.

1.2.6 Emergency management agency communications system implementation

To ensure that adequate arrangements are in place for vital emergency management agencies to communicate effectively during any emergency.

This project has been completed.

1.2.7 CDEM Group Public Education Strategy

To develop a strategy that will address ways of communicating hazard information and increase community preparedness over the next three years.

The draft National Public Education Strategy has been reviewed and a National Programme will be developed in the next few months. These documents are essential as the Group Public Education Strategy will be aligned to both the National Strategy and Programme. We are currently consulting with the Territorial Authorities about current initiatives and possible future directions. We have also completed the community preparedness survey 2007 which will be used as a pre-measure of the Group Public Education Strategy's effectiveness as it will be repeated again in three years.

1.2.8 Audible warning systems review

To develop effective ways for alerting the public regarding tsunami, storm, weather related (rain, hail, snow, wind), and fire danger.

The project has started. A working group has been formed and several meetings have already taken place.

1.2.9 Watercourse review and mitigation programme development

Identify those watercourses that have the potential to cause an emergency and thereafter implement appropriate mitigation measures.

This project has not been started yet.

1.2.10 Tsunami evacuation planning

To ensure that there are plans in place to effectively manage regional evacuations.

The project has started. A working group has been formed and the group is meeting on a monthly basis. Reference material has been prepared and the 'evacuation plan' is now in the process of being written.

1.2.11 Audit of EOCs

To ensure that response management facilities (EOCs) are capable of providing effective response and recovery management.

Discussions have been held between the Ministry of CDEM and the CDEM Group to discuss the way forward.

1.3 Public education initiatives

The Civil Defence Emergency Management Act 2002 (the Act) requires each CDEM Group to promote and raise public awareness of hazards and risks and the Act itself (s.17 (1) (a) (g)).

1.3.1 Disaster Awareness Week 2007

As with previous years the CDEM Group, in conjunction with the Ministry of Civil Defence Emergency Management (MCDEM), will run a campaign during Disaster Awareness Week (from 8-14 October 2007).

The objective of Disaster Awareness Week is to raise the awareness of hazards in the Wellington Region and persuade individuals and communities to adopt preparedness behaviours. This year the campaign centres on the theme "*My family will survive a disaster...Will yours?*". This theme has been used with success in the Hutt Valley and the CDEM Public Education Group decided to adopt this theme for Disaster Awareness Week. This campaign will promote the need to prepare and the ability to survive a disaster, attempting to reduce the influence of fatalism and apathy as barriers. Taking on an all hazard approach, we will show that the three key messages will aid in survival across all hazards.

This campaign centres on the railway station event held on International Disaster Reduction Day (Wednesday 10 October), and a media campaign in The Dominion Post.

The railway station event will involve handing out 'goodie bags' to morning rush hour commuters between 7am – 9am. Emergency Services, MCDEM, Victoria University Rescue Team, Group and local CDEM officers will also be present. The 'goodie bags' are a new initiative this year and include:

- Fridge Magnets – A picture frame (insert their family picture) with the three key messages (store emergency water, emergency survival kit and household emergency plan).
- Scenario Cards – Identifies the likely scenarios and the consequences for the six hazards which pose the highest risk to the region. The scenario cards also reinforce the three key messages. The scenario cards are going to be used all year round and may be expanded over time to include more hazards.
- Other Information – Includes *Household Emergency Plans*, 'Are you prepared?' booklet and 'Get ready, Get Thru' pamphlets.

The media campaign in The Dominion Post will feature three ¼ pages and a full page on Saturday during Disaster Awareness Week. The Group has received significant support from The Dominion Post by subsidising this advertising by nearly \$20,000. These advertisements will focus on the difference between a prepared family and an ill prepared family.

1.3.2 Yellow Pages

The Wairarapa Yellow Pages information was updated for the 2007/2008 year and these changes are now in the recent publications.

The Wellington Yellow Pages was completely remodelled to incorporate the Household Emergency Plan, and now encompasses the four R's, Reduction, Readiness, Response and Recovery. These changes are due to be printed later this year and will feature in the 2007/2008 Yellow Pages. These changes will be implemented in the Wairarapa edition of the Yellow Pages for the 2008/2009 year.

1.3.3 Elements

The Greater Wellington publication 'Elements' is distributed quarterly and CDEM continues to contribute to each edition. The last two editions included preparedness information across multiple hazards.

We intend to continue the focus on CDEM in issues to come, with the next issue focusing on Disaster Awareness Week.

1.3.4 Are you Prepared? booklet

The 'Are you Prepared?' booklet continues to be well received by the public and has continued to be funded by the advertisers featured in the booklet.

A reprint of 10,000 was commissioned in August 2007, and it is likely to be done so again in February 2008.

1.3.5 Household emergency plans

The household emergency plans continue to be very successful and provided the basis for the Household Emergency Plan and Checklist recently produced by the

Ministry of Civil Defence and Emergency Management. A reprint of these is likely during the 2007/2008 financial year.

1.3.6 Hazard fact sheets

The collection of Hazard Fact sheets continue to be reviewed and updated when a reprint is required. The storing emergency water fact sheet is currently in the process of being re-branded as a Wellington Region Civil Defence and Emergency Management Group publication. We are also in the process of developing household emergency plan and business preparedness fact sheets, which will also be branded as a Group publication.

Public education continues to be an area of substantial focus, with a great deal of education work being conducted in the Region, both as a Group and as individual authorities. This report highlights the significant initiatives.

The Group Public Education Strategy is going to provide direction for the next three years which will enable both the Group and local authorities to continue to develop and administer more effective ways that enable the public to be more informed and prepared.

1.4 Other activities and initiatives

1.4.1 Controllers and Recovery Managers' Course

The Co-ordinating Executive Group (CEG) of the CDEM Group at its 2 April 2007 meeting endorsed the proposal to conduct a Controllers' Training Course and directed all controllers and recovery managers to take part.

A residential course was prepared and conducted for the Group from 16 – 18 August 2007 at the Cophorne Hotel Masterton.

Thirty-nine people in total attended the course. Twenty-two controllers and recovery managers from within the Wellington Region and one from the Hawke's Bay Regional Council, eleven Emergency Management Officers, two Emergency Advisors from the Ministry of CDEM, the National Manager from Emergency Management Academy of NZ and two Lifelines Co-ordinators from the Kestrel Group.

The two day training course was based on the well proven, 'experiential' (hands on) style of training.

The first half day of the course created an understanding of 'declarations' and controllers' powers, lifelines and welfare arrangements in the Group as well as the roles of other CDEM Groups in supporting the Wellington CDEM Group during large scale emergencies.

The controllers were then tasked to put this background into practice through four tabletop exercises conducted during the rest of the period. The exercises focused on a chemical spill, a tsunami, an earthquake and flood scenarios in

different parts of the region, bringing the reality of these scenarios to the controllers' doorstep.

The purpose and design of the course was to provide Local Controllers and Recovery Managers a practical introduction to these roles.

An evaluation by course participants agreed unanimously that this was achieved and 75% of participants rated the course overall as high as 85%.

Some useful feedback comment was recorded which will be applied in "fine tuning" the course for future use. Given that this course was being conducted for the first time and had not been tested, its designers in particular, and the EMO's in general, were more than satisfied with the outcome.

A clear and salutary message came from both the Ministry of CDEM and the Emergency Management Academy of NZ that this course could be developed as a Controller qualification course.

Whereas no clear frequency of training could be obtained from participants, they supported the need for ongoing training.

2. Environment

2.1 Earthquake reports:

Since preparing the last report for the Environment Committee meeting 33 reports for earthquakes bigger than 3 on the Richter Scale were received from GNS. The following earthquakes were felt in the Wellington Region:

- August 16 2007, Magnitude 4.4, 60km deep, 30 km north-west of Picton
- August 15 2007, Magnitude 4.9, 150km deep, 40 km north of Nelson.
- August 7 2007, Magnitude 3.4, 30km deep, 10 km east of Woodville.
- August 7 2007, Magnitude 3.1, 20km deep, 20km south-west of Wellington

2.2 Special Weather Bulletins

Fourteen Special Weather Bulletins (6 for heavy rain, 7 for strong wind and 1 for snow) were received since the last meeting on 16 August 2007. No serious issues arose from these events.

2.3 Communications

Weekly tests of the radio communications network are being carried out. The satellite network is being tested on a monthly basis.

Both systems are well maintained and regular checks are carried out on the battery and generator backup systems, the re-positioning of antennae where necessary (high winds cause antennae to turn out of position) etc.

Richard Waddy
Manager, Environmental Support

Financial Position: 31 July 2007

1. Operating Results

We are pleased to report the Division's operating results for the period ended 31 July 2007.

| Environment Division | | | | | |
|-----------------------------------|------------------|------------------|--------------------|------------------|--------------------|
| Summary of Income Statement | | | | | |
| For the Period Ended 31 July 2007 | | | | | |
| | Year to date | | | Full Year | |
| | Actual \$000s | Budget \$000s | Variance \$000s | Budget \$000s | Forecast \$000s |
| Rates | 828 | 828 | -- | 9,941 | 9,941 |
| Other Revenue | 189 | 187 | 2 F | 2,233 | 2,233 |
| Total Revenue | 1,017 | 1,015 | 2 F | 12,174 | 12,174 |
| Less: | | | | | |
| Direct Expenditure | 801 | 844 | 43 F | 10,724 | 10,724 |
| Indirect Expenditure | 150 | 132 | 18 U | 1,560 | 1,560 |
| Total Operating Expenditure | 951 | 976 | 25 F | 12,284 | 12,284 |
| Operating Surplus (Deficit) | 66 | 39 | 27 F | (110) | (110) |

2. Surplus

The Division's finances are satisfactory with the operating surplus and for the period at \$66,000, compared to a budgeted surplus of \$39,000.

The result translates to a net favourable variance of \$27,000, comprising increased revenue of \$2,000, and expenditure at a lower level of \$25,000.

3. Revenue

Total Revenue came in at \$1,017,000, which is slightly higher, some \$2,000, than our budget target of \$1,015,000.

4. Total Expenditure

The Division's total expenditure at \$951,000 is some \$25,000 (or 2.3%) less than our budget.

The main reasons for this variance are:

- Personnel costs were under budget by \$20,000. Staff movements during the period are the main cause of the underspend.
- Materials Supplies and services were over budget by \$26,000

Legal fees from appeals on some consents is the main cause of the increased spend. In particular, the Hilton Hotel and Wellington Marine Education Centre consents attracted some significant costs on appeal.

- Consultant costs were under budget by \$31,000.

At this stage, the spend is slightly lower than our budget because a number of projects are yet to commence.

5. Capital expenditure

Similarly, the capital expenditure programme (after asset disposals) is presently slightly lower, at \$30,000, than our budgets. We expect that this situation will reverse in the coming months.