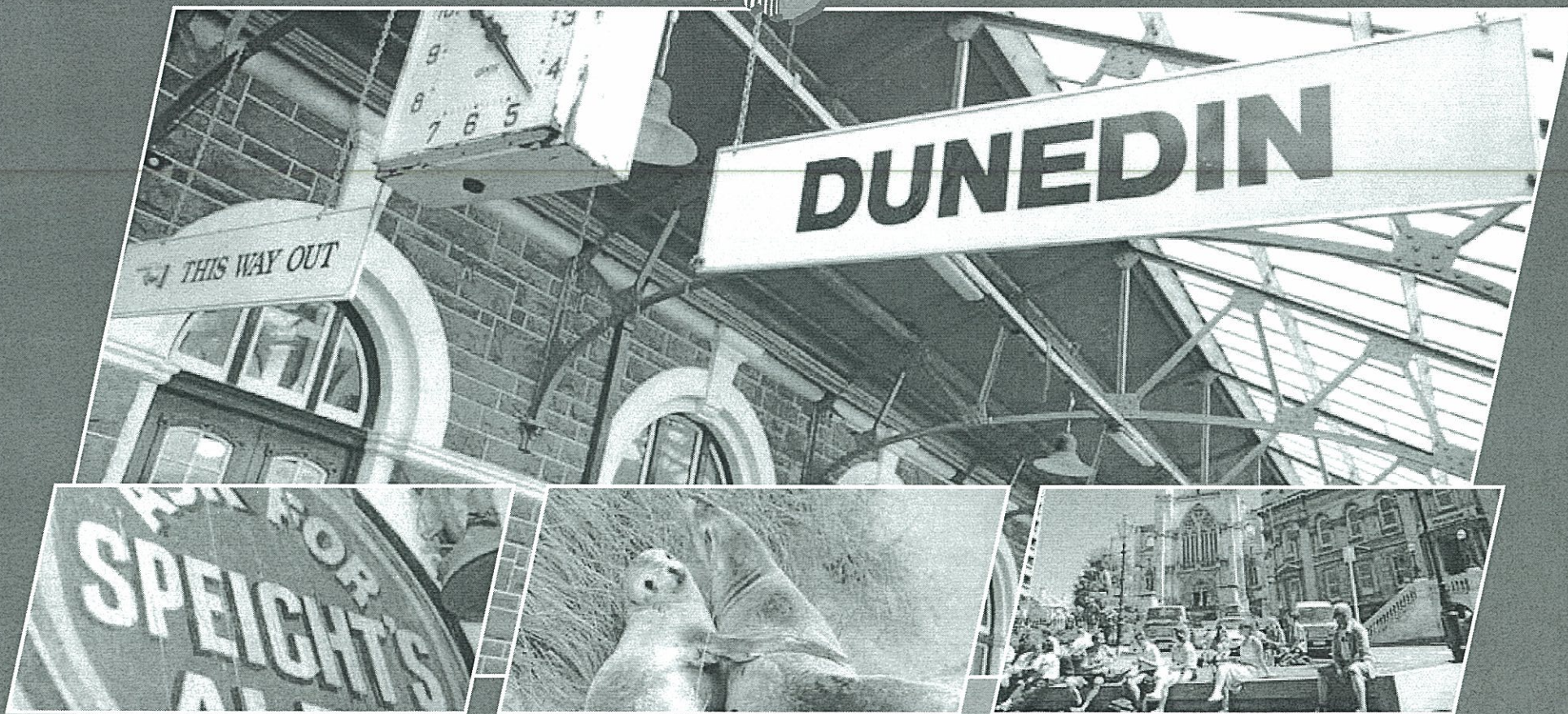


RMLA CONFERENCE

25 > 27 SEPTEMBER 2008 > DUNEDIN

SOUTHERLY CHANGE



Resource Management Law Association
of New Zealand Inc.

www.rmla.org.nz

Registration Brochure

Register online www.rmla.org.nz

RMLA would like to thank the following sponsors for their support:

Keynote Speaker Sponsor

BELL GULLY

Conference Dinner Sponsor



Lane Neave LAWYERS

Associate Sponsors



Cyber Café Sponsor

DuncanCotterill
LAWYERS

Conference Satchel Sponsor



Barristers, Solicitors & Notary Public

WYNN WILLIAMS & CO
BARRISTERS · SOLICITORS

Brookfields
LAWYERS

Welcome Reception Sponsor

RUSSELL McVEAGH

Southern Tastes Sponsor

ANDERSONLLOYD
LAWYERS

Namebadge Sponsor

galloway cook allan
LAWYERS
incorporating Hale Hunter Young



TRAFFIC DESIGN GROUP

Delegate Gift Sponsor



ROSS DOWLING MARQUET GRIFFIN
BARRISTERS AND SOLICITORS

goodmansteven
tavendalereid

▲ COMMERCIAL, PRIMARY INDUSTRY AND RESOURCE MANAGEMENT LAWYERS

Contents

Invitations	3
Destination Dunedin	4
Conference Venue	5
Conference Theme	6
Keynote Speaker Profiles	7
Conference Programme	10
Workshop Sessions	12
<hr/>	
Field Trips	14
Special Interest Group Meetings	16
Social Events	17
Registration Information	20
Subsidies	21
RMLA Membership Information	21
Accommodation	22
Dunedin Map	23
General Information	24



Invitation from the President of the Resource Management Law Association



It is my very great pleasure, as the first South Island President of the RMLA, to invite you to attend the RMLA's sixteenth Annual Conference, which for the first time is to be held in Dunedin. This is a double pleasure for me as I began practice in Dunedin. I well know Dunedin's well deserved reputation for hospitality and have no doubt that delegates to this year's conference will be warmly welcomed.

The theme is "Southerly Change", recognising not only the present feeling of change in New Zealand, but the significant alterations that resource management has undergone in the last decade and where that is taking us. Our increasing

awareness of global connections, combined with the need to act on a local basis, requires us to challenge where we stand when deciding what is sustainable management.

The keynote speakers secured for the conference ensure that the opportunities that this Southerly Change represents, as well as the risks inherent in all change, will be thoroughly addressed.

I invite you to partake of southern hospitality and enjoy the stimulating environment that this year's conference programme, both socially and professionally, will provide. I look forward to seeing you in Dunedin.



Camilla Owen
President, RMLA

Invitation from the Mayor of Dunedin



All host mayors come up with the same tired old invitations to sample the unrivalled attractions of their cities when extending civic welcomes.

Not this one!

We want you to be excited and motivated by the challenging and informative speakers, engaged and uplifted by the level of debate and then return home ready to bore the pants off your colleagues over morning tea with tales of your wonderful Dunedin RMLA conference experiences!

And if, and only if, there's also time to enjoy the many cultural, recreational and retail activities available within an easy stroll of the conference venue - so much the better.

I want your stay to be stimulating and enjoyable and above all memorable – and I want you to come back soon.

Welcome to Dunedin.



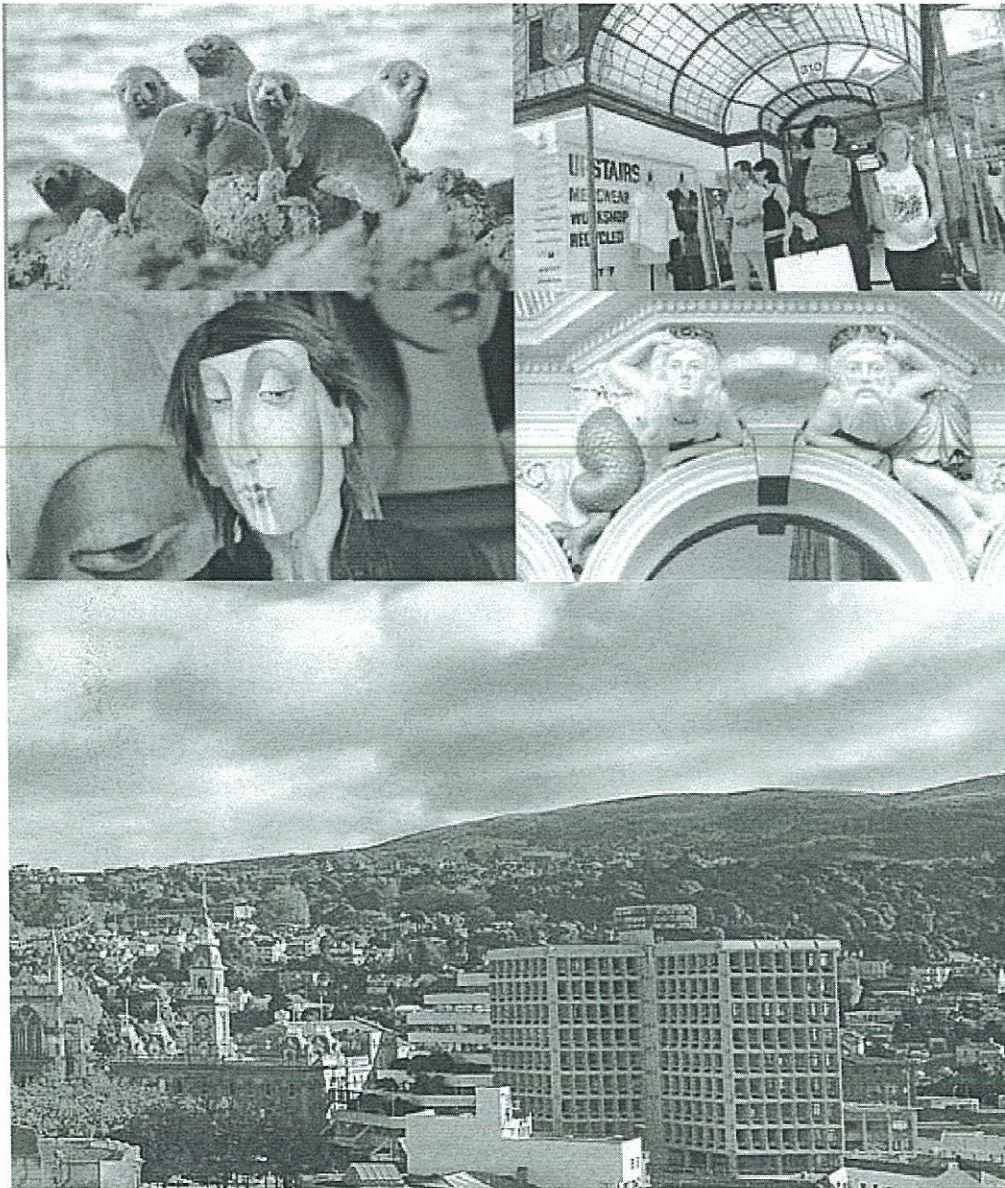
Destination Dunedin

As the principal city of Otago, and the largest city area in New Zealand, Dunedin is renowned for its spectacular beauty. This friendly city has a compact urban area and a population of 130,000 and is also the financial and commercial hub of a region where a thriving economy and a range of employment and investment opportunities make Dunedin an exciting place to live and work.

Delegates and partners attending the Resource Management Law Association Conference can take advantage of the city's accessible recreational and cultural venues, fashionable shopping and first-rate entertainment. Dunedin has a rich heritage of beautiful Edwardian and Victorian architecture which is the perfect complement to the vibrant restaurant and café scene, art galleries, museums, live club music and professional theatre and music.

The Octagon is busy with cafés and restaurants and theatres all under the watchful eye of the City's famous statue of poet Robbie Burns. Handy to the centre of town are numerous chic fashion boutiques.





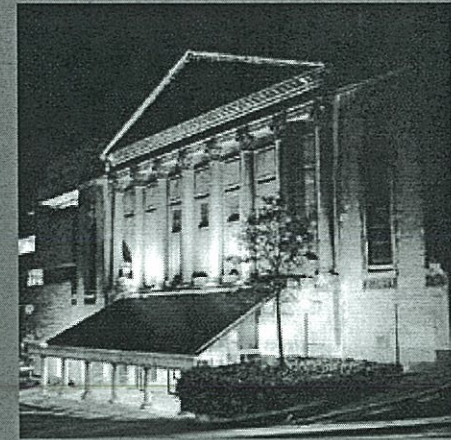
Conference Venue

Dunedin Centre

Sited in magnificent architectural splendour, the Dunedin Centre occupies a central position in the Octagon at the very heart of Dunedin.

An historic, classified heritage building, with an old world charm hard to find anywhere else in New Zealand, the Dunedin Centre is ideally located in the heart of Dunedin, adjacent to the Octagon, St Paul's Cathedral, the Visitor Centre and Dunedin's main shopping areas.

The Dunedin Centre is the conference venue, housing the registration desk, keynote speaker sessions, workshop sessions, Welcome Reception (*sponsored by Russell McVeagh*) and Conference Dinner (*sponsored by Lane Neave*).





RMLA CONFERENCE

25 > 27 SEPTEMBER 2008 > DUNEDIN

SOUTHERLY CHANGE

Conference Theme

Based in the south, the theme for this year's conference is "Southerly Change". Southerly Change is not a weather forecast, it is a phenomenon. It is a metaphor for resource management over the last decade. Along with death and taxes, change is one of the few certainties of life. Managing and adapting to change lies at the heart of the Resource Management Act. We seek not to prevent it, but instead to find opportunities to live and thrive with it. And we are thriving. This conference will be valuable to everyone who looks for opportunities to use our natural and cultural heritage in a rapidly changing environment.

Otago has played an integral part in economic and resource management change in New Zealand through the years, from the goldfields and consequent development of the now famous heritage buildings in Dunedin and Oamaru in the Nineteenth Century, to the Clyde Dam in the 1980s and the moves to establish windfarms in the new Millennium.

The conference will explore the impacts of changing economic demands and opportunities, and increasing levels of scientific understanding. We will question whether and how the changes to our water resources, landscapes, ecosystems and cultural heritage resources can be sustainably managed. Delegates will be challenged to consider the appropriateness of the current legislation and debate how it should continue to evolve and adapt.

Changing energy demands and technologies, evolving global and local responsibilities, depleted natural resources, cutting edge statutory and non statutory tools, new frontiers . . . these are just some of the topics that will be explored with the objective of increasing our understanding of how we can best implement environmental law to thrive in a changing world.



Keynote Speaker Profiles



Prof Joseph Sax

Joseph L Sax is the James H House & Hiram Hurd Endowment Professor, emeritus, at the University of California (Berkeley). From 1966-1986 he was the Philip Hart Distinguished University Professor at the University of Michigan, and prior to that taught at the University of Colorado and practiced law in Washington, DC. Sax served as a visiting professor at the University of Paris I (Panthéon-Sorbonne) and Stanford University among others, and has lectured at the Ecole des hautes études en sciences sociales (Paris).

In 1994-1996 he served as Counselor to the US Secretary of the Interior, where his responsibilities included federal water resource policy, endangered species law enforcement, and property rights legislation. At that time he represented the U.S. on a water delegation to Turkey, and consulted on water and environmental provisions for the new constitution for South Africa.

He has taught environmental law, water law, public land law, and property rights since 1962. Sax is the author of *Defending the Environment* (1970), *Mountains Without Handrails* (1980), and *Playing Darts with a Rembrandt* (2000); and co-author of *Legal Control of Water Resources*, 4th edition (2006). He is a contributing author to numerous books, and has written more than 150 articles in scholarly journals.

Professor Sax is a graduate of Harvard College and the University of Chicago law school. He holds an honorary doctor of laws degree from the Illinois Institute of Technology. He is a Fellow of the American Academy of Arts and Sciences; and was a Fellow at the Center for Advanced Study in the Behavioral Sciences, at Stanford.



Dr Suzi Kerr

Suzi Kerr has been Director and Senior Fellow of Motu Economic and Public Policy Research since November 1998 when she returned to New Zealand after an extensive period of study and work in the US.

She has been a visiting scholar at Resources for the Future (USA), Victoria University and, from January to August 2001, was a visiting scholar at the Joint Centre for the Science and Policy of Global Change at the Massachusetts Institute of Technology in Boston, USA.

Her current research work empirically and theoretically investigates domestic and international emissions trading issues with special emphasis on land use and climate change in both the tropics and New Zealand, domestic carbon permit market design, nutrient trading in Lake Rotorua, and the New Zealand Fisheries Individual Transferable Quota system. Her work involves theoretical analysis, simulation modelling, econometric analysis and policy design. She works closely with researchers from several Crown Research Institutes through a collaborative network, EcoClimate.

Over the last 18 months she has led a project that designed a prototype nutrient trading system for the Lake Rotorua catchment, a project funded by Environment Bay of Plenty with support from MAF and MFE and with considerable assistance from a group of dedicated local stakeholders through a 'study group' facilitated by CommonGround, as well as work by NIWA, and Chapman Tripp. This project is now moving into a phase of simulation modelling as well as political assessment and implementation.

Kindly Sponsored by **BELL GULLY**



Justice Fogarty

John Fogarty LLB (Hons) Canterbury, LL.M Toronto. He studied Ontario Planning Law, as part of his LL.M studies.

He practised in Christchurch first in the firm of Weston Ward and Lascelles who were at that time the solicitors for the Christchurch City Council. From about 1975 through to 1985 he regularly appeared for the Christchurch City Council before the Town and Country Planning Appeal Board and later the Planning Tribunal. After he went to the bar in 1985 he appeared less regularly for the Christchurch City Council and on occasions for the Canterbury United Council and the Canterbury Regional Council until the early 1990s.

He was chairman of the New Zealand Law Society Legislation Committee at the time that the RMA as a bill went through the House of Representatives and was one of the presenters of the submissions of the NZLS to the Select Committee.

Before his appointment to the High Court bench in 2003 he was a member of the litigation team entrusted with the appeals against the Christchurch City District Plan.

He regularly hears appeals from the Environment Court on questions of law.





Judge Newhook

Appointed an Environment Judge in August 2001, Judge Laurie Newhook, graduated from Auckland University with an LLB(Hons) in 1972 and was admitted to the Bar the same year. From 1976 he was a partner of law firm Brookfields and antecedent firms. He practised in resource management, local government and general litigation. The general litigation component had an emphasis on land, maritime matters, construction law and mediation/arbitration work.

In the areas of planning, resource management and local government he acted for councils, landowners, developers, iwi, community groups and environmental groups. The Judge is an Associate of the Arbitrators and Mediators Institute of New Zealand and a member of the Resource Management Law Association.



Professor Alexander Gillespie

Professor of Law at Waikato University, Al Gillespie completed his LLB and LLM (Hons) at Auckland, and PhD at Nottingham. He has been the recipient of fellowships from Rotary, Fulbright, Rockefeller and the NZ Law Foundation and has written eight books on international environment law. Al was the rapporteur for the World Heritage Convention, and co-led the NZ delegation to the 2007 WHC meeting in Christchurch NZ.



Prof Hans Schreier

Hans Schreier is a Professor at the Institute for Resources and Environment at the University of British Columbia in Vancouver, Canada. He is an expert in watershed management and his research focuses on land use impacts on water, water pollution, innovative stormwater management, water conservation and the impact of climate change on water supplies in mountains.

Dr-Schreier has worked extensively on water problems in the developing world and in Canada. He worked on watershed projects in the Himalayas (Nepal, Bhutan, China), the Andean Mountains (Bolivia, Peru, Ecuador, Colombia) and the Rocky Mountains in Canada. He is a program leader of the Canadian Water Network, National Centre of Excellence Program, and has initiated programs focusing on non-point sources of pollution, cumulative effects, and source water protection.

In 1996 he received the International Development Research Centre (IDRC) award for significant contribution to the world of science in the developing world, and was granted a senior Sabbatical fellowship by IDRC (1999-2000).

In 2004 he received the "Science in Action Award" by the United Nations International Year of Fresh Water, Science, Education and Conservation Award for outstanding work in making watershed management knowledge and innovative, cost effective applications possible in Canada and Developing Countries.

Over the past 7 years, Dr. Schreier's team has developed a WEB based Certificate program in Watershed Management comprising of 5 graduate level courses that cover all aspects of water management. These courses are open to graduate students and professionals from around the world.



John Haydon

John Haydon has over 31 years experience as an Environmental Lawyer. John established the Environmental Law Roundtable of Australia and New Zealand. Holding a law degree from the University of Queensland; a Certificate in Public Participation (IAP2), John is a trained mediator and a Fellow of the Salzburg Seminar on Negotiation Theory and Practice in Environmental Disputes, and Certified Environmental Practitioner through the Environment Institute of Australia and New Zealand.



Janet Crawford

Janet L Crawford has a Masters in Public Administration from the John F Kennedy School of Government (Harvard University) concentrating on ECR and environmental economics. As a member of the New Zealand Planning Institute since 1976, Jan conducts training for local authorities, teaches at universities, mediates disputes, and facilitates public policy dialogues and consultation. Since 1995 Jan has been a member of the *Planning under Co-operative Mandates* collaborative research team lead by The University of Waikato. The PUCM team has studied plan quality, implementation and outcomes under the RMA and long-term council community planning under the LGA 2002.



Conference Programme

Thursday 25 September 2008

- 12.00 – 6.00pm Conference registration
- 1.45 – 4.00pm Special Interest Group Meetings
- National RMA instruments and call-ins – What's happening?
 - Climate change SIG discussion
- 5.00 – 7.00pm Welcome Reception
Kindly sponsored by Russell McVeagh

Friday 26 September 2008

- 7.30am – 4.30pm Conference registration
- 8.30am Karakia
- Conference opening – Mayor Peter Chin
- Our precious water resources: learning from the past, securing the future**
Prof Joseph Sax
- 10.30am Morning tea
- 11.00am **A prototype nutrient trading system for managing water quality**
Dr Suzi Kerr
Kindly sponsored by Bell Gully
- Giving effect to values in statutes**
Justice Fogarty
- Climate change and the RMA**
Judge Newhook
- 1.00pm Lunch
- 1.45pm **From the Galapagos to Tongariro, recognising and saving the most important places in the world**
Prof Alexander Gillespie
- 2.45pm Afternoon tea
- 3.00pm **Workshop sessions**
- Sustainable building and affordable housing
 - Changing styles of management
 - Heritage – out with the old, in with the new?
 - Changing with the times – environmental compensation and biodiversity offsets
 - Onwards and upwards – case law and best practice updates
- 4.30 – 7.00pm Southern Tastes Function
Kindly sponsored by Anderson Lloyd Lawyers

Saturday 27 September 2008

7.30am – 5.30pm Conference registration

8.30am **Innovative approaches for the emerging water challenges**

Prof Hans Schreier

Environmental conflict resolution: Negotiated rulemaking and other third party facilitation methods

John Haydon and Janet Crawford

10.00am RMLA Annual General Meeting

10.30am Morning tea

10.45am **Workshop Sessions** (*repeat*)

- Sustainable building and affordable housing
- Changing styles of management
- Heritage – out with the old, in with the new?
- Changing with the times – environmental compensation and biodiversity offsets
- Onwards and upwards – case law and best practice updates

12.15pm Lunch

Field Trips

12.30pm • Gold rush – past, present, future

• Trains and plains

Delegates attending the above field trips will be provided with a lunchbox

1.30pm • Our industrial heritage

• Orokonui Ecosanctuary

• Peninsula experience

• Contrasting castles

• Not just another coastal erosion trip

7.00pm – midnight Conference Dinner

Kindly sponsored by Lane Neave

Dr Suzie Kerr kindly sponsored by

BELL GULLY

Welcome Reception kindly sponsored by

RUSSELL McVEAGH

Southern Tastes Function kindly sponsored by

**ANDERSONLLOYD
LAWYERS**

Conference Dinner kindly sponsored by



LANE NEAVE LAWYERS

Workshop Sessions

Friday 26 September 3.00 – 4.30pm

Saturday 27 September 10.45 -12.15pm

You are able to attend one workshop session each day, please indicate your preferred workshop sessions when you register.

Sustainable building and affordable housing

There can be little doubt that housing in New Zealand must become more energy efficient and environmentally sustainable in this changing era, but they must also remain affordable. This workshop considers how these potentially conflicting environmental and social goals might be achieved. Should individual landowners and market forces be left to their own devices or is greater intervention by both central and local government required?

Speakers:

Lois Easton is a Research Team Leader at Beacon Pathway Ltd, a research consortium that's working to find affordable, attractive ways to make New Zealand homes more sustainable.

Lauren Semple is a partner at Anderson Lloyd Lawyers specialising in large scale urban development projects and has been involved in submitting on the Queenstown Lakes District affordable housing plan change.

Alan Dippie is an urban developer and was involved with the working party in Queenstown addressing affordable housing.

Changing styles of management

It is a continual challenge to find the best tools to both measure effects and manage use of the environment. This workshop will focus primarily on water, and range widely over the different ways in which effects can be assessed and managed. The instruments and techniques that will be examined will include industry guidelines, non statutory guidelines, management plans, adaptive management and others.

The challenge for practitioners has always been, and will continue to be, how to identify and then use these tools in their correct context. Given this challenge, this workshop will explore the applicability, or otherwise, of existing and new tools utilised in New Zealand. One particular area of discussion revolves around science and its role within the resource management area, including how science can and cannot be used. Potential and evolving tools for addressing cultural issues will also be discussed. Finally, the practicability and effectiveness of such tools will be traversed.

Speakers:

Dr Mike Fitzpatrick (Golder Associates (NZ) Ltd) will look at how science can be used in Resource Management, and will examine how guidelines such as the ANZECC guidelines should be used.

Dr Gail Tipa (Ngai Tahu) will explore control mechanisms for cultural issues.

Sheila Watson (Environment Court Commissioner) will address the practicality, or otherwise, of various control mechanisms.

Heritage – out with the old, in with the new?

This workshop will explore the various ways in which heritage can become a resource management issue. Issues to be covered will include natural heritage, cultural landscapes and historic heritage. Heritage areas, sites and buildings go through different reincarnations and from time to time are given varying recognition and importance under environment legislation.

For anyone with an interest in heritage, this workshop is a must!

Speakers:

Dr Janet Stephenson is a planner and Senior Lecturer at the University of Otago and will focus on the role of natural and cultural heritage. Dr Stephenson has an interest in how and why heritage landscapes are valued by people and communities and has developed a conceptual framework for understanding cultural values in landscapes. This has relevance to planning and also to how disciplines and communities might work together to achieve a more integrated understanding of landscape.

Jackie Gillies is a heritage architect based in Queenstown. She will give practical examples of her work in this area, in particular focusing on the adaptive reuse of heritage buildings.

Judge Jeff Smith is an Environment Court Judge. He will comment on the role of the Court, and provide examples where the Court has resolved cases where heritage has been the point of contention.

Changing with the times – environmental compensation and biodiversity offsets

New technologies, demands and expectations are helping drive the evolution of techniques to avoid, remedy and mitigate effects on the environment. The tools of environmental compensation and biodiversity offsets are at the cutting edge in this regard, and are gaining a foothold in the toolbox of ways in which effects can be mitigated. This workshop will cover the legal and policy basis both in New Zealand and other individual countries for the application of these evolving tools as well as the global application by the Business and Biodiversity Offsets Programme, and the response it received at May 2008 UNEP Conference of the Parties to the Convention on Biodiversity. It will report on the practicalities of applying the concepts to date in New Zealand, as well as exploring a counterpoint on the disadvantages and potential weaknesses of using these mitigation techniques.

Speakers:

Mark Christensen is a partner at Anderson Lloyd Lawyers.

Mark Pizey is Solid Energy New Zealand's National Environmental Manager.

Dr Susan Walker is an ecologist in the Biodiversity and Conservation team at Landcare Research.

Onwards and upwards – case law and best practice updates

This workshop will present an update of and commentary on the leading developments in environmental case law, along with the progress made towards implementing best practise in the application of the RMA.

Speakers:

Helen Atkins (DLA Phillips Fox)

Stuart Ryan (Hesketh Henry)

Sarah Myhill (Ministry for the Environment)

Field Trips

Saturday 27 September, 12.30 – 5.30pm

You are able to attend one field trip, please indicate your preferred field trip when you register.

All trips will depart from outside the Dunedin Town Hall, Moray Place.

Our industrial heritage



Take a walk along Princes Street to the Exchange, the former commercial heart of Dunedin. Head up Rattray Street to Speight's Brewery, which has been a working brewery, at this site for over 130 years. Once there, the group will be divided into smaller groups to take the Speight's Heritage Tour. This will include a visit to the working brewery, and gaining some insight into the evolution of the processes that surround the manufacture of the South's preferred amber drop.

At the conclusion of the tour, visit the Speight's Lounge, where one of the Brewing Team will discuss the issues facing the operation today, including those resulting from the changing resource management environment, which include continuing to run a profitable brewing operation within a heritage building, discharges to air and groundwater takes.

Who knows – there may even be time for sampling some of the produce...

Finally, as there are a considerable number of stairs to descend on this tour, it is recommended that flat shoes are worn.

Orokonui Ecosanctuary

The Orokonui Ecosanctuary is located near Waitati about 20 minutes north of Dunedin. Orokonui covers a habitat range from coastal estuary through to nationally rare cloud forest on the slopes of Mt Cargill. The Ecosanctuary aims to establish a New Zealand forest ecosystem where native flora and fauna will be re-established in a pest free environment behind a 10km long 1.9m high pest-exclusion fence that stretches around the entire sanctuary.

The ecosanctuary is the result of the ongoing efforts of the Otago Natural History Trust, which has been involved in environmental and conservation work around Otago since 1983. The Trust now focuses its activities upon the Ecosanctuary. Next on the agenda is the construction of a visitor's centre, for which resource consent was obtained early this year.

Delegates will travel to the Ecosanctuary and hear from Dunedin based ecologist Dr Ralph Allen, the chairman and foundation trustee of the Trust; and Chris Baillie the Trust's General Manager. Dr Allen will offer more than a walk in a park. Delegates will learn about why ecosanctuaries play an important role in our communities yet face significant hurdles to their establishment. Issues of land acquisition and tenure, funding, and public participation will be traversed. Lofty ideals are all very well, but how can a sanctuary work? Come and find out.

Peninsula experience



Predominantly of volcanic origin, the Otago Peninsula is steep and, on the Pacific side, very rugged. The harbour side, warm, sunny and sheltered and has a micro climate that is better than anywhere else on the Otago coast. It is one of New Zealand's most renowned eco-tourism areas and there are numerous historic sites along its length.

This field trip will travel the length of the Otago Peninsula and visit the royal albatross colony at Tairoa Head. You will travel to Tairoa Head via the spectacular high road of the Peninsula. Once at Tairoa Head you will see the only mainland albatross colony and visit the historic disappearing gun. The focus of this field trip is to appreciate nature and heritage tourism all rolled into one.

Gold rush – past, present, future

Macraes Gold Mine at Macraes Flat is operated by the Oceana Gold (NZ) Ltd. Take a bus trip to Macraes Flat and on to a tour around Oceana Gold's hard rock (open cast and tunnel) gold mine.

This tour will look not only at the management of the current operations in the context of the RMA, but also at the past effects of the previous "gold rush" in the 1860s. You will also examine the heritage and cultural values that remain in the area, including significant ties to the early Chinese community.

Currently, Oceana Gold, in partnership with the local community, is looking at future uses of the land to sustain the community beyond the life of the mine. These developments include the trout hatchery in conjunction with Otago Fish and Game Council, and the proposed Heritage and Art Park. Delegates will see how this community plans to adapt to what the future holds.

Trains and plains



Between 1879 and 1990, when it was closed down, the Central Otago Railway saw a number of different uses, now known as the Taieri Gorge Railway; it is now one of Dunedin's premier tourist activities. This field trip will be a case study of the railway and how communities that benefit from such activities may be catered for in planning regimes.

At the start of the 4 hour return trip over the Taieri Gorge to Pukerangi, Murray Bond, General Manager of the Taieri Gorge Railway Limited, will address delegates on the history of the railway and the company's work that has turned it into the attraction it is today. Murray has some strong views on the rail versus road debate and will share some thoughts on that issue also.

Commentary will be provided throughout the journey of the natural and historical landmarks that punctuate the trip.

Councillor Kate Wilson will join the trip at Pukerangi to speak about her experiences as a long-time resident and local body politician at Middlemarch. Kate has seen towns on the Strath Taieri, including Middlemarch, and in the Central Otago district grow as a result of activities like the Taieri Gorge Railway and the Central Otago Rail Trail. She is especially interested in how District Plans affect communities on the outskirts of districts like Dunedin and how planning regimes cater (or fail to cater) for these areas.

Contrasting castles



Larnach Castle sits atop the Peninsula looking over Otago Harbour. Built in 1871 it has been a feature of the Dunedin landscape for many years. The current owners brought the dilapidated property in 1967 and have restored the Castle and surrounding gardens. It is now a major local tourist attraction.

Cargill's Castle, which occupies an equally prominent place within the city's history, has had a vastly different experience. Despite the efforts of a group of passionate supporters, numerous attempts to rally support and funding to undertake a significant restoration project have been unsuccessful.

Delegates will travel by bus to Larnach's Castle and be taken upon a guided tour of the castle. The bus will then travel along the top of the Peninsula to view Cargill's Castle above St Clair.

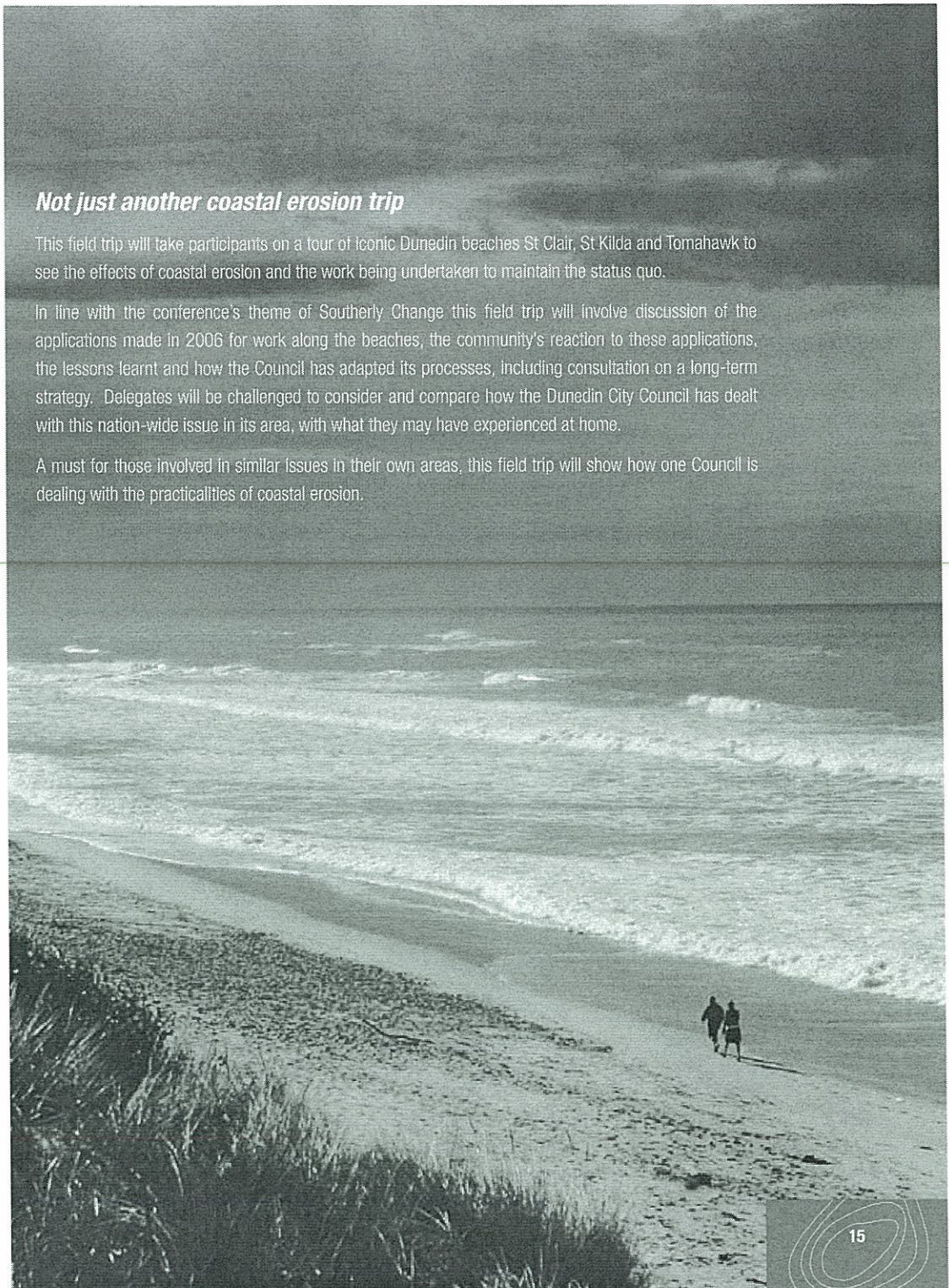
This field trip provides an example of the adaptive reuse possibilities that exist for New Zealand's heritage buildings and the contribution that these can make to the community. The field trip will provide delegates with the opportunity to contrast the success of Larnach's Castle with the challenges that have beset Cargill's Castle.

Not just another coastal erosion trip

This field trip will take participants on a tour of iconic Dunedin beaches St Clair, St Kilda and Tomahawk to see the effects of coastal erosion and the work being undertaken to maintain the status quo.

In line with the conference's theme of Southerly Change this field trip will involve discussion of the applications made in 2006 for work along the beaches, the community's reaction to these applications, the lessons learnt and how the Council has adapted its processes, including consultation on a long-term strategy. Delegates will be challenged to consider and compare how the Dunedin City Council has dealt with this nation-wide issue in its area, with what they may have experienced at home.

A must for those involved in similar issues in their own areas, this field trip will show how one Council is dealing with the practicalities of coastal erosion.



Special Interest Group Meetings

Thursday 25 September 1.45 - 4.00pm

National RMA instruments and call-ins - What's happening?

An interactive workshop on what is happening with national environmental standards, national policy statements, call-in and all-of-government submissions. The 2005 RMA Amendment Act signaled greater national leadership to improve the RMA. This workshop will provide an update on what is being delivered with respect to water management and flooding, electricity generation and transmission, telecommunications, air quality and urban design. It will also provide an opportunity to discuss lessons learnt and what future priorities should be.

Speakers:

Tim Bennetts, Manager RMA Policy, Ministry for the Environment

Glenn Wigley, Manager Environmental Standards, Ministry for the Environment

Climate change SIG discussions

Workshop/interactive discussion session with selected guest speakers - to discuss controversial and interesting topics, for example:

Future proofing New Zealand:

Getting on the front foot to demonstrate our low carbon footprint credentials to Northern Hemisphere consumers

What are the risks?

What role does the Emissions Trading Scheme have to play?

Emissions trading scheme:

Whats in the pipeline?

What are the initial high priority issues - from government and also business perspectives?

What impact is the ETS predicted to have on New Zealand's carbon emissions?

Emerging science and technologies:

Whats happening in Antarctica and what can we learn from this?

What about carbon in the soil?

Whats about green technologies like Carbon Sequestration?

International perspectives:

Roles of the superpowers - India, China and the United States

The north/south equity balance

Social Events

Welcome Reception

Join us on Thursday evening for canapés and drinks, and an opportunity to catch up with colleagues.

Date: Thursday 25 September 2008

Time: 5.00 – 7.00pm

Venue: Dunedin Town Hall

Cost: One ticket is included in each full conference registration. You will automatically be registered for this function unless you advise otherwise. Additional tickets may be purchased for \$45 incl GST.

Kindly sponsored by **RUSSELL McVEAGH**



Southern Tastes Function

This function will enable you to explore southern hospitality at its best. You will have the opportunity to experience "The Big Picture", an essential wine adventure, whiskey tasting with Scotia Restaurant & Whiskey Bar and sampling the south's finest ales – Speights, Green Man Brewery and Emersons.

Date: Friday 26 September 2008

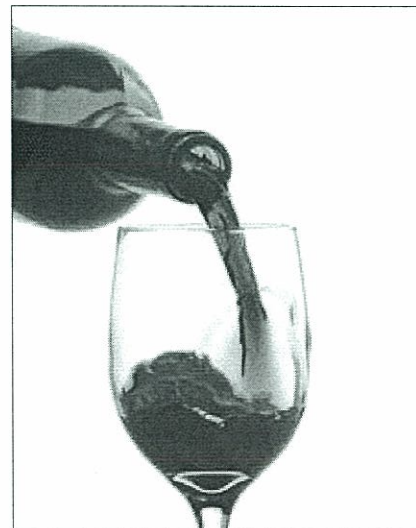
Time: 4.30 – 7.00pm

Venue: Dunedin Town Hall, Skeggs Gallery and the Rialto (Longroom)

Cost: One ticket is included in each full conference registration. You will automatically be registered for this function unless you advise otherwise. Additional tickets may be purchased for \$60 incl GST.

Please note: Transport to each of the southern taste venues is on foot, please ensure you wear comfortable shoes.

Kindly sponsored by **ANDERSON LLOYD
LAWYERS**





Conference Dinner

We intend to finish the '08 conference off with a fling..... of a Highland note that is! From the piping of the Haggis to a lively Scottish band we promise to entertain you with a superb evening of all things Scottish! The wearing of tartan, kilts and sporrans, although optional, is to be encouraged!

Date: Saturday 27 September 2008

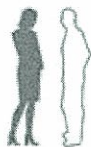
Time: 7.00 for 7.30pm - midnight

Venue: Dunedin Town Hall

Cost: One ticket is included in each full conference registration. You will automatically be registered for this function unless you advise otherwise. Additional tickets are available for \$110 incl GST.



Kindly sponsored by



Lane Neave LAWYERS



Registration Fees

	Early Bird Prior to 22 August 2008	Standard From 22 August 2008
Full Conference Registration		
Member	\$790.00	\$890.00
Non Member	\$965.00	\$1065.00
Day Registration		
Member	\$475.00	\$575.00
Non Member	\$650.00	\$750.00

Full conference fee includes:

- Attendance at all conference business sessions
- Satchel and contents
- Morning and afternoon teas
- Lunches
- Field Trip
- One ticket to the Welcome Reception, Southern Tastes Function and Conference Dinner

Day registration fee includes:

- Attendance at that day's conference business sessions
- Satchel and contents
- Morning and afternoon tea
- Lunch
- Field trip for Saturday registration only

Register Online

Register online at www.rmla.org.nz



Visit the RMLA website www.rmla.org.nz and follow the link to the online registration form. Print a copy for your records. Payment for registration can be made by credit card (visa or mastercard) (secure transmission facilities provided) or an invoice can be requested.

Once you have completed the registration process, a summary of your registration will be e-mailed automatically and a tax invoice will be e-mailed within seven days. You may access and amend your details until one month prior to the conference.



Mail the registration form together with your cheque or credit card payment to:
RMLA Conference 2008, Conference Innovators, PO Box 13 494 Armagh, Christchurch 8141.
A summary of your registration and a tax invoice will be sent to you within seven days.



Fax the completed registration form (both sides) together with your credit card payment to:
03 379 0460. A summary of your registration and a tax invoice will be sent to you within seven days.

Cancellations

Should you need to cancel your registration, you may reassign your registration to another person. Please notify the Conference Manager in writing.

If you are unable to arrange a replacement, a refund less a \$150 cancellation fee will be made provided notification is received by **Friday 22 August 2008**. After that date, refunds will be at the discretion of the Organising Committee.

If, for reasons beyond the control of the Organising Committee, the conference is cancelled, registration fees will be refunded after deduction of expenses already incurred.

Subsidies

A limited number of subsidised places are available for NGO and iwi delegates (total registration cost reduced to \$200) and students (total registration cost reduced to \$100). Subsidies apply to the business sessions of the conference and exclude the Welcome Reception, Southern Tastes and Conference Dinner. Places will be allocated after consideration of a written application to the Conference Committee, at the Committee's discretion, having regard to the following criteria:

- Ability of the conference venue to accommodate additional delegates
- Clear inability to pay the full registration fee
- Genuine involvement or interest in resource management issues
- Membership of a relevant NGO or iwi organisation, or study in a relevant field
- Geographical representation
- Whether subsidised delegate is likely to represent a view that would not otherwise be represented

Closing date for applications is **Friday 29 August 2008**. Applications are to be sent to the RMLA Conference 2008 Committee
C/- Conference Innovators
PO Box 13 494 Armagh
Christchurch 8141

RMLA Membership Information

The Resource Management Law Association of New Zealand Inc was formed on 1 October 1992, to provide a multi-disciplinary body for all professionals having an involvement in resource management and environmental law.

The object of the Association is to promote within New Zealand an understanding of the role of resource management law and management processes which are legally sound, effective and efficient and which produce high quality environmental outcomes.

The RMLA has obviously struck a chord with resource management practitioners from all relevant disciplines. With over 1,100 members, RMLA has a diverse membership base, in keeping with its philosophy.

Membership subscription

\$125.00 (\$60.00 for full-time students) for a 12 month membership from 1 October 2008. Membership subscription is separate to the conference registration and a membership form can be downloaded from the RMLA website www.rmla.org.nz. Please enclose a cheque for \$125.00 (incl GST), payable to the Resource Management Law Association of NZ Inc and send to RMLA.

For more information on membership or to subscribe, please contact:

Karol Helmink
Executive Officer
RMLA
C/- Shaw Way
Hillsborough Phone/Fax (09) 626 6068
Auckland 1041 Email: karol.helmink@xtra.co.nz



Accommodation

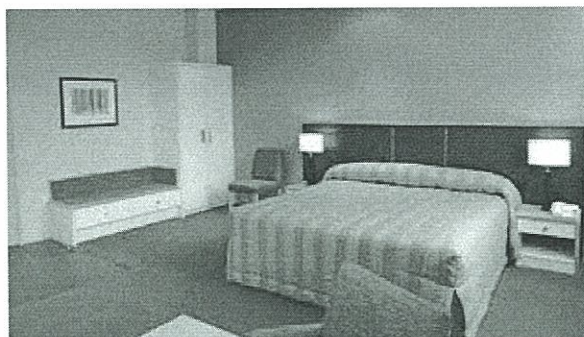
The conference has secured a block booking in each of the listed hotels. Rooms will be allocated on a first in basis until **Friday 22 August 2008** as long as there are rooms available. After this date all unallocated rooms will be released and no guarantee can be made that rooms will be available for late bookings.

Bookings should be made either as part of the on-line registration process or on the registration form in this brochure and faxed or posted to Conference Innovators.

Accommodation bookings must be guaranteed with a credit card number. The credit card will be used as a guarantee only and no charges will be debited prior to check-out (apart from any cancellation fees that apply). Cancellation fees may apply any time within the month prior to conference.

On check-out your accommodation costs and incidentals can be settled with cash, eftpos or credit card. If you wish to charge back your accommodation this can be done at check-out if your organisation has made a prior arrangement directly with the hotel concerned.

All prices are per night and inclusive of GST.



Scenic Circle Dunedin City Hotel

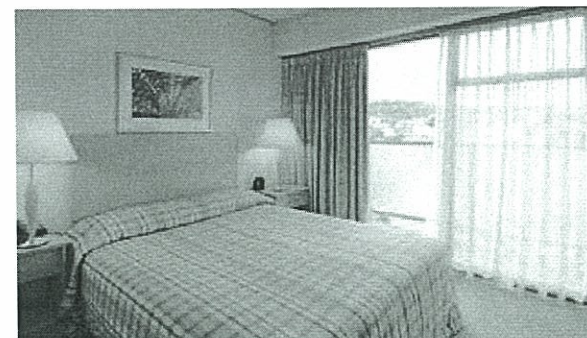
Standard Room \$180 incl GST

Check in: 2.00pm

Check out: 10.00am

Cnr Princess and Dowling Street

8 minute walk to the Dunedin Centre



Kingsgate Hotel Dunedin

Standard Room \$180 incl GST

Check in: 2.00pm

Check out: 10.00am

10 Smith Street

5 minute walk to the Dunedin Centre



Scenic Circle Southern Cross Hotel

Standard Room \$180 incl GST

Check in: 2.00pm

Check out: 10.00am

Cnr Princess and High Street

12 minute walk to the Dunedin Centre



Mercure Hotel

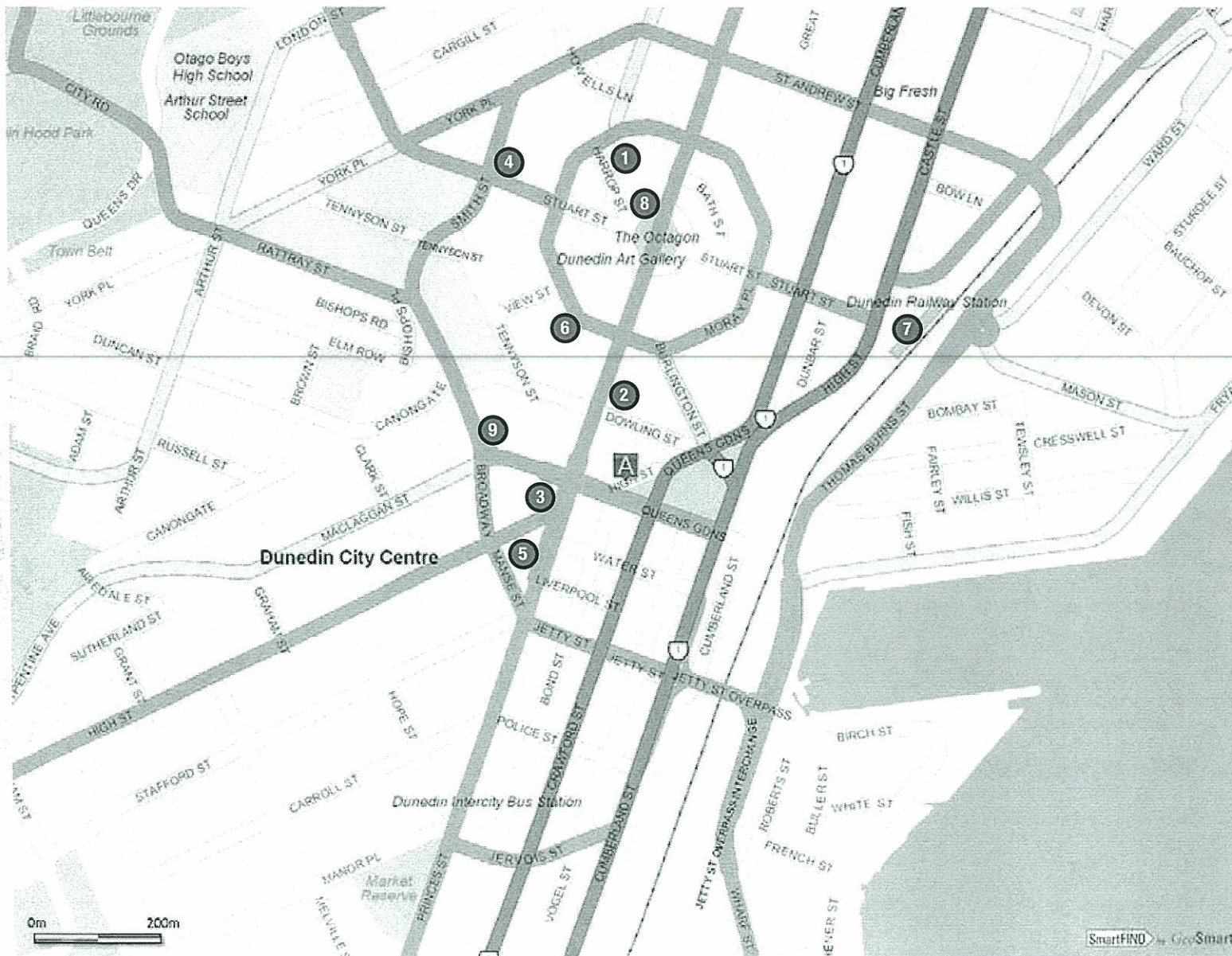
Standard Room \$150 incl GST

Check in: 2.00pm

Check out: 11.00am

310 Princess Street

15 minute walk to the Dunedin Centre



1. The Dunedin Centre
2. Scenic Circle Dunedin City Hotel
3. Scenic Circle Southern Cross Hotel
4. Kingsgate Hotel Dunedin
5. Mecure Hotel Dunedin
6. Rialto (Longroom)
7. Dunedin Railway Station
8. Skeggs Gallery
9. Speight's Brewery

General Information

Your conference pack will be available for collection from the Registration Desk located in the Foyer of the Dunedin Centre. The desk will be open at the following times:

Thursday 25 September	1.00pm – 5.00pm
Friday 26 September	7.30am – 5.30pm
Saturday 27 September	7.30am – 5.00pm

Air Travel

With limited flights into Dunedin, it is recommended that delegates book their air travel early to avoid disappointment.

Special Requirements

Please give details of any special diet or disability assistance required on your registration form.

Conference Organising Committee

Maree Baker – Co Convenor	Chris Thomsen
Phil Page – Co Convenor	Ceri Warnock
Royden Somerville QC	Nicola Wheen
Michael Garbett	Martin Williams – National Committee Liaison
Kirsten Klitscher	Karol Helmink – RMLA
Carmen Taylor	Rachel Cook – Conference Innovators

Conference Managers

If you have any queries about the Conference arrangements please contact:

Conference Innovators Ltd

Rachel Cook

PO Box 13 494 Armagh

196 Gloucester Street

Christchurch 8141

Tel: +64 3 379 0390

Fax: +64 3 379 0460

E-Mail: rachel@conference.co.nz





REGISTRATION FORM

Secure online registration available: www.rmla.org.nz

Tax Invoice - GST Registration Number 60 742 715

Please note the increase in delegate registration fees from Friday 22 August 2008

Delegate

Surname _____

Title (Dr/Mr/Mrs/Ms/Prof) _____

First Name (for name badge) _____

Organisation/Company _____

Position _____

Postal Address _____

City/Town _____

Country _____

Post Code (mandatory) _____

Telephone (____) _____

Facsimile (____) _____

Email _____

Special requirements e.g. dietary, disabilities etc.

Registration Fees (all fees include 12.5% GST)

Please indicate which type of registration applies to you:

	Early Bird Up to Friday 22 August 2008	Standard From Saturday 23 August 2008	
Full Conference Registration			
RMLA Member	\$790.00	\$890.00	\$ _____
Non Member	\$965.00	\$1065.00	\$ _____
Day Registration			
RMLA Member	\$475.00	\$575.00	\$ _____
Non Member	\$650.00	\$750.00	\$ _____

I will be attending the conference on Friday

I will be attending the conference on Saturday

Registration Fees Sub Total (GST Inclusive) \$ _____

Workshops Sessions and Field Trips – Expression of Interest

To assist with room and bus allocation, please indicate which workshops sessions and field trips you are most interested in attending. This is an indication of preference only and not a booking. As space is limited, please list your 3rd and 4th preference.

Workshops	Fri 25 Sept	Sat 27 Sept
W01 Sustainable building and affordable housing		
W02 Changing styles of management		
W03 Heritage – out with the old, in with the new?		
W04 Changing with the times		
W05 Onwards and upwards – Case law and best practice updates		
Field Trips		Sat 27 Sept
F01 Our industrial heritage		
F02 Orokonui Ecosanctuary		
F03 Peninsula experience		
F04 Trains and plains		
F05 Contrasting castles		
F06 Not just a coastal erosion trip		
F07 Gold rush – past, present, future		

Social Functions

Please note: All full conference registrations will be automatically registered for all three social functions, please indicate below if you do not wish to attend. Please select the social functions you wish to attend if you are a day registration or additional guest.

Welcome Reception - Thursday 25 September 2008

No, I do not wish to attend N/C

1 Complimentary ticket with full conference registration

Number of additional tickets _____ @ \$45.00 \$ _____

Southern Tastes Function - Friday 26 September 2008

No, I do not wish to attend N/C

1 Complimentary ticket with full conference registration

Number of additional tickets _____ @ \$60.00 \$ _____

Conference Dinner – Saturday 27 September

No, I do not wish to attend N/C

1 Complimentary ticket with full conference registration

Number of additional tickets _____ @ \$110.00 \$ _____

Social Functions Sub Total (GST Inclusive) \$ _____

Delegate Gift

Please indicate your shoesize

Mens 6 7 8 9 10 11 12 13

Womens 5 6 7 8 9 10 11

Accommodation *(Please note all room rates include 12.5% GST)*

A credit card number **must** be provided before accommodation bookings will be guaranteed (see below).

No charges will be debited prior to check-out. Accommodation costs can be settled on departure with cash, eftpos or credit card.

Scenic Circle Dunedin City Hotel

Room type required:

- Double \$180 per room per night Twin \$180 per room per night

Scenic Circle Southern Cross Hotel

Room type required:

- Double \$180 per room per night Twin \$180 per room per night

Kingsgate Hotel Dunedin

Room type required:

- Double \$180 per room per night Twin \$180 per room per night

Mercure Hotel Dunedin

Room type required:

- Double \$180 per room per night Twin \$180 per room per night

Accommodation details

Date of arrival: _____

Date of departure: _____

Expected check-in time: _____

If you are sharing the room please give the other person's name:

Payment Summary

Method of Payment (please tick)

- Credit Card
 Cheque
 Direct Credit 02 01 0007 0990 601

Please use delegate's last name and initial as a reference.

Registration Fees \$ _____

Social Functions \$ _____

Total (New Zealand dollars) \$ _____

Please make cheques in NZ\$ payable to "RMLA Conference 2008".

Credit Card Authorisation for Accommodation and Registration Payment

Accommodation bookings must be guaranteed with a credit card. Please tick if you wish your Registration Fee to be deducted from this card.

- Yes, please deduct my Registration Fee from my credit card.

Card Number

□ □ □ □ □ □ □ □ □ □ □ □ □ □ □ □

Expiry Date _____

Cardholder's Name _____

Signature _____

Date _____

How to Register



Mail this completed form together with your cheque or credit card payment to:
Conference Innovators Ltd, PO Box 13-494 Armagh,
Christchurch 8141



Visit the website www.rmla.org.nz, click on 'Conference 2008' and follow the link to the secure online registration form.



Fax this completed form (both sides) together with your credit card payment to: Conference Innovators +64 3 379 0460

Privacy

The RMLA Conference 2008 Organising Committee will share the information supplied on the registration form. Unless you advise Conference Innovators Ltd, in writing, that you do not wish this information to be made available, your name will be included in the list of conference participants distributed to delegates and sponsors.

- Please indicate if you DO NOT wish your name and details to be included in the list of delegates.

Cancellation

Should you need to cancel your registration, you may reassign your registration to another person. Please notify the Conference Manager. If for reasons beyond the control of the Organising Committee the conference is cancelled, registration fees will be refunded after deduction of expenses already incurred





Resource Management Law Association
of New Zealand Inc.