

Report 12.559
Date 27 November 2012
File WO/02/02/01

Committee Environmental Wellbeing Committee
Author James Flanagan, Senior Engineer

Waiohine River Floodplain Management Plan Update

1. Purpose

The purpose of this report is to outline the Waiohine Floodplain Management Plan (FMP) progress thus far, and to seek the committee's endorsement of the recommendations made by at the 15 October meeting of the Waiohine Floodplain Management Planning Advisory Committee (WFMPAC).

2. The decision-making process and significance

Officers recognise that the matters referenced in this report may have a high degree of importance to affected or interested parties.

The matter requiring decision in this report has been considered by officers against the requirements of Part 6 of the Local Government Act 2002 (the Act). Part 6 sets out the obligations of local authorities in relation to the making of decisions.

2.1 Significance of the decision

Part 6 requires Greater Wellington (GW) to consider the significance of the decision. The term 'significance' has a statutory definition set out in the Act.

Officers have considered the significance of the matter, taking the Council's significance policy and decision-making guidelines into account. Officers recommend that the matter be considered to have low significance.

Officers do not consider that a formal record outlining consideration of the decision-making process is required in this instance.

3. Background

In September 2008 work commenced on the development of a Floodplain Management Plan for the Waiohine River. The Waiohine River drains the eastern watershed of a section of the Tararua ranges linking with the Ruamahanga River in the main Wairarapa Valley. The river passes through pastoral farmlands, to the north of Greytown, which sits on the rivers

floodplain. The protection of Greytown from flooding is a key focus in the development of the FMP.

There are strong associations between the river and Tangata Whenua as well as colonial settlers. These people's shared links with the river give a rich historical background to work from.

There have been several schemes that have been run on the river funded both locally and with monies from central government. The current scheme is run between Greater Wellington and the local Committee with funds supplied by targeted rates and from the Council on a 50:50 basis.

Flood Protection has been introducing a Floodplain Management Planning approach into the Wairarapa, in line with the Flood Protection vision and the LTP statements. This FMP approach has been successful in the western part of the region and this model is now being used in the Wairarapa. While similar works have been completed in the recent past in the Wairarapa, they focused more on how to address the flooding by building structures. From experience we recognise that there are four components to any long term vision for managing the flood risk in the river, being:

1. How we work in the river (river channel management). This is critical to the long term viability of the river scheme.
2. What structures might be used to address the significant portion of this risk, do we build stopbanks?
3. How do we address the remaining risk through planning? How do we promote sensible new development that avoids the hazard, and how do we ensure that existing development recognises the remaining risk?
4. What do we do about the remaining risk from the hazard? We have an obligation, given the known flood risk, to reduce the risk to human life as far as practicable with emergency management measures forming a key component in achieving this.

4. Process/progress thus far

Through this FMP process, we have been able to clearly define the flood hazard and have looked at what can be done to mitigate the risk to the community on a broad range basis. These ideas were refined to focus on the most practical options. At the start of the process ten combinations of options were tabled. These combinations were further refined with seven being considered in detail. The seven options considered ranged from a "do nothing" approach through to one relying heavily on structural measures to mitigate the risk. The WFMPAC then undertook a thorough Multi Criteria Analysis (MCA) to try to assess and rank these options.

Option 7 was the preferred option following the undertaking of the Multi Criteria analysis. A sensitivity analysis was then undertaken which showed that the preferred option was sensitive to the scoring of the attributes. If the scores were changed to take into account differing perspectives, then Option 4 also had a good score. Option 4 had a number of different outcomes to Option

7, and it was therefore decided to recommend both options for detailed analysis in the next Phase of the FMP process.

The two combinations of options to be further investigated differ in how the river channel is to be managed and how flood risk is dealt with by structural measures.

The structural components for Option 7 are shown as **Attachment 1**, and for Option 4 are shown as **Attachment 2**.

In terms of river management, Option 7 continues with the same approach as we currently use, and Option 4 uses more river training works and buffers in an attempt to reduce the amount of work in the river in the long term.

5. Remaining work process/progress

The remaining work is as follows:

Modelling, survey and ecological assessment completed by the end of the 2012 calendar year. A detail of the recent progress and the remaining work can be seen in **Attachment 3**.

The required additional survey, modelling and ecological assessments will be completed this calendar year. Additional work to consider the cost / practicalities will take place in early 2013. There will be ongoing consultation with two wider public sessions currently planned for the second half of February 2013 and the beginning of March 2013.

The WFMPAC have requested that the remaining FMP work be completed as fast as possible as there is a great concern about the flood risk to Greytown. The focus from the WFMPAC is to get the FMP document completed and some form of protection for Greytown be put into place as quickly as possible.

To be able to meet this concern of the WFMPAC, some of the FMP activities will run concurrently. While not usual practice there are no specific quality and outcome concerns with proceeding on this basis.

As part of this ongoing options assessment, groups of affected parties have been identified. We will consult with these groups discussing not only the preferred options, but what can be done to mitigate any negative effects. These groups will be in addition to our work with the Committee and the wider Greytown community.

6. Comment

The original timeframe for completion of key milestones for the FMP has slipped. There has been a substantial workload within the department which has drawn resources away from this project, meaning we are behind schedule. We have now revised the programme, and are confident we have sufficient resources and funds to complete the remaining work to programme.

The monies allocated for construction by this Council have been subject of much comment and concern by the WFMPAC. There is a concern that through possible future restructuring of local government these monies may be lost.

With the progressive introduction of the FMPs in the Wairarapa there is a need for the community to start to recognise the need to form a long term perspective on how to deal with hazards. Flood Protection has been working to engage the community so at the very least the community will become aware of the reasoning behind this approach.

As we progress through the option assessment work, we aim to provide clear detailed information, technical advice and guidance to the WFMPAC so that a practical outcome consistent with GW policy and acceptable to the community is chosen. We will advise this Committee of the progress of this assessment as it proceeds.

7. Communication

A newsletter and press release outlining recent progress on the Waiohine FMP are being prepared. These will detail the progress thus far and also give some information on the two options which will be evaluated in detail by the WFMPAC. A draft copy of this most recent newsletter will be sent out in the next Councillors' Bulletin.

We will hold a set of public workshops in Greytown in late February and early March 2013. These will be held to inform the public and also ask for their opinion on the options given the information provided. The WFMPAC can then use this feedback to gauge the position of the wider community, when evaluating which option they will recommend to this committee.

8. Recommendations

That the Committee:

1. ***Receives the report.***
2. ***Notes the content of the report.***
3. ***Endorses the recommendations of the Waiohine FMP Advisory Committee that Options 7 and 4 be evaluated in detail in Phase 3 of the Waiohine FMP.***

Report prepared by:



James Flanagan
Senior Engineer,
Investigations, Strategy &
Planning

Report approved by:



Jan Van der Vliet
Team Leader, Investigations,
Strategy & Planning

Report approved by:



Graeme Campbell
Manager, Flood Protection

Report approved by:



Wayne O'Donnell
Group Manager
Catchment Management

Attachment 1

Option 7

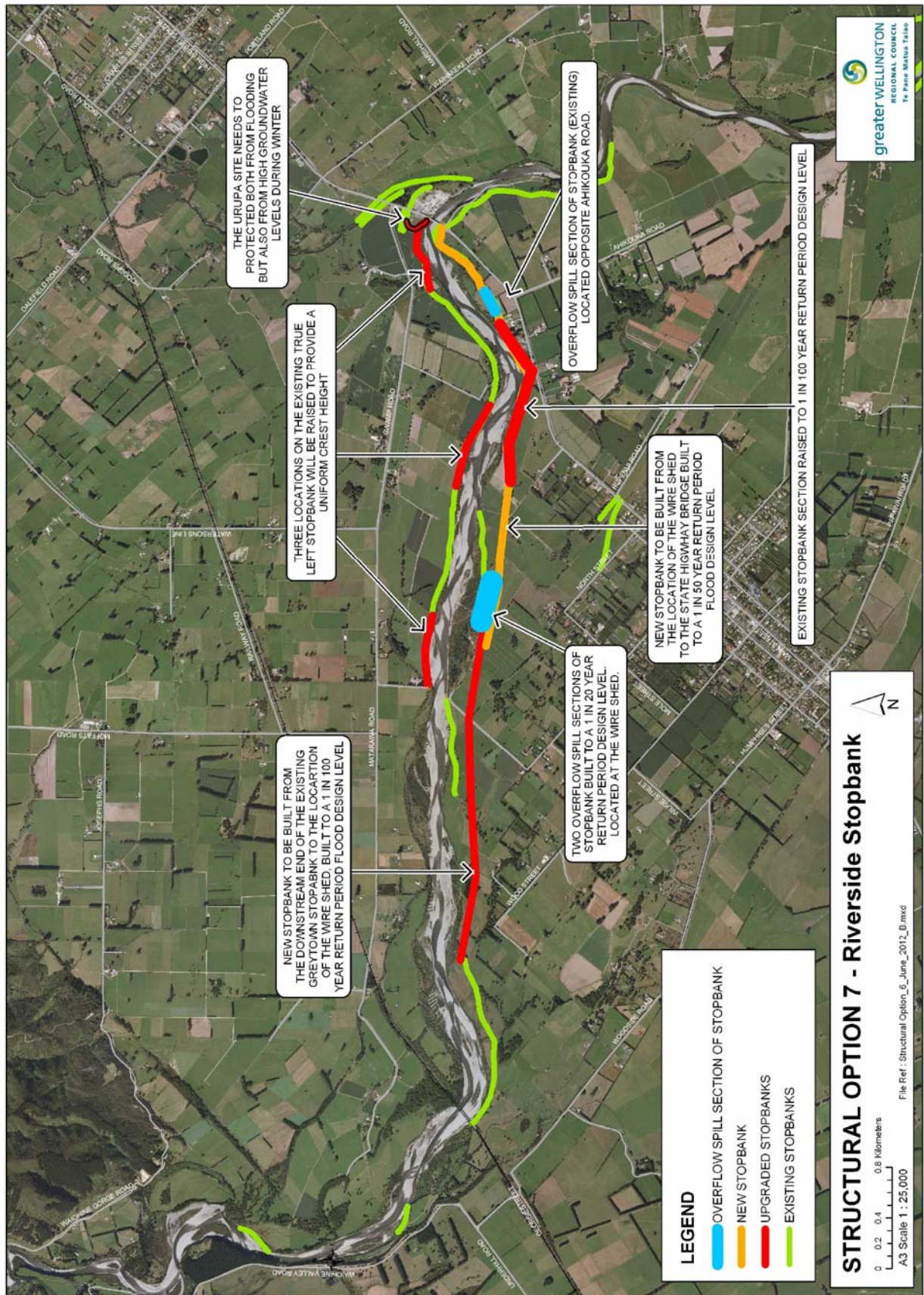
Attachment 2

Option 4

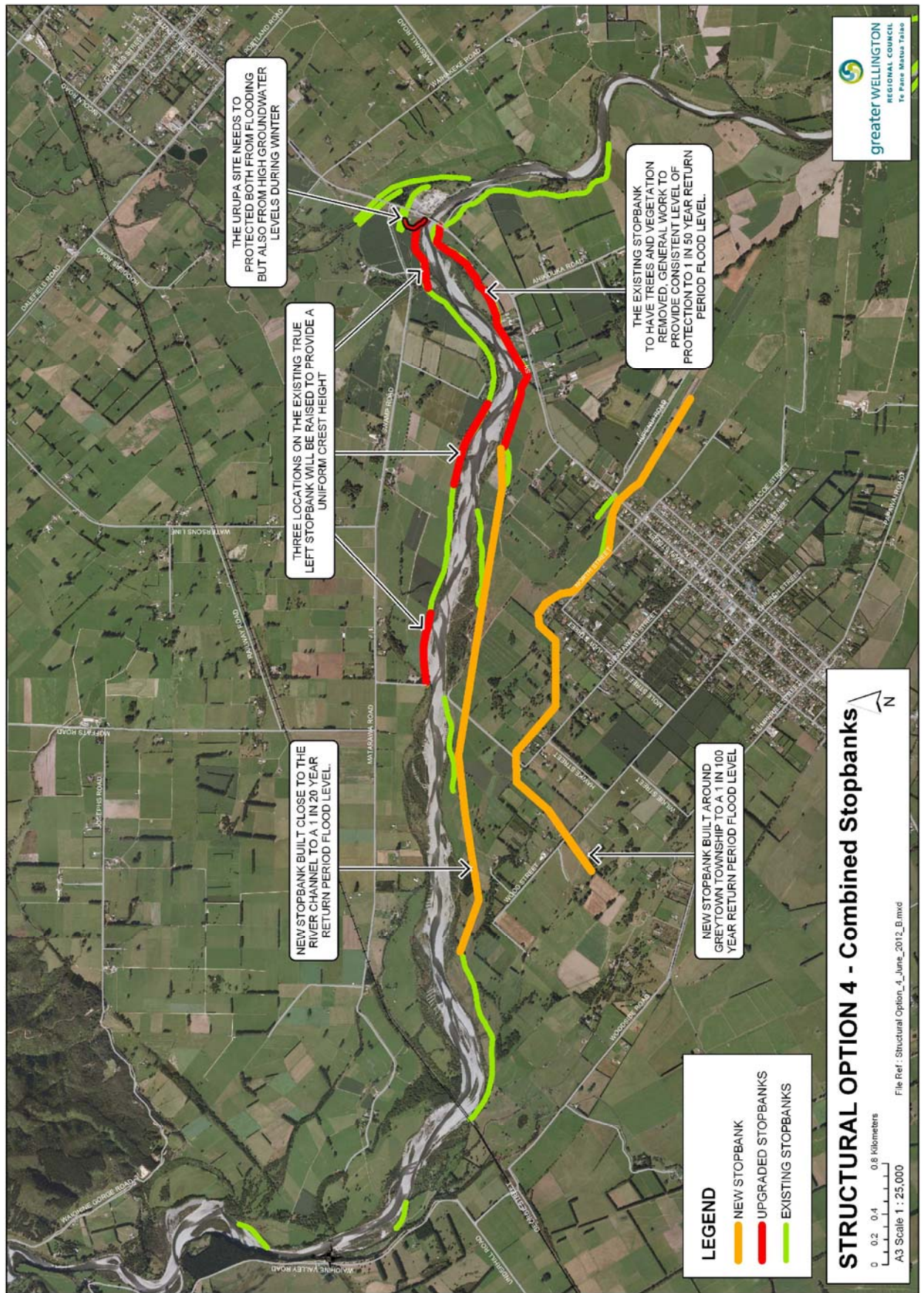
Attachment 3

Outline of recent progress and remaining work

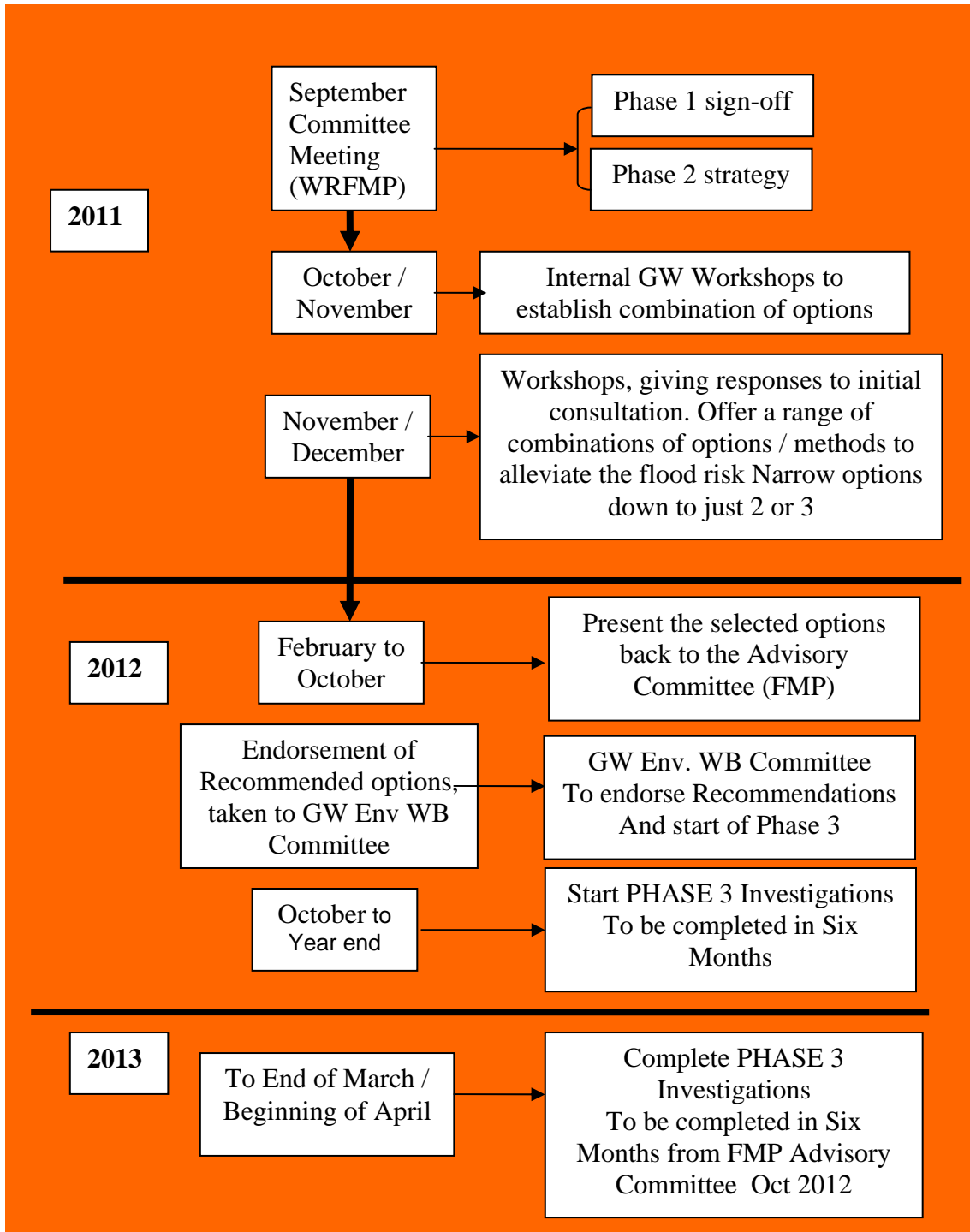
Option 7



Option 4



Proposed Work Programme to the end of Phase 3



Detail of Proposed Work over the next Six Months

