



greater
WELLINGTON
REGIONAL COUNCIL
Te Pane Matua Taiao

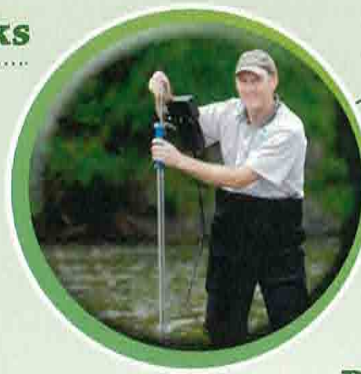
Have your say...

On Greater Wellington Regional Council's plan for 2013/14

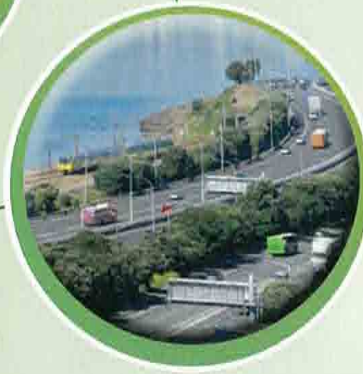
Flood protection and control works



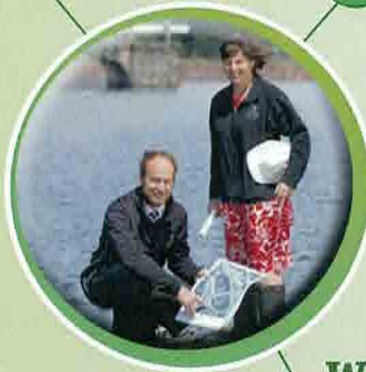
Environment



Regional leadership



Public transport



Water supply



Parks

- Proposed parks concession policy
- Proposed resource management charging policy

Submission forms inside or
gw.govt.nz/have-your-say



Your region, your plan...

If you live in Wellington, Lower Hutt, Upper Hutt, Porirua, Kapiti Coast, Masterton, Carterton or the South Wairarapa, the Greater Wellington Regional Council provides you with a range of services.

We would like your feedback on the draft Annual Plan 2013/14

The Greater Wellington Regional Council manages and funds public transport services, builds and maintains flood protection along our major rivers, provides drinking water for most people in the region, provides regional parks and manages the region's natural resources – water, coasts, air, soil, and biodiversity. We also lead regional planning for transport, economic development, emergency management and climate change.

We're now finalising our Annual Plan 2013/14 which outlines your proposed rates, the key projects for the 2013/14 financial year and the key changes from the Long Term Plan 2012-22. The draft Annual Plan is available online at www.gw.govt.nz/have-your-say

The Greater Wellington Regional Council is also consulting on the Proposed Resource Management Charging Policy and the Proposed Parks Concession Guidelines. See page 10 for details of what's proposed.

How to have your say

We want to hear your thoughts on the draft Annual Plan 2013/14, the Proposed Resource management Charging Policy and the Proposed Parks Concession Policy

Write a submission

Use the submission form on page 13, send an online submission via our website or write a letter to us at:

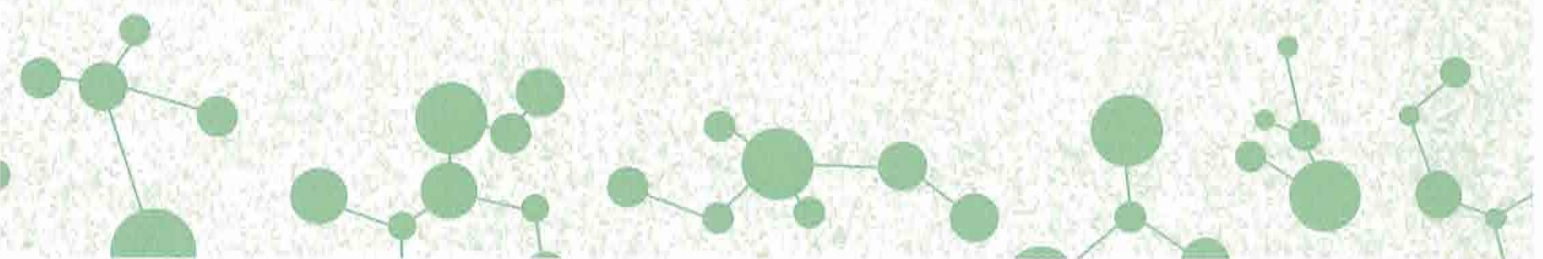
Greater Wellington Regional Council
Draft Annual Plan submissions 2013/14
Freepost 3156
PO Box 11646
Wellington 6142

Visit our website

www.gw.govt.nz/have-your-say to view a copy of the full draft Annual Plan and contribute to discussion forums

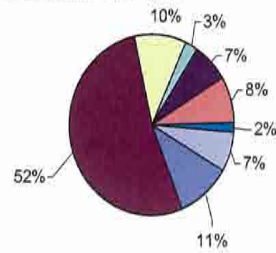
Message from the Chair

insert message here



Proposed rating information for 2013/14

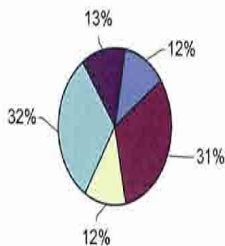
Greater Wellington's gross expenditure 2013/14



Environment	\$27.4m	(11%)
Transport	\$136.8m	(52%)
Water supply	\$26.9m	(10%)
Parks	\$6.7m	(3%)
Flood Protection and Control works	\$18.m	(7%)
Investments	\$21.3m	(8%)
Corporate	\$4.1m	(2%)
Regional Leadership	\$18.4m	(7%)

Greater Wellington is planning \$15 million on capital expenditure, \$23 million on transport improvements and \$204 million in gross operating expenditure. This pie chart shows the total cost of delivering Greater Wellington's services, broken down by our groups of activities. The most significant area of our expenditure is transport, accountable for 52% of the total work programme for 2013/14.

Greater Wellington's Revenue 2013/14



General Rates	\$27.2m	(12%)
Targeted Rates	\$67.2m	(31%)
Water Supply Levy	\$25.6m	(12%)
Government Subsidies	\$68.4 m	(32%)
Other Revenue	\$27.2m	(13%)

Greater Wellington's work programmes will be funded by a mix of rates, levies, government subsidies and other revenue. Regional rates, comprising general rates and targeted rates, make up 43% of Greater Wellington's total revenue for 2013/14. Government subsidies (primarily for funding public transport services and the extensive public transport rail network upgrade) make up a further 32% and the water supply levy (charged to the Wellington, Porirua, Hutt and Upper Hutt city councils) makes up 12%. The remaining 13% of revenue is from other external sources.

RATES AND LEVIES - RESIDENTIAL REGION-WIDE RATES CALCULATOR WHAT IS THE IMPACT ON YOUR PROPERTY?

The table below shows how you can calculate your own residential proposed region-wide rates for 2013/14. For example, if you live in Porirua city and have a residential property with a capital value of \$350,000 your indicative regional rates are \$336.00 plus GST @ 15% = \$386.40

Please note: The above calculation does not include rates set by your local city or district council and any district or property specific targeted rate

	2013/14 Region-wide ¹ rates per \$100,000 of capital value, excluding the WRS rate		Enter the capital value of your property			WRS rate ² residential property		Indicative rates on your property for 2013/14 ¹
Wellington city	\$60.75	x		÷ 100,000	+	\$14.00	=	
Lower Hutt city	\$98.71	x		÷ 100,000	+	\$14.00	=	
Upper Hutt city	\$94.39	x		÷ 100,000	+	\$14.00	=	
Porirua city	\$91.97	x		÷ 100,000	+	\$14.00	=	
Kapiti Coast district	\$67.64	x		÷ 100,000	+	\$14.00	=	
Masterton district	\$38.76	x		÷ 100,000	+	\$14.00	=	
Carterton district	\$46.83	x		÷ 100,000	+	\$14.00	=	
South Wairarapa district	\$49.04	x		÷ 100,000	+	\$14.00	=	
Porirua city example	\$91.97	x	\$350,000	+ 100,000	+	\$14.00	=	\$335.90
						Including GST @ 15%		\$386.29

A calculator to assist you check your region-wide rates for all property types is available on our website www.gw.govt.nz

¹ Region-wide rates are rates that are charged to all ratepayers in the region. It excludes Bovine TB, South Wairarapa Region river rates, Wairarapa river and drainage scheme rates and any "Warm Greater Wellington" targeted rates as they impact only certain ratepayers that are covered by these programmes

² The WRS rate is a targeted rate allocated on a fixed amount basis for residential and rural ratepayers. It is allocated on capital value for businesses. For residential properties the fixed amount is \$14.00 + GST and rural properties \$28.00 + GST. This rate is used to fund the Wellington Regional Strategy and Grow Wellington is the region's economic development agency (EDA).

Greater Wellington rates are set and assessed by Greater Wellington but are invoiced and collected by the relevant territorial authority in the Wellington region. Such combined collection arrangements are cost effective and more convenient for ratepayers.

This information should be read in conjunction with the Funding Impact Statement and the Revenue and Financing Policy contained within the 2012/22 long term plan which is available at www.gw.govt.nz

SUMMARY OF PROPOSED RATES AND LEVIES

This table shows the rates and levies for Greater Wellington in 2013/14, together with the changes from 2012/13. Rates comprise the general rate and various targeted rates. Greater Wellington also charges a water supply levy directly to the four city councils in the region. The city councils then rate accordingly for this levy.

The largest single component of Greater Wellington's rates is the transport rate. The increase in the transport rate for 2013/14 includes the financial impacts of the on-going extensive rail rolling stock and network upgrade

The total rate increase in regional rates for 2013/14 is 2.6%. The water supply levy, which is charged to the four metropolitan city councils is proposed to increase by 3% over 2012/13. When the water supply levy is included, Greater Wellington's overall increase is 2.7%.

By rate and levy type:	2012/13	2013/14		
	Budget	Plan	Change	
	\$000s	\$000s	\$000s	
General rates	27,468	27,172	(296)	
Targeted rates:				
Region wide targeted rates:				
River management rates	4,784	4,980	196	
Transport rates	47,512	49,878	2,366	
Stadium rates	2,676	2,676	-	
WRS rates	4,668	4,631	(37)	
Specific area targeted rates:				
Bovine Tb rates	284	284	-	
Possum / Predator rates	201	240	39	
South Wairarapa district – river rates	85	85	-	
Wairarapa scheme and stopbank rates	1,326	1,347	21	
Total targeted rates ¹	61,536	64,121	2,585	
Total regional rates	89,004	91,293	2,289	2.6%
Water supply levy	24,889	25,634	745	3.0%
Total regional rates and levies ¹	113,893	116,927	3,034	2.7%
Warm Wellington rates ²	1,253	3,085		
Total rates and levies	115,146	120,012		

All figures on this page exclude GST

Figures labelled "2012/13 Budget" are sourced from Greater Wellington's 2012/13 Annual Plan.

¹ This total excludes any "Warm Greater Wellington" targeted rates as they impact only those ratepayers that participate in the scheme

² Warm Wellington is the scheme to assist regional ratepayers install insulation in their home. Only ratepayers participating in the scheme are charged this rate

This information should be read in conjunction with the Funding Impact Statement and the Revenue and Financing Policy contained within the 2012/22 long term plan which is available at www.gw.govt.nz

WHAT IS THE IMPACT ON YOUR CITY OR DISTRICT?

Rates increases vary between city and district councils because of differing capital values. Further, some of Greater Wellington's work programmes impact differently across the region, especially flood protection and public transport. See the next page for a break down by city and rate type

By area:	2012/13 Budget	2013/14 Plan	Change	
	\$000s	\$000s	\$000s	
Wellington city	45,958	47,304	1,346	
Lower Hutt city	17,198	17,629	431	
Upper Hutt city	5,979	6,118	139	
Porirua city	7,027	7,238	211	
Kapiti Coast district	6,977	7,083	106	
Masterton district	1,803	1,790	(13)	
Carterton district	820	825	5	
South Wairarapa district	1,344	1,348	4	
Tararua district ¹	2	2	-	
Region-wide rates²	87,108	89,337	2,229	2.6%
Bovine Tb rate	284	284	-	
Possum / predator rates	201	240	39	
South Wairarapa district – river rates	85	85	-	
Wairarapa scheme and stopbank rates	1,326	1,347	21	
Total regional rates	89,004	91,293	2,289	2.6%
Water supply levy				
Wellington City Council	13,339	13,739	400	
Hutt City Council	6,363	6,553	190	
Upper Hutt City Council	2,344	2,414	70	
Porirua City Council	2,843	2,928	85	
Water supply levy	24,889	25,634	745	3.0%
Total regional rates and levies³	113,893	116,927	3,034	2.7%
Warm Wellington rate ⁴	1,253	3,085		
Total rates and levies	115,146	120,012		

All figures on this page exclude GST

Notes:

Figures labelled "2012/13 Budget" are sourced from Greater Wellington's 2012/13 Annual Plan.

¹ 11 rural properties in the Tararua district are within the boundaries of the Greater Wellington region.

² Region-wide rates are rates that are charged to all ratepayers in the region. It excludes Bovine TB, Possum / Predator, South Wairarapa Region river rates, Wairarapa river and drainage scheme rates and any "Warm Greater Wellington" targeted rates as they impact only certain ratepayers that are covered by these programmes

³ This total excludes any "Warm Greater Wellington" targeted rates as they impact only those ratepayers that participate in the scheme

⁴ Warm Wellington is the scheme to assist regional ratepayers install insulation or clean heating appliances in their home. Only ratepayers participating in the scheme are charged this rate

This information should be read in conjunction with the Funding Impact Statement and the Revenue and Financing Policy contained within the 2012/22 long term plan which is available at www.gw.govt.nz

The 2013/14 budget assumes a public transport fare increase in 2013 in order to deliver a 2% increase in revenue. The Long Term Plan 2012/22 allowed for a 3% increase. The proposed fare increase involves increasing Smartcard, 10-trip and monthly pass fares by close to 2.5%, except for one zone fares which would increase by 3.8% (or 6 cents a trip). Adult cash fares would increase by 50 cents for zones 8, 11 and 12 as will the concession fare for zones 11 and 12.

Key projects

from the 2013/14 Annual Plan



Regional leadership

- Continue to work with other councils in the region and the Local Government Commission on local government structural reform
- complete the Public Transport Spine Study through the centre of Wellington city
- develop a regional transport network plan
- continue the regional school travel plan programme
- complete the pre-feasibility study for the Wairarapa Water Use Project

Public transport

- continue to fund rail, bus and ferry services
- start to implement the Wellington City bus review
- review Metlink services in Eastbourne, Wainuiomata, Lower Hutt and Upper Hutt, including east-west connections to Porirua
- complete the review of the Metlink fares structure that commenced in 2012
- continue the procurement of more Matangi trains



Water supply

- investigate provision for emergency storage and improving our resilience to a major emergency event
- increase the resilience of water supply buildings and above ground structures

Key projects

Environment



- continue the Regional Plan review including community consultation on a draft regional plan
- establish collaborative 'Whaitua' or Zone Committees for the region to look at whole of catchment solutions for land and water management issues
- conduct the four yearly customer satisfaction survey for applicants, consent holders and incident notifiers
- commence the 5 year review of the Regional Pest Management Strategy
- expand the Regional Possum Predator Control Programme into western parts of the region
- continue to implement the Wellington Erosion Control Initiative, focused on protecting the worst erosion prone catchments in the region

Flood protection and control works

- develop a Floodplain Management Plan for the Upper Wairarapa Valley
- complete the Boulcott Stopbanks work in the Hutt Valley
- plan for the next major section of stopbanks work through the Hutt City Centre
- plan for channel widening of the Hutt River from Melling Bridge to Kennedy Good Bridge, as part of implementing the Hutt River Floodplain Management Plan



Parks



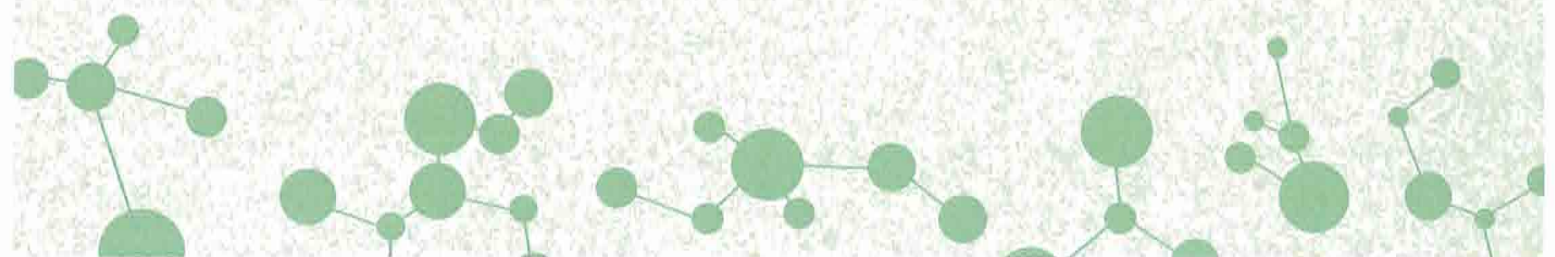
- complete the Parangarahu Lakes Management Plan jointly with the Port Nicolson Block Settlement Trust
- commence the MacKays Crossing entrance upgrade at Queen Elizabeth Park
- continue to develop visitor services at Baring Head, East Harbour Regional Park

Regional governance

The Wellington Region Local Government Review Panel published its report into structural reform in Wellington region in October 2012. This was an independent panel, commissioned by Greater Wellington Regional Council and Porirua City Council, and chaired by Sir Geoffrey Palmer. The Panel recommended that structural change was needed and that a new unitary council be created to cover the whole region, along with a second tier of 6 local area councils.

Subsequent to the Panel report, a working party, comprising representatives from Greater Wellington Regional Council, Porirua City Council, Kapiti District Council and Wellington City Council was formed to work up a preferred option in further detail. The working party will report back to each Council in early 2013, with a view to public consultation and then the development of an application to the Local Government Commission later in 2013.

This timetable could mean that a structural change to the Wellington local government arrangements could be in place on or before the date of the local body elections in 2016. While no longer compulsory, Regional Councillors expect a regionwide poll to be held before the Local Government Commission confirms a final proposal.



Key changes

from the Long Term Plan 2012-22

- The review of the Regional Public Transport Plan was scheduled for the 2012/13 financial year but has been delayed as the legislative requirements are in the process of being amended.
- The timing of capital expenditure for the electronic integrated ticketing project is now expected to occur from 2014-17, instead of 2013-16 as forecast in the Long Term Plan. This reflects delays in commencing the investigation phase, and the slower than expected completion of the Auckland integrated fares system project which will form the basis for our system.
- - The Long Term Plan provided for either refurbishment or replacement of the Ganz Mavag trains. In late 2012 Council made the decision to purchase more Matangi trains to replace the Ganz Mavag fleet. This will have about the same impact on regional fares and rates, but the new trains will provide much better value for money over their life.
- - The 2012/22 Long Term Plan indicated a water supply levy increase of 4% for the 2013/14 year. This figure has now been revised to a 3% increase. The change is driven by savings in operational expenditure.
- - \$250,000 has been allocated to support the development of the collaborative Whaitua Committee process. This will help support the Committees and to allow them to function effectively.
- - Completion of the Pinehaven and Waitohu Flood Management Plans will be delayed from 2012/13 to 2013/14 and the recommencement of the Mangaroa Flood Management Plan deferred until 2015/16. These have been slowed to focus resources on the renewal of the western area river maintenance consents and development of the Upper Wairarapa Valley Flood Management Plan.

Have your say

Proposed Resource Management Charging Policy (2013)

Greater Wellington has reviewed its Resource Management Charging Policy. This policy sets out a regime for resource management charges for the Wellington region including:

- Resource consent application charges
- Consent monitoring charges
- Charges for not complying with a rule in a regional plan or the Resource Management Act 1991
- Charges for providing information in relation to plans and resource consents
- Application charges for changing a plan or the Regional Policy Statement

The charges in the Policy are made either under section 36 of the Resource Management Act 1991 or section 150 of the Local Government Act 2002. The charges are consistent with Greater Wellington's Revenue and Financing Policy June 2006.

The review has resulted in some key proposed changes to the Policy including:

- Changes to our charge-out rate for providing resource management services. The current flat rate of \$110/hour will change to \$100/hour (administration services), \$115/hour (consent processing services) and \$130/hour (technical or science expert services).
- Changes to state of the environment monitoring charges for all consent types. Due to the potential significant increases, it is proposed to phase in charges over a four year period.
- Minor changes to some compliance monitoring charges to reflect changes brought about by central government regulations and current best practice

Proposed Parks Concession Guidelines

Greater Wellington has reviewed its Parks and Forests Concession Guidelines (Concession Guidelines). This policy sets out a regime for concessions charges for the Parks and Forests including:

- Rationale for charging fees
- Types of charges for permits, leases, licences and easements and how these are calculated
- Information about how fee waivers may apply
- Monitoring of concessions and bonds

The charges in the Concession Guidelines are made under Section 150 of the Local Government Act 2002, which allows local authorities to recover costs for concessions. The charges are consistent with Greater Wellington's Revenue and Financing Policy June 2006.

The review has resulted in some key changes to the Concession Guidelines including:

- Charges for processing leases, licences and easements
- More flexibility in charges for low impact filming
- Changes to the fee charges for camping and firewood permits

Full copies of these proposals can be viewed at www.gw.govt.nz/have-your-say, Greater Wellington Regional Council's Wellington or Masterton Office, or at your local library

How to have your say

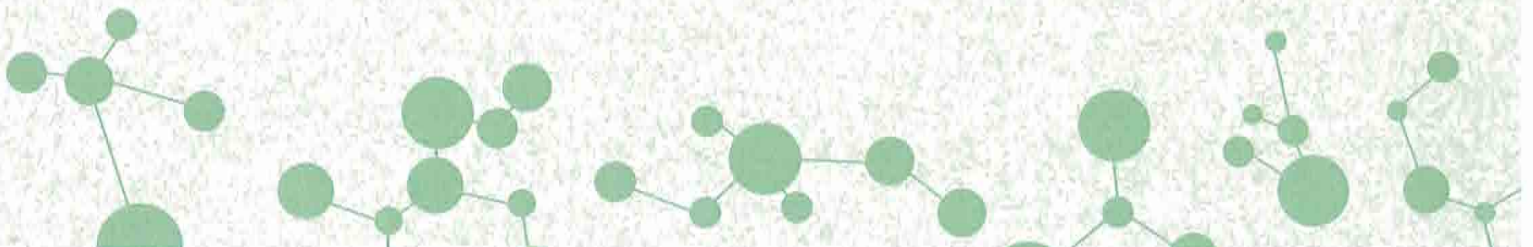
- **Visit our website** www.gw.govt.nz/have-your-say to view a copy of the full draft Annual Plan 2013/14, the Statement of Proposal for the Proposed Resource Management Charging Policy (2013) and the Proposed Parks Concession Policy,
- **Write a submission.** Use the submission form on p.13, send an online submission via our website or write a letter to us at Greater Wellington Regional Council, draft Annual Plan submissions 2013/14, Freepost 3156, PO Box 11646, Wellington 6142

The Council will hold hearings for any submitters who wish to speak.

Submissions are due by 4pm, Friday 26 April 2013

Copies of the full draft Annual Plan 2013/14, the Statement of Proposal for the Proposed Resource Management Charging Policy 2013 and the Proposed Parks Concession Guidelines are available from:

- www.gw.govt.nz/have-your-say
- Greater Wellington Regional Council offices – 142 Wakefield Street, Wellington and 34 Chapel Street, Masterton
- All libraries and local council offices
- Or by phoning Greater Wellington Regional Council – 0800 496 724



Proposed Resource Management Charging Policy (2013) Please give us your feedback on this proposed policy (see page 9)

Please tick if you want to present your views on the Proposed Resource Management Charging Policy in person to a hearing committee

Proposed Parks Concession Guidelines Please give us your feedback on this proposed policy (see page 9)

Please tick if you want to present your views on the Proposed Parks Concession Guidelines in person to a hearing committee

Fold here

YOUR REGIONAL COUNCILLORS

KAPITI Nigel Wilson T 04 905 0583, 021 284 3339 nigel.wilson@gw.govt.nz	PORIRUA-TAWA Jenny Brash T 04 233 8217, 027 354 4233 jenny.brash@gw.govt.nz Barbara Donaldson T/F 04 237 0773, 021 976 747 barbara.donaldson@gw.govt.nz	WELLINGTON Judith Aitken T 04 475 8969, 027 769 6424 judith.aitken@gw.govt.nz Paul Bruce T/F 04 972 8699, 021 027 19370 paul.bruce@gw.govt.nz Chris Laidlaw T 04 934 3143, F 04 934 3148 027 425 4668 chris.laidlaw@gw.govt.nz Daran Ponter T 04 475 9959, 027 454 0689 daran.ponter@gw.govt.nz	Fran Wilde, Chair T 04 830 4246 F 04 384 5023 021 888 075 fran.wilde@gw.govt.nz
LOWER HUTT Peter Glensor T 04 586 4119, 027 241 5152 peter.glensor@gw.govt.nz Sandra Greig T 04 586 0847, 027 640 8681 sandra.greig@gw.govt.nz Prue Lamason T 04 566 7283, F 04 566 2606 021 858 964 prue.lamason@gw.govt.nz	UPPER HUTT Paul Swain T 04 528 7830, 021 270 9113 paul.swain@gw.govt.nz WAIRARAPA Gary McPhee 027 457 5363 gary.mcphee@gw.govt.nz		

Fold here

FreePost Authority Number 3156



Greater Wellington Regional Council
Draft Annual Plan submissions 2013/14
Freepost 3156
PO Box 11646
Wellington 6142