

WHAITUA KĀPITI ADVISORY COMMITTEE MINUTES

The Whaitua Kāpiti Committee was convened for its ninth meeting at 9.30 A.M on September 20, 2023, at Ramaroa Centre, Whareroa (Known as QEP)

Committee members present:

Mana Whenua Whare	Facilitator	Kāwanatanga Whare
Dr. Aroha Spinks, Ngā Hapū o Ōtaki	Dr. Kathie Irwin (Kathie Irwin & Associates)	Jenny Rowan, Kāpiti Coast community representative
Caleb Royal, Ngā Hapū o Ōtaki		Jocelyn Prvanov, Kāpiti Coast District Councillor
Dr. Mahina-a-rangi Baker, Ātiawa ki Whakarongotai Charitable Trust		Kerry Walker, Kāpiti Coast community representative
Naomi Solomon, Ngāti Toa Rangatira		Monique Leith, Kāpiti Coast community representative
Sharlene Maoate-Davis, Ātiawa ki Whakarongotai Charitable Trust		Pātaka Moore, Kāpiti Coast community representative
Shane Parata, Ngāti Toa Rangatira		Penny Gaylor, Greater Wellington Regional Councillor

Kaimahi present:

Mana Whenua Whare	Role and responsibility
Aaria Dobson-Waitere (<i>online</i>)	Ātiawa ki Whakarongotai Charitable Trust kaimahi
Claire Gibb, Ātiawa ki Whakarongotai Charitable Trust	Co-ordinator
Jaida Howard (<i>online</i>)	Ngāti Toa Rangatira kaimahi
Torrey McDonnell, Contractor (Incite)	RMA Section 32 writer

Kāwanatanga Whare	Role and responsibility
Theressa Murray, TMS Transcriptions Services Ltd	Transcription for Monique
Chloë Nannestad, GWRC	Policy Advisor, Supporting policy development for WIP and plan change
Gina Anderson-Lister, KCDC	Strategy Manager
Helli Ward, GWRC	Senior Advisor Integration and Insights, western science co-ordination and communication.
Nicola Patrick, GWRC	Director Catchment, Presenting reflections on the Whaitua process and next steps.
Penny Fairbrother, GWRC	Senior Advisor Integration and Insights, western science co-ordination and communication, and technical lead on FMUs for this meeting.
Phill Barker, GWRC	Senior Catchment Advisor, Programme plan, delivery and capturing meeting actions
Rita O'Brien, KCDC	Stormwater & Coastal Engineer, KCDC lead on Whaitua Kāpiti project
Tim Stoddart (<i>online</i>), Contractor (Incite)	Senior Planner to advise on plan change aspects; support drafting RMA section 32 and plan provisions for Kāwanatanga whare
Simon Scott, KCDC	Senior Strategic Advisor for Strategy and Growth and has been tasked with developing an Environmental Strategy.
Whāia te kikorangi Caton, GWRC	Catchment Advisor, Meeting logistics and minutes

PROPOSED AGENDA (Set prior to this meeting)

9:00am – Gather at venue, tea, and coffee.

9:30 am – Start.

- 1) Karakia, Mihi and Welcome
- 2) Methods for Modelling feedback and decisions

10:45am Morning Tea (15 mins)

- 3) Finalising Freshwater Management Units (FMUs)
 - a. Kaimahi to present draft FMUs based on comparing the drafts and underlying principles of each whare, proposing integrations, and highlighting differences for the Tiriti whare.
 - b. Workshopping to develop and jointly determine a single set of spatial units as FMUs for the Natural Resources Plan (NRP) and organise information and decisions for the rest of the process.

12:30pm Lunch (30 mins)

- 4) Long-term Freshwater Vision(s)
 - a. Kāwanatanga Whare – Present on long-term freshwater vision drafted to the decision template, and the themes or ideas that inform it.
 - b. Mana Whenua Whare – Present on long-term freshwater visions drafted to the decision template, and the themes or ideas that inform it.
 - c. Workshopping through questions and feedback to develop long-term freshwater vision(s) for the Whaitua that meets the requirements of the NPS-FM.

3:00pm Afternoon tea (15 mins)

- 5) Items continued.
- 6) Next steps/ Agenda for next hui
- 7) Closing comments, recap key actions and agreements.

4:30pm – Finish and Depart

Notes:

- 1) The set time for individual Whare caucus and feedback time post-lunch has been removed from this agenda at the facilitator's suggestion. This allows staying together in wānanga-mode to progress the kōrero. This leaves the Caucus option open to be activated when appropriate to the point reached on the topic at hand.
- 2) Minutes and logistical administration will be circulated for approval following the meeting. The Taurite will notify edits or confirm approval of the minutes by email back to Kathie and Whāia. Approved minutes, reports and presentations will be uploaded to the Whaitua website and Committee SharePoint site.

ITEM 1 – INDIVIDUAL CAUCUS

A karakia was said at a pre-meeting between: Whaea Kathie, the two taurite, GWRC Catchment Director and GWRC Mana Whenua Partnership Director.

A change to the original agenda was introduced and accepted by the two Whare. The first item being an individual caucus time, to discuss a change to the work programme and GWRC's current constraints.

Minutes are not taken during caucus time.

The meeting broke for morning tea.

ITEM 2 – FINALISING FRESHWATER MANAGEMENT UNITS (FMUS)

A discussion took place between the committee members to further understand each other's FMU proposals.

Kāwanatanga Whare.

The Kāwanatanga Whare spoke to the advice received from GWRC and KCDC which helped inform their decision making. Fundamentally, they want to see change at every level and have a starting point of 9 FMUs. (*Appendix 1*)

Mana Whenua Whare.

The Mana Whenua Whare suggested to separate some catchments that the Kāwanatanga Whare committee have as one. Questioned how Kāpiti Island was included in the FMUs, and how this sits in the process with DoC's influence. (*Appendix 1*)

Proposed management units	
Mana Whenua	Kawanatanga
Waiorongomai	Waitohu
Waitawa	
Waitohu	
Ōtaki	Ōtaki
Mangaone	Mangaone
Kowhai	Kowhai (formerly Peka Peka)
Waimeha	Waimeha (formerly Ngārara)
Waikanae Upper	Waikanae
Waikanae Lower	
Tikotu*	Wharemauku
Wharemauku	
Whareroa	Whareroa
Wainui	Wainui & Paekākāriki
Paekākāriki*	
Kāpiti Island*	Kāpiti Island

*At the time this information was collated, Mana Whenua kaimahi still had outstanding discussions around Tikotu, Paekākāriki and Kāpiti Island meaning this may not be the final view of the Mana Whenua whare.

The Committee discussed GWRC's perspective for suggesting 1 FMU for the entire Kāpiti area. GWRC stated the primary reason for suggesting 1 FMU with multiple sub-FMUs, is that the reporting needs to be completed at an FMU level. The benefits to have 1 report with 9 chapters, instead of 9 reports, means reporting and accounting is more streamlined. GWRC stated that the previous Whaitua approaches have used 1 FMU with

various sub-FMUs and clarified that having 1 FMU does not limit the number of monitoring site per FMU. GWRC stated that it is not guaranteed that a multiple FMU approach would survive the Natural Resources Regional Plan Change process.

Committee members from both Whare did not agree with GWRC's recommendation. The Mana Whenua Whare stated they have an interest in seeing detailed reports, and that their approach is to look at the freshwater boundaries and units from that perspective, rather than based on council boundaries and ease. Compiling reporting across the board misses waterways and doesn't respect their mana, and this approach is not consistent with TMotW.

The Committee discussed the issues in each catchment, and the benefits of monitoring and action plans. They are working to make decisions on how to merge their separated FMUs to make a collective agreement.

Waitohu:

- Mana Whenua Whare stated their reasoning for combining the Waitohu: acknowledge that the upper catchment is the drinking supply, and the water flowing from the Tararua Range is primo.
- No activity in this area, which doesn't justify separating into two FMUs and a waste of resource to monitor.

Waiorongomai and Waitawa:

- Mana Whenua Whare stated their reasoning for separating the Waiorongomai and Waitawa: They are failing national bottom lines; the lakes are drying up; they are under monitored and have limited data.
- The lakes are surrounded by Māori land, and kaitiaki who live there will have increased responsibilities to adapt and change behaviour.
- They want reports to be focused on Waiorongomai, so there is real transparency and so they can track the improvement.
- Rational is that it needs to be a targeted approach to lift the actual quality.
- Waitawa requires different management, site of significance wahi tapū (shouldn't fish there). Tenuous hydro connection.

GWRC stated that there can still be 1 FMU and have set targets for the two lakes. Setting an FMU does not require monitoring the lake specifically, but setting target attribute states for the lake does require that the lake be monitored.

The Mana Whenua Whare stated that they want to have a conversation distinct to a catchment area, to bring an integrated level of community and Tangata whenua perspective. When Māori landowners are involved, the mana to do the work has to be recognised at that catchment level scale. The Waiorongomai is different hydrologically to Waitohu.

The Mana Whenua Whare discussed the idea of combining Waitawa and Waitohu FMUs and keep Waitawa as sub-FMU. Taking GWRC advice into consideration and making it 1 FMU, doesn't preclude setting targets and monitoring there.

Decision – The Committee agreed to the Waitohu as 1 FMU, with Waitawa as a sub-FMU.

Decision – The Committee agreed to the Waiorongomai as 1 FMU.

Waikanae upper and Lower:

Decision – Committee agreed on making Waikanae upper and lower catchments, to be joint as 1 FMU. Recognising they have the option to ensure more than 1 monitoring site and 1 mechanism is available to protect the drinking supply.

Kāpiti island:

- Noted that there is a governance entity in place partnered with ART. It wouldn't be sensible to do all this without putting back to that committee. There should be a package of information to let them know what we are proposing. From the Mana Whenua Whare, they recommendation this is 1 FMU.

Decision – The Committee agreed that Kāpiti Island is 1 FMU, subject to the governing body raising issues against this.

Tikotu:

- Mana Whenua Whare explained that this place has significance as Tauranga waka landing place at the mouth, that there is kai there, but the landscape has been highly modified.
- It receives a wastewater treatment plant, key management issues for Tikotu would be storm water management.
- Mana Whenua Whare stated their long-term view, thinking 30-50 years ahead. Not enough flow to keep the awa open, reclaiming and daylighting Tikotu to bring it close to its original mana.
- Differently function historically from Wharemauku, not much visibility in terms of stewardship, lacks shade and has weeds.

Decision – The Committee agreed to incorporate Tikotu as a sub-FMU of the Waikanae FMU.

Wainui and Paekākāriki:

- The Committee discuss the separate boundaries within both catchments.

Decision – The Committee agreed that Wainui and Paekākāriki are integrated to 1 FMU.

Tiriti Whare FMUs outcome	
FMUS	Sub-FMUs
Waitohu	Waitawa
Waiorongomai	
Waikanae	Tikotu
Waitohu	Waitawa
Wainui	
Ōtaki	
Mangaone	
Kowhai	
Waimeha	Paetawa, Kākāriki, Tōtara, Kawakahia, Ngarara
Wharemauku	
Whareroa	
Kāpiti Island*	

*Subject to the governing body raising issues against this.

The meeting broke for lunch.

Kathie welcomes the Committee back from lunch.

Rita introduced Simon and Gina from KCDC to the Committee. Both are new to council, and they work in the strategy and environment team. They are responsible for overarching strategic frame in place. Gina is strategy manager, and Simon is working on climate change resilient strategy. Simon is hoping to come to all the meetings and Gina will come in and out.

The Committee discussed their next set of decisions are setting the long-term visions for each of these FMUs. As a trial approach, they agreed to spilt into groups with even numbers of people from both Whare to make these decisions and come back to share with one another.

The purpose for reporting back was to raise alarm bells on the general visions, and kaimahi will re-write the visions if needed once they have captured the Committee's intent.

Group 1: Waiorongomai, Waitohu, and Mangaone.

Decision – The Committee agreed to the intention that was written for the long-term vision for Waiorongomai, Waitohu, and Mangaone.

The meeting broke for afternoon tea.

Group 2: Kōwhai, Waimeha (incl. all sub-FMUs), Waikanae (incl. Tikotu), and Wharemauku.

Kōwhai:

- Note for the kamahi when wordsmithing: the iwi connection is important to reference in the vision.

Waimeha:

- The group discussed the management population growth and climate change. Noted that these topics are a broader overarching across the entire Whaitua. This can be addressed in the wider/higher level vision and drop it down into the detailed policy work as they progress.

Tikotu:

- Noted that the original vision from Mana Whenua was retained.

Decision – The Committee agreed to the intention that was written for the long-term vision for Kōwhai, Waimeha (incl. tributaries Paetawa, Kākāriki, Tōtara, Kawakahia, Ngārara), Waikanae (incl. sub-FMU Tikotu), and Wharemauku.

Group 3: Whareroa, Wainui, and Kāpiti Island.

Whareroa:

- Noted that what was written was left as is and included the community visions. Text changed to more of a vision rather than a statement.
- Noted that Whareroa used to be wetlands.

Kāpiti Island:

- No vision was written.

Action – Shane to draft initial long-term vision for Kāpiti Island.

Action – Kaimahi from both Whare to finalise all long-term vision statements for each FMU wording together, cross check consistent use of language to read well and report back at the next Tiriti Whare hui.

ITEM 3 – WORK PROGRAM AND TIME FRAMES.

Mana Whenua Whare spoke to the work programme and time frames:

- Acknowledged that GWRC's capacity is constrained with the various Whaitua and Policy hearing processes. They re-affirmed the most important decisions for them are setting limits.
- Council raised the idea of requesting to shift the NPS-FM (2020) deadline; noted that the Mana Whenua Whare are opposed to this.
- They are re-evaluating their resources and questioned what their value is here. Based on GWRC stating that the Committee's recommendations may or may not be accepted by Council, they noted that the hearing panel are the final decision makers.
- Noted the uncertainty for the Mana Whenua Whare with who is able to participate after December.
- They suggested accelerating the work programme in order to get to key decisions (limit setting, rules) as soon as possible.
- The Mana Whenua Whare noted that one of the reasons they can move quicker than the Kāwanatanga Whare committee members, is because they are paid to do the research as well as come to the table.
- Mana Whenua Whare stated that whether it was a conscious decision or not, Mana Whenua and the community members have been disenfranchised in this conversation early on when the limits were not in scope for them to make decisions.

The Kāwanatanga Whare responded:

- In support of the Mana Whenua Whare's perspective.
- Requested guidance on what the priorities are before December, and also requested for papers within the next two weeks related to the proposed Natural Resources Plan Change.

- The Kāwanatanga Whare stated that after this process, if GWRC chooses 1 FMU instead of the recommended multiple FMUs from the committee, they want to know why.

Approaches to accelerating the work programme:

- The preliminary decisions, and resourcing/funding discussions are taking the committee's time away from the important decisions in phase 2 (limit setting, rules).
- The facilitation of these meetings will be chaired differently moving forward, no more going down rabbit holes, and a tighter agenda to be followed.
- The committee are supportive of accelerating the work programme in order to get to the key decisions.

Decision – The committee agreed to accelerating the work programme, completing the WIP and setting limited by December 2023.

- Mana Whenua Whare suggested the following approaches:
 - 1 of their committee members from each iwi are able to make decisions.
 - When reviewing, raising red flags, and moving on to avoid relitigating words.
 - Having 1 perspective to respond to from the Kāwanatanga Whare, i.e., the committee members.
 - Trial the 'break out group' concept to use time efficiently.
 - Kaimahi from both Whare to revise the work programme to analyse what is achievable and align with the agenda.
 - Not including additional meetings.
 - Prioritising outcomes or attributes and breaking down the steps to how limit setting is done.
 - Creating a culture of trust and confidence between the committee members.
- Kāwanatanga Whare suggested the following approaches:
 - To move quickly and accept things quickly requires a high level of trust. The Kāwanatanga Whare committee member's relationship with GWRC is critical to moving quickly.
 - The use of a timer or bell to keep on track.
 - GWRC stated that they want to know how to better support the committee members with connecting them back to their community.

Funding and resourcing:

- GWRC Catchment director spoke to the committee member's honorarium. Acknowledging the tension, it has caused because they choose to pay the committee via honorarium instead of paying by time. They cannot make promises as to what this means for the changing work programme. Noted that the Kāwanatanga Whare honorarium funding increase did not get backdated. It will be on the table for review in December.
- Mana Whenua Whare raised difficulties with this, stating that they have asked for the cost of GWRC's Scenario modelling report and were refused an answer. Due to lack of transparency, they question why they should accept GWRC's reason for limiting the Kāwanatanga committee members.
- GWRC Catchment director stated that moving forward, if the Mana Whenua Whare receives an unsatisfactory answer, to communicate with her directly.
- Mana Whenua Whare questions the acceleration and stretching of the work programme and acknowledge the work pressures put on GWRC kaimahi. Given the constraints, pressure, and commitment to a high trust relationship; there is the opportunity that Kāwanatanga Whare Committee members who have the skills can contribute here. They asked if there is the opportunity to bring resource across to support the Whare to review the technical needs and respond to some things. GWRC responded stating this resource is not something they can transfer. The constraints are separate to the committee's decision to work at pace, they acknowledge that the GWRC policy staff need to be more tightly connected and will address their constraints.

Next meeting: Wednesday 11 and Tuesday 12 October 2023.

Pātaka closed the hui with a karakia.

END OF DAY

CONFIRMED ACTION REGISTER

Note that all actions captured during the Committee meeting must be clearly stated as an action and providing instruction to minute taker to note down. If there is no clear instruction to capture an action, it will be included in the requests log/eddy.

Opened	Action	Update	Owner
05/04/23	GWRC kaimahi to produce a paper on respective roles and enforcement powers of GWRC and KCDC.	<p>June note:</p> <ul style="list-style-type: none"> In progress. 	GWRC kaimahi
05/04/23	GWRC kaimahi to produce and present a technical paper on the limit setting process, that addresses where allocation is at, and includes commentary from mana whenua for the right to use water.	<p>June note:</p> <ul style="list-style-type: none"> This information is available however it is proposed to be provided as part of the water allocation topic, rather than out of sequence. 	GWRC kaimahi
05/04/23	GWRC kaimahi to produce a glossary of 'policy jargon' and identify commonly used Māori terms, to support the committee's decision making.	<p>June note:</p> <ul style="list-style-type: none"> Draft prepared. However, definitions are in the NPS-FM itself. Proposed that jargon be explained as they arise through the process. 	GWRC kaimahi
05/04/23	GWRC kaimahi will follow up with members about remaining bios and photos for the GWRC website.	<p>June note:</p> <ul style="list-style-type: none"> Still waiting on a few bios and photos. 	GWRC kaimahi
10/05/23	GWRC kaimahi to report to the long-term plan (LTP) committee to understand the connection, start thinking about whitua implementation and to connect with KCDC's officers to support as well.	<p>June note:</p> <ul style="list-style-type: none"> In progress. 	GWRC kaimahi
21/06/23	GWRC kaimahi to seek approval for the Kāwanatanga Whare Committee members to be retained for the second phase of the Whitua Kāpiti process and for the Committee leading the process and writing the Section 32 report.	<p>July note:</p> <ul style="list-style-type: none"> In progress <p>August note:</p> <ul style="list-style-type: none"> This proposal has been put to GW senior management over the past few months. <u>Proposed next step</u>: Create a specific description on the scope of the Terms for Phase 2 with the Taurite as the basis for a paper that can go to 	GWRC kaimahi
21/06/23	GWRC kaimahi to report to what extent their organisation is progressing the rights and interests of iwi and Māori for freshwater in relation to mana whakahaere	<p>August note:</p> <ul style="list-style-type: none"> This request has gone forward to GWRC Te Hunga Whiriwhiri group, awaiting response. 	GWRC kaimahi
21/06/23	GWRC kaimahi to seek direction from the Kāwanatanga Whare on allocating or procuring resource for WIP and (RMA) Section 32 writing personnel.	<p>August note:</p> <ul style="list-style-type: none"> This action is underway with resourcing and contract arrangements still to be clarified for this to be finalised. 	GWRC kaimahi
21/06/23	GWRC kaimahi to seek direction from the Kāwanatanga Whare regarding the time commitment concerns and review the Terms of Reference for appropriate of resourcing together.	<p>August note:</p> <ul style="list-style-type: none"> This action is underway with GWRC senior management through Michele. 	GWRC kaimahi

21/06/23	GWRC kaimahi to seek direction from the Mana Whenua Whare on procurement for resourcing WIP, Section 32 writing personnel and support for caucus minutes.	<u>August note:</u> <ul style="list-style-type: none"> This action is underway with resourcing and contract arrangements still to be clarified for this to be finalised. 	GWRC kaimahi
21/06/23	GWRC kaimahi to investigate the use, information, and privacy management of TMS transcripts as a resource for (RMA) Section 32 and WIP reports and email the Committee prior to the July Tiriti Whare hui.	<u>August note:</u> <ul style="list-style-type: none"> Overdue. Legal and public information management advice has been received from the relevant advisors within GWRC. <u>Next step:</u> to summarise and put information management recommendations to be sent to the Taurite. 	GWRC kaimahi
09/08/23	GWRC to confirm how much the Scenario report cost and report back to the Committee.		GWRC kaimahi
09/08/23	GWRC to provide an update report at the next Whaitua hui on the resourcing issues.		GWRC kaimahi
09/08/23	To have a specific hui on modelling. People from both Whare can participate and bring a proposal to the table to determine an agreed method for a Tiriti Whare modelling exercise. They will report back from that meeting for the 20 September hui.	<u>Sept note:</u> <ul style="list-style-type: none"> Hui occurred the report back will follow at the October hui. 	GWRC kaimahi
09/08/23	Minor adjustments that were made through the TMotW principles statement workshop, to be finalised by Chloë and sent to Kathie and both Taurite to approve.		GWRC kaimahi
09/08/23	Mana Whenua Whare to share draft long-term visions with the Kāwanatanga Whare.		Mana Whenua Whare
21/08/23	Kaimahi from both Whare to collect the particular spatial units, noting each Committee suggestion and issues to highlight. Take the principals from both Whare to see where the points of divergence are and bring together these points, then propose decision to the September Tiriti Whare hui to consider.		Kaimahi from both Whare
21/08/23	GWRC to provide examples of non-regulatory interventions that have worked well in the Kāpiti region.		GWRC kaimahi
21/08/23	GWRC kaimahi to assess the flexibility of GWRC's state of environment monitoring network and investigate the financial implications associated with potential changes. Emphasis on addressing administrative elements such as freshwater accounting and formal reporting. Michele from GWRC will test and refine the narrative and understanding, and report back.		GWRC kaimahi
20/09/23	Shane to draft initial long-term vision for Kāpiti Island.		Shane
20/09/23	Kaimahi from both Whare to finalise all long-term vision statements for each FMU wording together, cross check consistent use of language to read well and report back at the next Tiriti Whare hui.		Kaimahi from both Whare

CLOSED ACTIONS AND REQUESTS

Opened	Action	Update	Owner	Status
21/06/23	GWRC kaimahi to seek information on the inclusion of Kāpiti Island in the Whaitua Committee's decisions and report to the Committee prior to July Tiriti Whare hui.	<u>August note:</u> This action has gone to GWRC Policy, initially regarding FMU considerations.	GWRC kaimahi	Proposed Closure 20/09/23
09/08/23	GWRC to provide the Kāwanatanga Whare committee with a work programme and list of products, with high level description of what is being prepared ahead of time.		GWRC kaimahi	
09/08/23	GWRC to provide the Kāwanatanga Whare Committee members with a list of staff engaged, which includes their roles and responsibilities.		GWRC kaimahi	
09/08/23	Michele to liaise with Penny Gaylor to determine how to get Council approval of additional funding between Council meetings.		GWRC kaimahi	
Opened	Request	Update	Owner	Status

REQUESTS LOG/EDDY

Note that all requests said during the Committee meeting by either of the Whare will be captured in this request log/eddy. If it was not clearly stated or instructed to be captured as an action, it will stay here until it is officially confirmed as an action.

Opened	Request	Update	Owner	Status
10/05/2023 1	GWRC kaimahi to provide information on the science behind consent water allocation, and how a consent is approved or declined. Requested from: Kāwanatanga Whare (item 2)			
10/05/2023 2	GWRC kaimahi to provide information on the possibility of the Consents team to start putting consent clauses on all new water take consent conditions, to link back to the outcomes of this whaitua process. Requested from: Mana Whenua Whare (item 2)			
10/05/2023 3	GWRC kaimahi to circulate to the Whaitua Kāpiti Committee the Whaitua Implementation 10-page report that was provided to their Environment Committee workshop in April.			

	Requested from: Kāwanatanga Whare (item 7)			
10/05/2023 4	GWRC, KCDC kaimahi and the Kāwanatanga Whare Committee members to share their perspective on identifying FMUs, their rationale behind it, the process and approach. Requested from: Mana Whenua Whare (item 7)	This information will be included in the presentations from the Kāwanatanga Whare on the FMU's topic	Kāwanatanga Whare presenters	
21/06/23 5	To have a better understanding of how consents on the Kāpiti coast are limited at low flows. Firstly, highlighting the minimum flow limits for each of the Kāpiti water management units in the Whaitua and schedule R (of GWRC proposed Natural Resources Plan). Secondly, to look at example conditions on consents for the following: 1. "Standard" low flow conditions on consents in the Kāpiti Whaitua (examples of takes from each of the management units for surface water, category A, and stream depleting category B). 2. Consents with non-standard low flow conditions, e.g. consents with a more restrictive low flow condition to mitigate effects Request from: Mana Whenua Whare (item 3)			
21/06/23 6	To have examples of previous WIP recommendations and the concrete provisions that came out of them in relation to specific decisions areas for this Committee. Request from: Mana Whenua Whare (item 4)			

DECISIONS LOG

Note that all decisions captured during the Committee meeting must be clearly stated as an action and providing instruction to minute taker to note down. If there is no clear instruction to capture a decision, it will be included in the requests log/eddy.

Opened	Decision	Update
05/04/23	Presentations to be shared in committee hui, are to be shared 1 week in advance, and slides are to be numbered.	
05/04/23	Minutes and agenda will be circulated in two weeks in advance of the next meeting.	
10/05/23	New people attending the Committee hui are to be introduced and welcomed, to establish relationships.	
10/05/23	Motion 1 – Accepting Mana Whenua Whare work programme.	
10/05/23	Motion 2 – the Kāwanatanga House representatives are retained for the second phase of the Whaitua Kāpiti process which will be resourced appropriately to recommend limits, action plans and other methods of the Whaitua Kāpiti process.	10/05/23 – The motion did not carry and was left open.
10/05/23	Motion 3 – Approval of the previous Whaitua Kāpiti Committee minutes from 5 April 2023.	
10/05/23	To recognise that decisions happening in the Tiriti House context, need to include Mana Whenua Whare. When there are decisions to be made for the process, they are going to be made at the Tiriti House.	
10/05/23	That anything brought to the Tiriti House must include the whakapapa (meaning the background and research about the idea) that comes with it.	
21/06/23	To the two outputs of the Whaitua Kāpiti. <ul style="list-style-type: none"> • A WIP recommendations document (1 plan) • An (RMA) Section 32 report (1 report) 	
21/06/23	To have a Kaupapa Māori model for report writing.	
21/06/23	To writing a joint report with two writers from each Whare.	
19/07/23	To consistently use the Terms of Reference language for describing the Mana Whenua House as such in the WIP.	
19/07/23	The Committee adopted the shared Te Mana o te Wai principles text as the final draft version (Box 1 in table of the WIP template). Waiata sung to mark the decision the Committee has made.	
19/07/23	To hold the Te Mana o te Wai expression text drafted at the 19 July hui, as internal work not to be shared externally until the end of the next meeting for further review and development by both Whare.	
21/08/23	The Kāwanatanga Whare Committee members confirmed to use the term: Western systems.	
21/08/23	Following changes made to the TMotW objective, the Committee agreed to adopt the two integrated TMotW objectives.	
21/08/23	The minutes are going to be dealt with at the Whare level and will not go back to the full committee. The taurite will sign off the minutes.	
20/09/23	The Committee agreed to the Waitohu as 1 FMU, with Waitawa as a sub-FMU.	
20/09/23	The Committee agreed to the Waiorongomai as 1 FMU.	

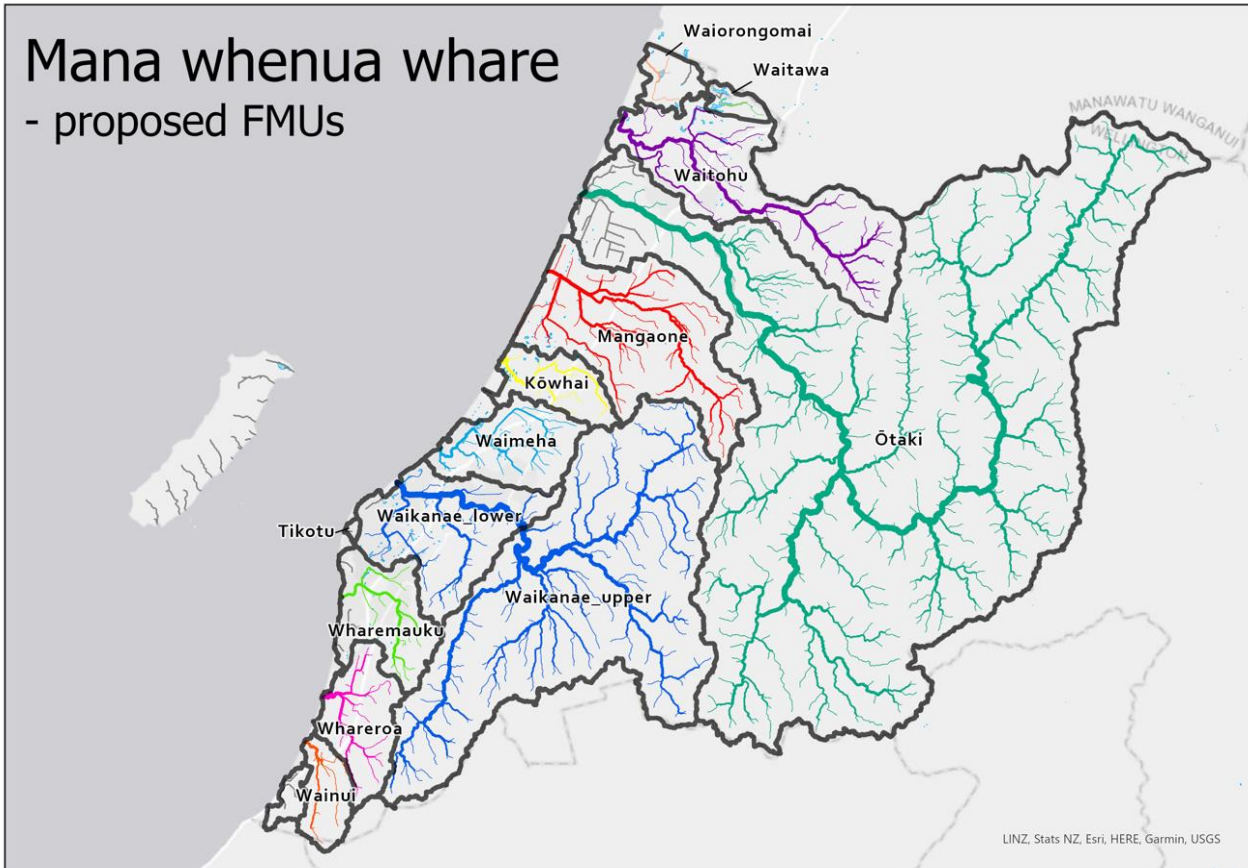
20/09/23	Committee agreed on making Waikanae upper and lower catchments, to be joint as 1 FMU. Recognising they have the option to ensure more than 1 monitoring site and 1 mechanism is available to protect the drinking supply.	
20/09/23	The Committee agreed that Kāpiti Island is 1 FMU, subject to the governing body raising issues against this.	
20/09/23	The Committee agreed to incorporate Tikotu as a sub-FMU of the Waikanae FMU.	
20/09/23	The Committee agreed that Wainui and Paekākāriki are integrated to 1 FMU.	
20/09/23	The Committee agreed to the intention that was written for the long-term vision for Waiorongomai, Waitohu, and Mangaone.	
20/09/23	The Committee agreed to the intention that was written for the long-term vision for Kōwhai, Waimeha (incl. sub-FMUs Paetawa, Kākāriki, Tōtara, Kawakahia, Ngarara), Waikanae (incl. sub-FMU Tikotu), and Wharemu.	
20/09/23	The committee agreed to accelerating the work programme, completing the WIP and setting limited by December 2023.	

Appendix

Appendix 1: (Item 2) Finalising Freshwater Management Units (FMUs)..... 14

Appendix 1: (Item 2) Finalising Freshwater Management Units (FMUs)

Mana Whenua Whare proposed FMU Map:



Kāwanatanga Whare proposed FMU Map:

